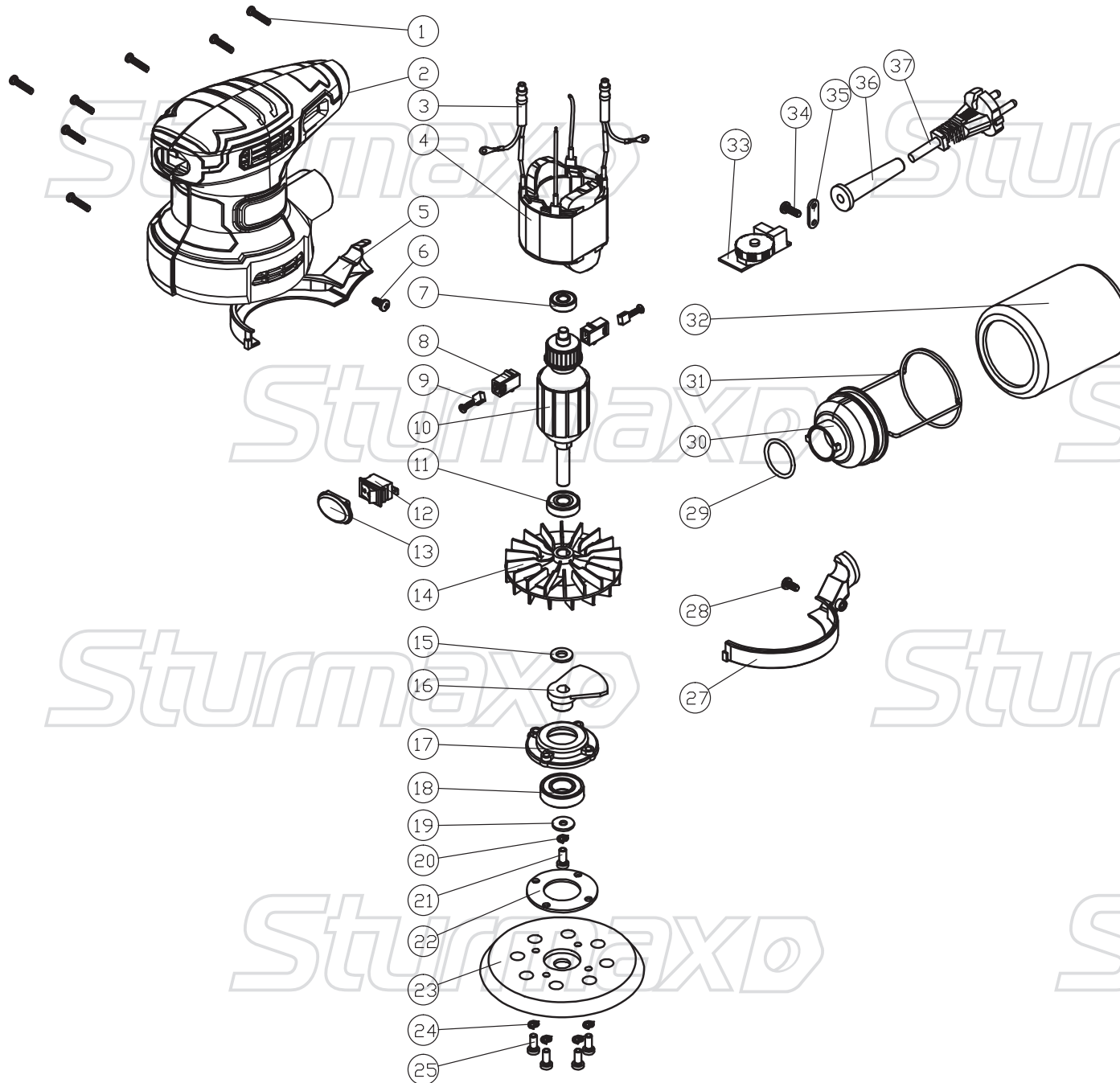


OSM8138R



NO.	DESCRIPTION
1	TAPPING SCREW ST3.9X17
2	HOUSING
3	INDUCTANCE
4	STATOR
5	RIGHT WIND GUIDE
6	TAPPING SCREW ST3.5X6
7	BEARING 607RS
8	BRUSH HOLDER
9	CARBON BRUSH
10	ROTOR
11	BEARING 609RS
12	SWITCH
13	SWITCH COVER
14	FAN
15	WASHER $\Phi 10 \times \Phi 16 \times \Phi 0.8$
16	BALANCE BLOCK
17	BEARING HOLDER
18	BEARING 6002RS
19	WASHER $\Phi 15.5 \times \Phi 16 \times \Phi 1.5$
20	SPRING WASHER $\Phi 5$
21	SCREW M5X16
22	PRESS BOARD
23	BASE
24	SPRING WASHER 5
25	SCREW M5
27	LEFT WIND GUIDER
28	TAPPING ST3.5X6
29	O-RING
30	DUST OUTLET
31	DUST BAG STEEL WIRE
32	DUST BAG
33	VARIABLE SPEED
34	TAPPING ST3.9X12
35	CABLE CLAMP
36	CABLE SLEEVE
37	CABLE