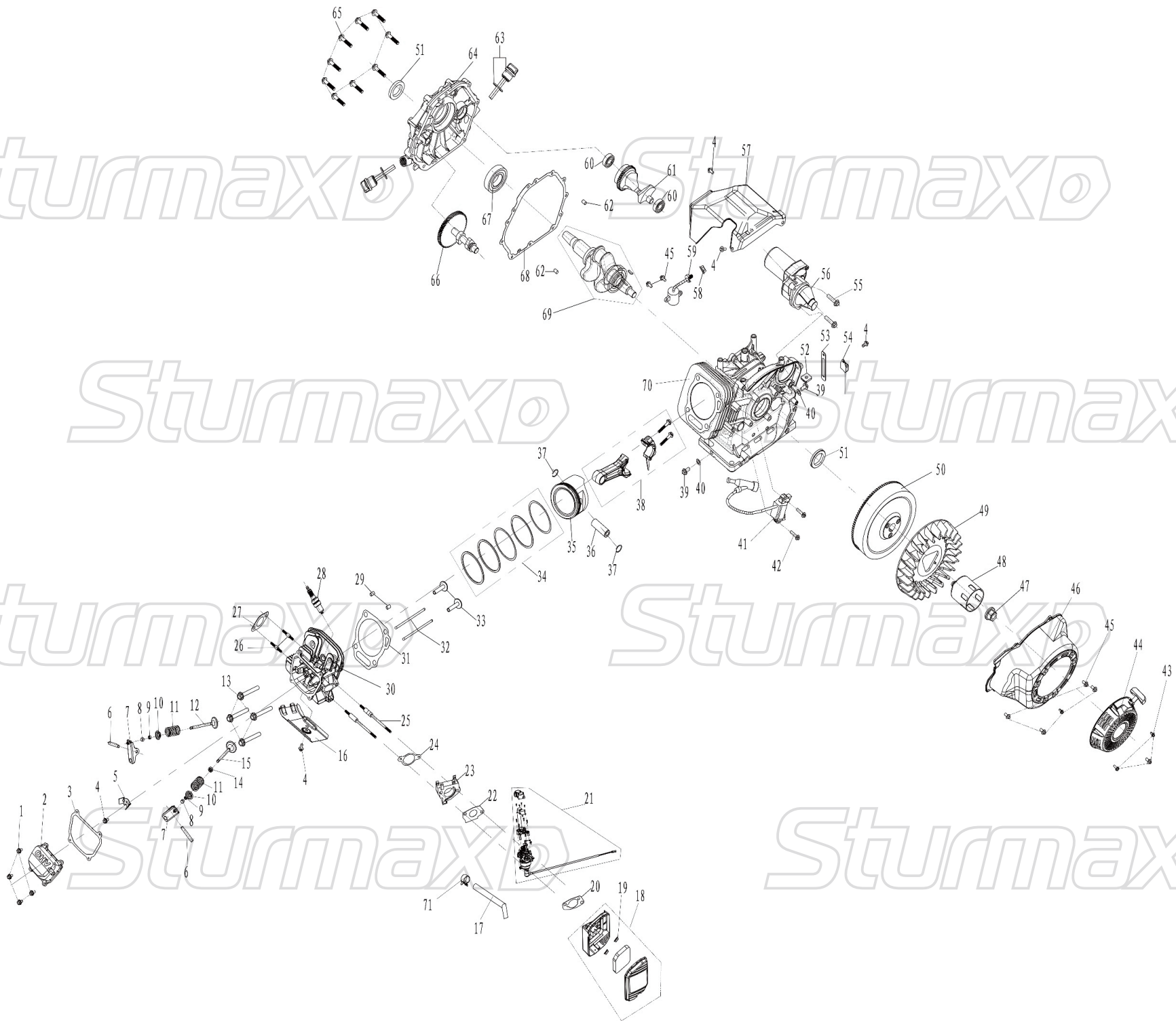


Sturmaxo

Sturmaxo

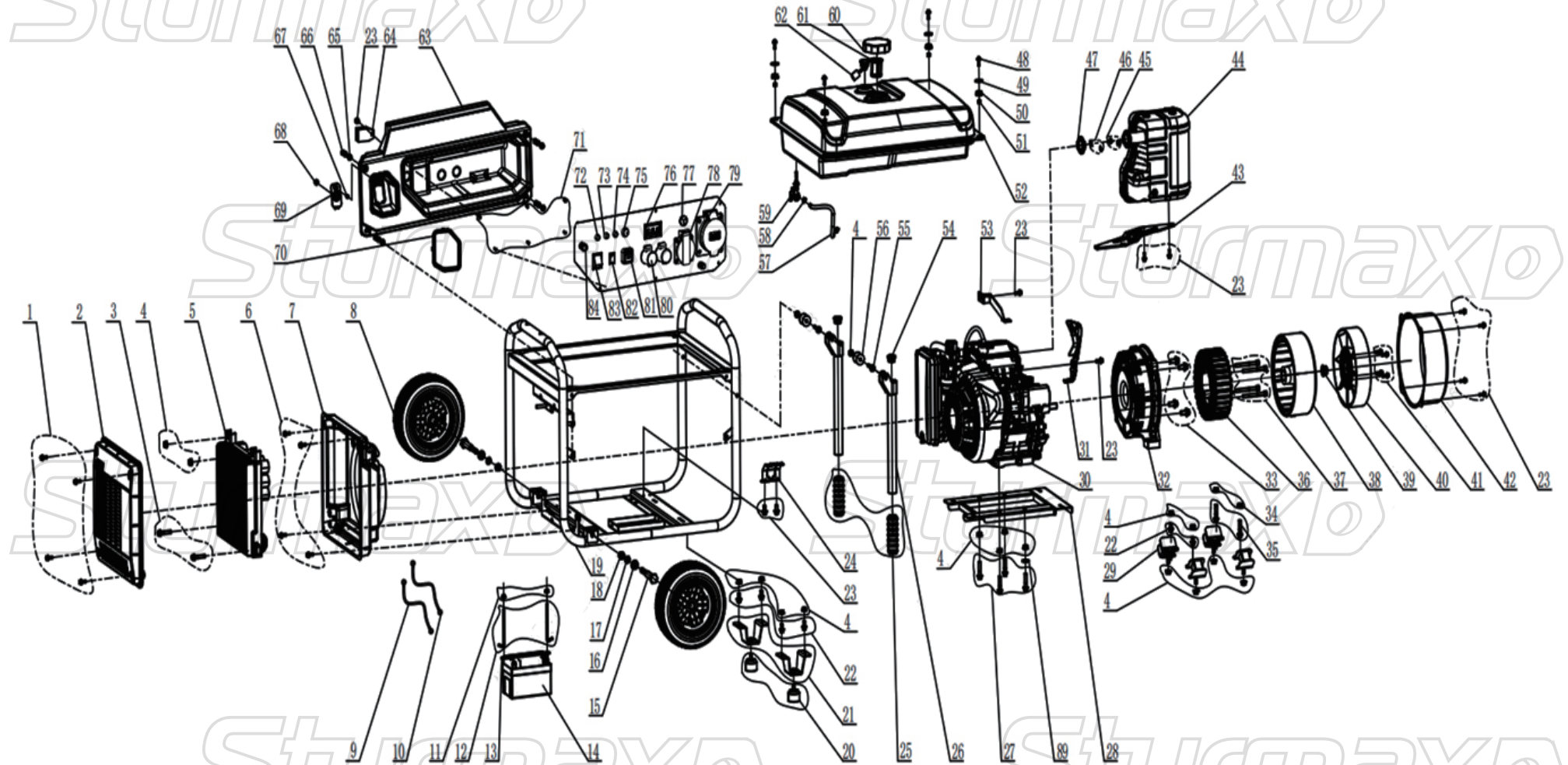
Sturmaxo

Sturmaxo



Sturmaxo

Sturmaxo



Sturmaxo

Sturmaxo

ENGINE FOR PGM87110IE

NO.	DESCRIPTION	NO.	DESCRIPTION
1	BOLT	37	PISTON PIN CLIP
2	CYLINDER HEAD COVER ASSEMBLY	38	CONNECTING ROD
3	CYLINDER HEAD COVER GASKET	39	OIL DRAIN BOLT
4	BOLT	40	OIL DRAIN BOLT GASKET
5	ROCKER ARM SHAFT STOPPER	41	IGNITION MODULE ASSEMBLY
6	ROCKER ARM PIN	42	BOLT
7	ROCKER ARM ASSEMBLY	43	BOLT
8	TOP CAP	44	ENGINE RECOIL STARTER ASSEMBLY
9	VALVE LOCK	45	BOLT
10	VALVE SPRING RETAINER	46	FAN COVER
11	VALVE SPRING	47	LOCK NUT
12	EXHAUST VALVE	48	RECOIL STARTER PULLEY
13	BOLT	49	COOLING FAN
14	VALVE STEM SEAL	50	ELECTRIC START FLYWHEEL
15	INTAKE VALVE	51	OIL SEAL
16	LOWER AIR GUIDE PLATE	52	CRANKCASE RUBBER RING
17	BREATHER HOSE	53	WIRE CLAMP NO.1
18	AIR CLEANER	54	ISOLATOR
19	LOCK NUT	55	BOLT
20	AIR FILTER GASKET	56	STARTER MOTOR
21	CARBURETOR	57	GOVERNOR BRACKET
22	HEAT INSULATOR GASKET	58	NUT
23	CARBURETOR HEAT INSULATOR	59	OIL ALARM
24	INTAKE PORT GASKET	60	BEARING
25	STUD BOLT	61	BALANCE SHAFT
26	STUD BOLT	62	DOWEL PIN
27	EXHAUST PIPE GASKET	63	OIL DIPSTICK
28	SPARK PLUG F7RTC	64	LOWER COVER
29	DOWEL PIN	65	BOLT
30	CYLINDER HEAD	66	CAMSHAFT ASSEMBLY
31	CYLINDER HEAD GASKET	67	BEARING
32	PUSH ROD	68	CRANKCASE GASKET
33	TAPPET	69	CRANKSHAFT ASSEMBLY
34	PISTON RING	70	CRANKCASE
35	PISTON	71	CLAMP
36	PISTON PIN		

PGM87110IE-EX-UK251218PG

PGM87110IE

NO.	DESCRIPTION	NO.	DESCRIPTION
1	BOLT	43	MUFFLER SUPPORT PLATE
2	MODULE FRONT COVER	44	MUFFLER ASSEMBLY
3	BOLT	45	LOCK NUT
4	LOCK NUT	46	SPRING WASHER - MEDIUM DH
5	INVERTER MODULE ASSEMBLY YP	47	EXHAUST PIPE GASKET
6	BOLT	48	BOLT
7	MODULE REAR COVER	49	FLAT WASHER
8	PU FOAM WHEEL HF	50	FUEL TANK GASKET HD
9	STARTER MOTOR WIRE	51	FUEL TANK PIN HD
10	STARTER MOTOR WIRE	52	FUEL TANK
11	LOCK NUT	53	AIR FILTER BRACKET
12	BATTERY HOOK	54	TUBE PLUG
13	BATTERY HOLD-DOWN BLOCK	55	BOLT
14	BATTERY	56	NYLON WASHER
15	AXLE AL	57	FUEL HOSE
16	FLAT WASHER DH	58	HOSE CLAMP FD
17	SPRING WASHER - MEDIUM DH	59	FUEL TANK VALVE ASSEMBLY
18	NUT	60	FUEL TANK CAP ZF
19	FRAME	61	FUEL FILTER
20	FRAME FOOT HD	62	OIL LEVEL INDICATOR (ROUND)
21	SUPPORT FOOT	63	PANEL
22	BOLT	64	CHARGING MODULE
23	BOLT	65	BOLT
24	DAMPING MOUNT HEAT SHIELD	66	FUEL TANK PIN HD
25	HANDLE GRIP	67	SCREW
26	HANDLE	68	NUT
27	BOLT	69	RECOIL STARTER ROPE GUARD
28	BRACKET BASE PLATE	70	DECORATIVE STRIP
29	DAMPING FOOT	71	SCREW
30	ENGINE	72	OIL INDICATOR LIGHT
31	CYLINDER HEAD AIR GUIDE COVER	73	OUTPUT INDICATOR LIGHT
32	MOTOR ADAPTER PLATE	74	FAULT INDICATOR LIGHT
33	BOLT	75	RESET SWITCH
34	BOLT	76	AC 3-IN-1 DIGITAL METER
35	LOCK NUT	77	PROTECTOR
36	STATOR ASSEMBLY	78	SOCKET
37	SCREW	79	SOCKET
38	ROTOR	80	TERMINAL BLOCK(BLACK + RED)
39	LOCK NUT	81	USB
40	MOTOR COOLING FAN	82	SWITCH
41	BOLT	83	ELECTRIC START SWITCH PA
42	MOTOR OUTER COVER	84	CHOKE CABLE