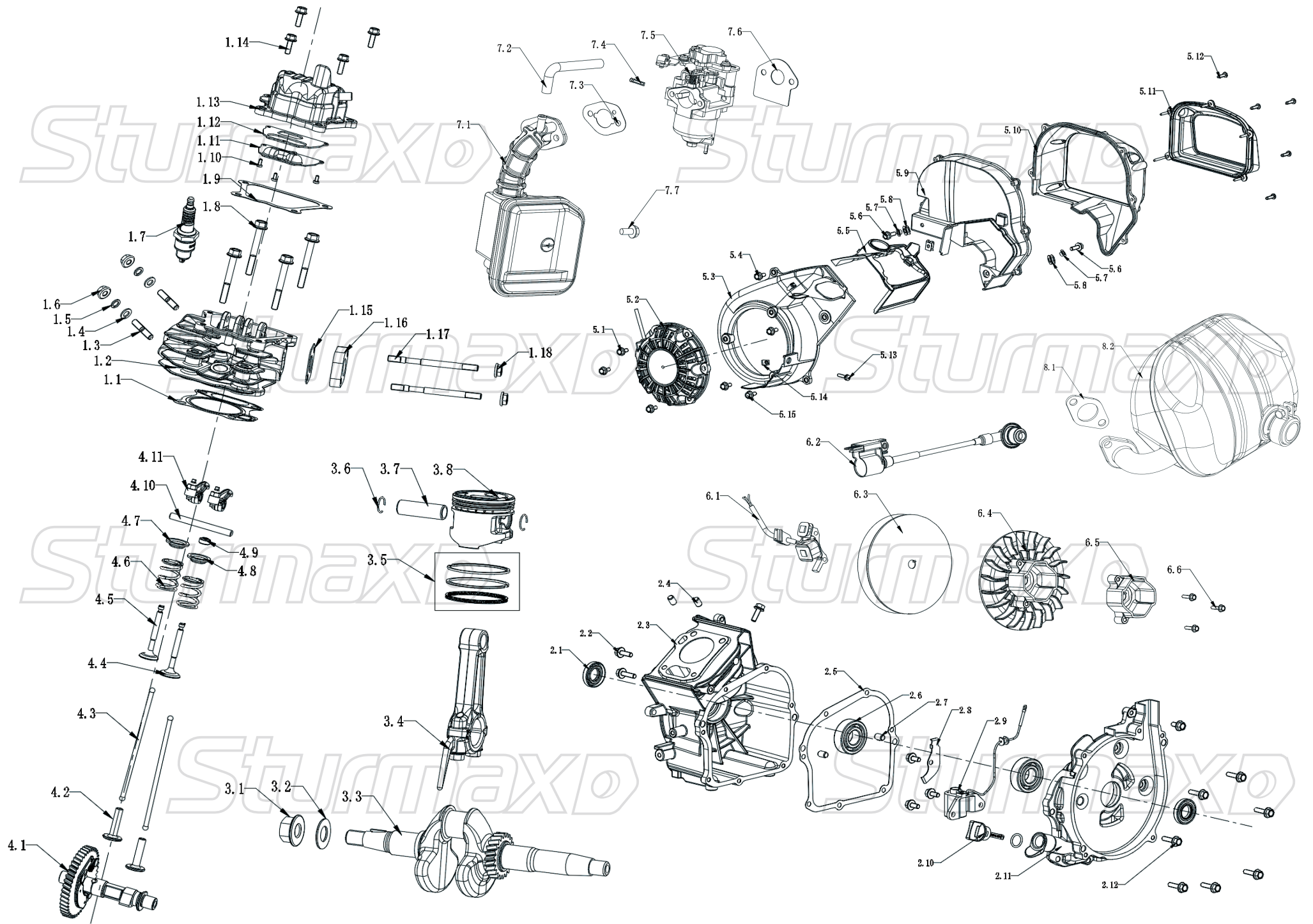


PGM8720I

NO	DESCRIPTION	NO	DESCRIPTION	NO	DESCRIPTION
1.1	DECORATIVE COVER-RECOIL START HANDLE	3.10	SHOCK PAD, BIG	6.1	OIL LEVEL INDICATOR
1.2	RECOIL START HANDLE	3.11	BOLT M6*12	6.2	FUEL TANK CAP
1.3	DAM-BOARD, RECOIL STARTER	3.12	SHOCK PAD, SMALL	6.3	FUEL FILTER
1.4	DECORATIVE COVER-SWITCH	4.1	SCREW ST4.8*13F	6.4	SHOCK PAD
1.5	SCREW GB/T823 4*16	4.2	3IN1 SWITCH	6.5	FUEL TANK
1.6	ON-OFF SWITCH KNOB	4.3	CLIP FOR FUEL TUBE, Φ9	6.6	S-TYPE CARB FUEL TUBE, Φ5*10
1.7	LEFT COVER	4.4	CARB FUEL TUBE	6.7	FUEL TUBE CLIP, Φ9
1.8	SCREW ST4.2*10	4.5	CLIP, Φ10	6.8	CLIP FOR FUEL TUBE, Φ11
1.9	BOLT M6*18	4.6	THROTTLE CORD, Φ5*220MM	6.9	FUEL FILTER TIP
1.10	LEFT FRAME	4.7	RETURN SPRING FOR THROTTLE CORD	7.1	END COVER PLUG
1.11	NUT 18*13-M5	4.8	SUPPORT FOR INVERTER MODULE	7.2	BOLT M6*30
1.12	CUSHION RUBBER FOR ENGINE	4.9	BOLT M5*20	7.3	BOLT M6*35
1.13	SCREW GB/T845 ST4.8*13F	4.10	FULL BRIDGE	7.4	END COVER
2.1	BOLT M6*18	4.11	LOCK NUT M5	7.5	LOCATING PIN
2.2	FIXED LOOPS, MAINTAINENCE COVER	4.12	RUBBER RING	7.6	STATOR ASSY
2.3	CUSHION RUBBER FOR ENGINE	4.13	SUPPORT FOR INVERTER MODULE	7.7	SCREW M5*35
2.4	NUT 18*13-M5	4.14	BOLT M6*12	7.8	NUT M12*1.25
2.5	RIGHT FRAME	5.1	SCREW M5*12	7.9	ROTOR ASSY
2.6	BOLT M6*20	5.2	MUFFLER PROTECTIVE GUARD	7.10	FAN
2.7	MAINTAINENCE COVER, SPARK PLUG	5.3	AIR GUIDE RUBBER SLEEVE FOR MOTOR	7.11	BOLT M6*16
2.8	OIL GUAGE LENSE	5.4	CLOSING RING 5*14	7.12	ENGINE ASSY JF148FE
2.9	FUEL TANK CAP LOOPING	5.5	PANEL BASE	7.13	INVERTER MODULE
2.10	MAINTAINANCE COVER	5.6	DC CIRCUIT BREAKER	7.14	BOLT M6*12
2.11	SCREW M6*12	5.7	DC SOCKET	7.15	BOLT M6*8
2.12	OIL FILLER MAINTAINENCE COVER	5.9	NUT M6		
2.13	BOLT M6*12	5.10	SPRING WASHER Φ6		
3.1	BOLT M6*22	5.11	FLAT WASHER GB/T97.1 Φ6*12*0.9		
3.2	FLAT WASHER GB/T96.1 Φ6*18*1.0	5.12	BOLT M6*18		
3.3	RUBBER FOOT	5.13	SOCKET		
3.4	PIN FOR RUBBER FOOT	5.14	ECON SWITCH		
3.5	NUT M6	5.15	SCREW GB/T845 ST3.5*13F		
3.6	SQUARE NUT M6*16*6	5.16	FAULT INDICATOR		
3.7	BASEBOARD	5.17	OUTPUT INDICATOR		
3.8	NUT 18*13-M5	5.18	OIL INDICATOR		
3.9	SHOCK DAMPING FOOT	5.19	PANEL		

PGM8720I-EX-UKW231113PG



ENGINE FOR PGM8720I

NO	DESCRIPTION	NO	DESCRIPTION
1.1	CYLINDER HEAD GASKET	4.3	PUSH ROD
1.2	CYLINDER HEAD	4.4	EXHAUST VALVE
1.3	DOUBLE END BOLT	4.5	INLET VALVE
1.4	FLAT WASHER $\Phi 6$	4.6	VALVE SPRING
1.5	SPRING WASHER $\Phi 6$	4.7	INLET VALVE SPRING SEAT
1.6	NUT M6	4.8	EXHAUST VALVE SPRING SEAT
1.7	SPARK PLUG	4.9	TOP CAP
1.8	BOLT M6*50	4.10	ROCKSHAFT
1.9	CYLINDER HEAD COVER GASKET	4.11	ROCK ARM
1.10	SCREW M4*8	5.1	BOLT M6*14
1.11	CYLINDER HEAD COVER SEPARATOR	5.2	RECOIL STARTER ASSY
1.12	CYLINDER HEAD COVER SEPARATOR GASKET	5.3	FAN COVER
1.13	CYLINDER HEAD COVER	5.4	BOLT M6*14
1.14	BOLT M6*18	5.5	AIR DIRECTOR
1.15	AIR INLET PAPER PAD	5.6	BOLT M6*16
1.16	CARBURETOR HEAT INSULATOR	5.7	RUBBER GASKET
1.17	DOUBLE END BOLT	5.8	CLIP NUT
1.18	BOLT M6	5.9	AIR DIRECTOR I FOR MUFFLER
2.1	OIL SEAL $\Phi 20 \times \Phi 35 \times 5$	5.10	AIR DIRECTOR II FOR MUFFLER
2.2	BOLT M6*20	5.11	AIR OUTLET SHEATH
2.3	CRANKCASE	5.12	SCREW ST4.8*16
2.4	LOCATING PIN	5.13	BOLT
2.5	CRANKCASE GASKET	5.14	CLIP NUT
2.6	BEARING 6204/P53	5.15	BOLT
2.7	LOCATING PIN	6.1	CHARGING COIL
2.8	ADAPTING PLATE	6.2	IGNITION COIL
2.9	OIL ALARMER	6.3	FLYWHEEL
2.10	OIL GAUGE	6.4	FAN
2.11	SIDE COVER	6.5	STARTING DRUM
2.12	BOLT M6*20	6.6	BOLT
3.1	BOLT M12	7.1	AIR FILTER ASSY
3.2	FLAT WASHER $\Phi 12.5 \times \Phi 24 \times 2$	7.2	EXHAUST TUBE
3.3	CRANKSHAFT	7.3	AIR FILTER ELEMENT
3.4	CONNECTING ROD	7.4	NOZZLE SCREEN
3.5	PISTON RING	7.5	CARBURETOR
3.6	PISTON PIN CLIP	7.6	HEAT INSULATOR GASKET
3.7	PISTON PIN	7.7	BOLT
3.8	PISTON	8.1	MUFFLER GASKET
4.1	CAMSHAFT	8.2	MUFFLER ASSY
4.2	VALVE TAPPET		