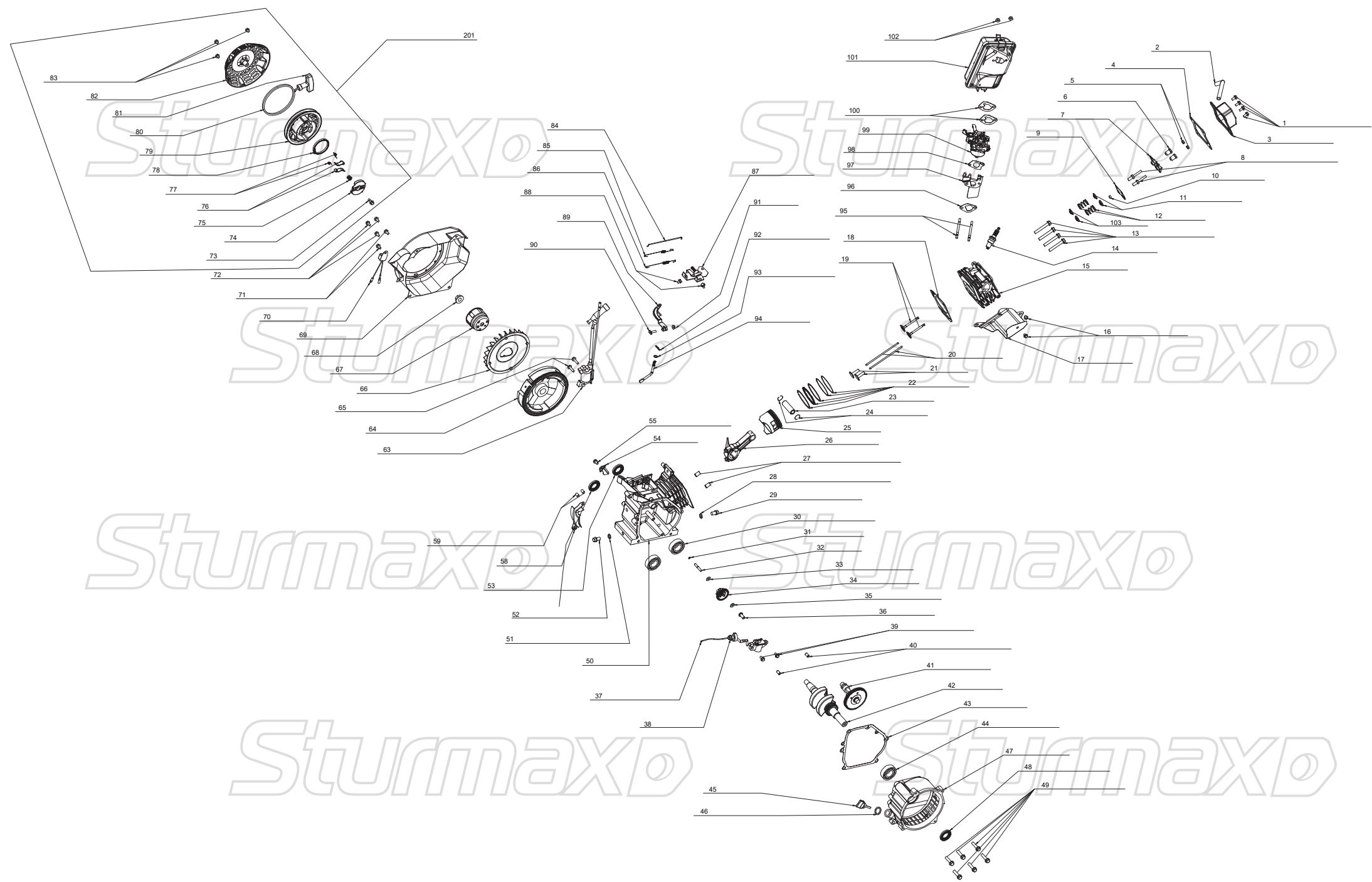


PGM8730N

NO.	DESCRIPTION	NO.	DESCRIPTION
1	FUEL TANK COVER	37	HEX. FLANGE BOLT
2	FUEL TANK SEAL	38	FLAT WAHSER
3	FILTER SCREEN	39	HEX. FLANGE BOLT
4	FUEL GAUGE (INDICATOR)	40	BACK COVER
5	HEX. FLANGE BOLT	41	HEX. FLANGE BOLT
6	FLAT WASHER	42	HEX. FLANGE BOLT
7	BUSH	43	COLLAPSIBLE BEAM
8	FUEL TANK CUSHION	44	FLANGE BOLT
9	FUEL TANK	45	SWITCH
10	FUEL TANK SWITCH FILTER SCREEN	46	POWER INDICATOR
11	FUEL TANK SWITCH SEAL	47	LOW OIL ALERT LIGHT
12	NUT	49N	VOLTMETER
13	FUEL TANK SWITCH ASSEMBLY	50	BREAKER
14	FUEL PIPE CLAMP	52	DC PROTECTOR
15	FUEL PIPE	53N	TERMINAL
16N	FLAME	54	EURO STYLE SOCKET
17	ENGINE	55	NUT
18	AIR FILTER BRACKET	56	SPRING WASHER
19	HEX. FLANGE BOLT	57	FLAT WAHSER
20	MUFFLER SEAL	58	HEX. FLANGE BOLT
21	MUFFLER ASSEMBLY	59N	PANEL
22	SPRING WASHER	60	BOLT
23	HEX. FLANGE BOLT	62	PANEL REAR COVER
24	HEX. FLANGE BOLT	63	CORD SHEATH
25	MUFFLER GUARD	64	NUT
26	HEX. FLANGE BOLT	65	SMALL CUSHION PAD
27	MUFFLER SUPPORT BRACKET	66	FLAT WAHSER
28A	ROTOR	67	SPRING WASHER
29A	STATOR WINDING	68	BIG CUSHION PAD
30	MOTOR REAR COVER	69	FLAME STAND
31	RECTIFIER	70	FLAT WAHSER
32	HEX. FLANGE BOLT	71	NUT
33	CARBON BRUSH ASSEMBLY	72N	GUARD BOARD
34	CONNECTION BLOCK	73N	GUARD BOARD
35	HEX. FLANGE BOLT		
36	AVR		

PGM8730N-EX-UKW231103PG



ENGINE FOR PGM8730N

NO.	DESCRIPTION	NO.	DESCRIPTION
1	HEX. FLANGE BOLT	51	OIL DRAIN BOLT WASHER
2	RIGHT-ANGLE WASTE PIPE	52	OIL DRAIN BOLT
3	CYLINDER HEAD COMP	53	OIL SEAL
4	CYLINDER HEAD SEAL	54	PRESSURE BOARD
5	VALVE CLEARANCE ADJUSTING NUT	55	HEX. FLANGE BOLT
6	VALVE ARM NUT	58	FLY WHEEL GUARD
7	VALVE ARM	59	MOTOR ASSY POSITION PIN
8	BOLT	63	IGNITION COIL ASSY
9	LEVER BRACKET	64	FLY WHEEL WITH GEAR
10	VALVE HEAD CAP	65	HEX. FLANGE BOLT
11	VALVE SPRING BASE	66	FAN
12	VALVE SPRING	67	START COVER
13	BOLT	68	NUT
14	SPARK PLUG	69	FAN COVER
15	CYLINDER HEAD	70	ONE-WAY CONDUCTOR ASSY
16	HEX. FLANGE BOLT	71	HEX. FLANGE BOLT
17	DOWN WINDING GUARD	72	HEX. FLANGE BOLT
18	CYLINDER HEAD SEAL GASKET	73	PRESSURE BOARD SCREW
19	INTAKE AND EXHAUST VALVE	74	PRESSURE BOARD
20	LEVER ASSEMBLY	75	PRESSURE BOARD SPRING
21	LITER	76	RATCHET
22	PISTON RING ASSY	77	RATCHET SPRING
23	PISTON PIN	78	SPRING
24	PISTON PIN CIRCLIP	79	RECOIL STARTER REEL
25	PISTON	80	PULLING CORD
26	CONNECTION ROD ASSY	81	HANDLE
27	VALVE HEAD POSITION PIN	82	REEL COVER
28	OIL DRAIN BOLT WASHER	83	HEX. FLANGE BOLT
29	OIL DRAIN BOLT	84	GOVERNOR ROD
30	DEEP GROOVE BALLING BEARING 6205	85	TRIMMING SPEED SPRING
31	CIRCLIP FOR SPEED ADJUSTING SHAFT	86	RESET SPRING
32	SPEED ADJUSTING SHAFT	87	GOVERNOR BASE ASSY
33	WASHER	88	HEX. FLANGE BOLT
34	SPEED GEAR ASSY	89	GOVERNOR ARM
35	WASHER	90	T-SHAPED BOLT
36	SPEED ADJUSTING SHAFT BUSH	91	NUT
37	OIL SENSOR ASSY	92	GOVERNOR ROD PIN CLAMP
38	NUT	93	WASHER
39	HEX. FLANGE BOLT	94	GOVERNOR ROD CLAMP
40	CRANKCASE POSITION PIN	95	STUD BOLT
41	CAMSHAFT ASSY	96	INTAKE WASHER
42	CRANK ASSY	97	CARBURETOR HEAT INSULATOR
43	CRANKCASE PAPER WASHER	98	(OUT)CARBURETOR WASHER
44	DEEP GROOVE BALLING BEARING 6205	99	CARBURETOR ASSEMBLY
45	OIL LEVEL CAP ASSEMBLY	100	(IN)CARBURETOR WASHER
46	OIL LEVEL SEAL	101	AIR FILTER ASSEMBLY
47	CRANKCASE HIGH COVER	102	NUT
48	OIL SEAL	103	VALVE OIL SEAL
49	HEX. FLANGE BOLT	201	RECOIL STARTER
50	CRANKCASE		