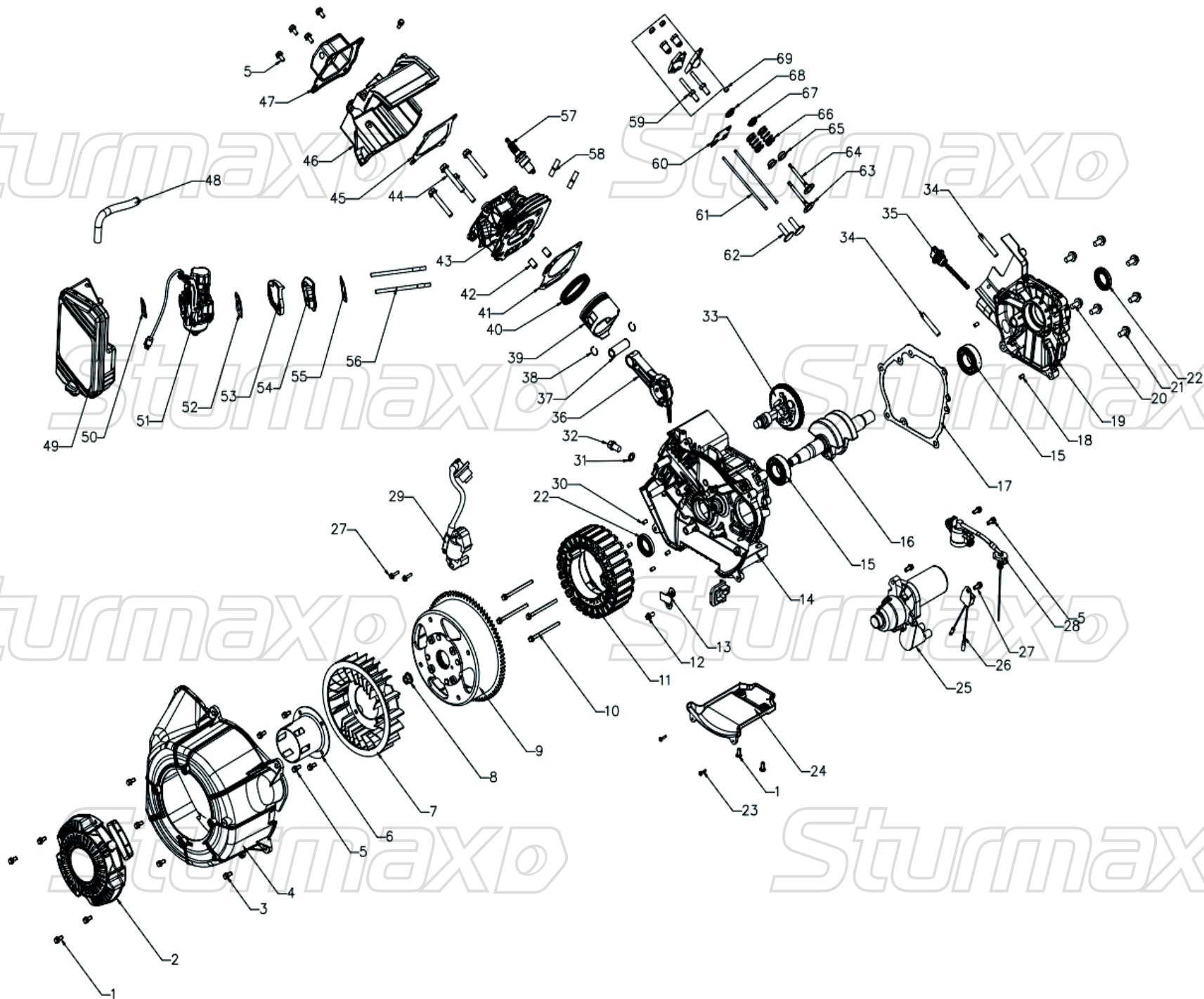


PGM8738IE

NO	DESCRIPTION	NO	DESCRIPTION	NO	DESCRIPTION
1	ENGINE	37	NUT M5 18*13	77	LEFT FRAME
2	FRONT HOUSING	38	NUT M6 16*6	78	RETURN SPRING 25-30MM
3	BOLT	39	SHOCK PAD (SMALL)	79	THROTTLE WIRE Φ1.2*396
4	BOLT M6*12	40	SHOCK PAD BIG(BIG)	80	PANEL ASSEMBLY
5	FLAT KEY 5*5*18	42	BRAKE	80-1	KNOB CAP
6	GASKET (MUFFLER)	43	BRAKE DISC	80-2	BOLT 4*16
7	SPRING WASHER Φ8	44	FRAME ASSEMBLY	80-3	OIL SWITCH KNOB
8	NUT M8	45	FULL BRIDGE	80-4	EUROPEAN SOCKET 16A
9	MUFFLER	46	PRESSING PLATE		VOLTMETER
10	SHIELD (MUFFLER)	47	BOLT M5*20	80-5	OIL INDICATOR LIGHT
11	CHECK RING 5*14	48	HANDLE BRACKET		OUTPUT INDICATOR LIGHT
12	SEAL PLATE	49	PIPELINE CLIP Φ9		FAULT INDICATOR LIGHT
13	REAR COVER	50	PIPELINE Φ5*10	80-6	SWITCH
14	BOLT M5*12	51	BACK HANDLE	80-7	WATERPROOF CAP
15	BOLT M8*12	52	PIPE LINE	80-8	STARTING SWITCH
16	CABLE HARNESS	53	CLIP Φ11	80-9	PROTECTOR
17	BOLT M8*25	54	FUEL FILTER	80-10	SOCKET
18	ALUMINUM FAN	55	FUEL TANK	80-11	BOLT Φ7 ST3.5*13F
19	BOLT M6*16	56	FUEL TANK GASKET	80-12	IRON SHEET
20	OIL DRAIN	57	FUEL TANK PIN	80-13	REAR COVER
21	LEFT BRACKET	58	PLAIN WASHER Φ6*25*1.5	80-14	SWITCH
22	RIGHT BRACKET	59	BOLT M6*22	80-15	BARRIER TERMINAL BLOCKS
23	LEFT SHOCKPROOF FOOT	60	OIL GAGE	80-16	BOLT Φ7 ST3.5*13F
24	RIGHT SHOCKPROOF FOOT	61	FUEL TANK FILTER	81	BOLT M6*25
25	BOLT M8*40	62	SUPPORTING BLOCK	82	WIND SCOOPER
26	BOLT M8*16	63	FUEL TANK COVER	83	CUSHION
27	CHARGER DC 14.5V	64	BOLT M5*32	84	BOLT M5*12
28	BOLT M6*18*8	65	HANDLE JOINT	85	PANEL WIRING HARNESS
29	RIGHT FRAME ASSEMBLY	66	FRONT HANDEL ASSEMBLY	86	BATTERY RETAINER
29-1	RIGHT FRAME	66-1	LIMITING PIN Φ6*16	87	RUBBER GASKET
29-2	CUSHION	66-2	HANDLE SEAT	88	LITHIUM BATTERY PACK
29-3	RIGHT DECORATIVE PLATE	66-3	FRONT HANDLE	89	BANDAGE 145*16
29-4	CHROME PLATE TRIM STRIP	66-4	STEEL BALL	90	FREQUENCY CONVERTER MODULE
29-5	BAFFLE	66-5	SPRING Φ1.4*8*10	91	HEAT INSULATION PAPER
29-6	BOLT M5*12	67	FUEL TANK CAP	92	HEAT INSULATION PAPER
29-7	BOLT M6*12	68	HANDLE	93	HEAT INSULATION PAPER
29-8	SCREW	69	OIL LEVEL LENS	94	HEAT INSULATION PAPER
30	WHEEL CAP	70	OIL GUIDE	95	HEAT INSULATION PAPER
31	BOLT M6*12	71	BOLT M6*12	96	HEAT INSULATION PAPER
32	WHEEL	72	KNOB	97	HEAT INSULATION PAPER
33	PLAIN WASHER	73	COVER PLATE	98	HEAT INSULATION PAPER
34	BOLT M6*12	74	LEFT DECORATIVE PLATE	99	HEAT INSULATION PAPER
35	CHASSIS	75	BOLT M6*14	100	HEAT INSULATION PAPER
36	BASEBOARD	76	FIXED RUBBER RING		



ENGINE FOR PGM8738IE

NO	DESCRIPTION	NO	DESCRIPTION
1	BOLT M5*12	39	PISTON
2	RECOIL STARTER ASSEMBLY	40	PISTON RING
3	BOLT M6*16	41	CYLINDER HEAD GASKET
4	FAN CASE	42	LOCATING PIN 10*16
5	BOLT M6*12	43	CYLINDER HEAD
6	STARTING PULLEY	44	BOLT M8*58
7	FAN	45	BREATHER GASKET
8	FLYWHEEL NUT M14*1.5	46	WIND SCOOPER (CYLINDER HEAD)
9	ROTOR	47	BEATHER
10	BOLT M6*55	48	BEATHER PIPE
11	STATOR	49	AIR CLEANER ASSY
12	BOLT M6*12	50	AIR FILTER GASKET
13	TENSION DISC	51	CARBURETOR
14	CRANKCASE	52	INSULATION BOARD GASKET
15	BEARING C&U P6	53	INSULATION BOARD RUBBER GASKET
16	CRANKSHAFT S1	54	INSULATION BOARD
17	GASKET (CRANKCASE)	55	AIR INLET GASKET
18	LOCATING PIN 8*14	56	BOLT M6*97
19	CRANKCASE COVER (LOW)	57	SPARK PLUG
20	BOLT M8*40	58	AIR EXHAUST BOLT M8*32
21	BOLT M8*32		VALVE ROCKER
22	OIL SEAL 25*41.25*6		VALVE ADJUSTING BOLT
23	BOLT ST4.8*13F Φ 8.5	59	VALVE ADJUSTING NUT
24	WIND SCOOPER		VALVE LOCKING NUT
25	MOTOR	60	PUSHING ROD BRACKET
26	OIL PROTECTOR	61	PUSHING ROD
27	BOLT M6*30	62	LIFTER
28	OIL ALERT	63	EXHAUST VALVE
29	HIGH VOLTAGE SET	64	INTAKE VALVE
30	LOCATING PIN 8*12	65	OIL RETAINING CAP
31	DRAIN PLUG WASHER Φ 10*16*1.5	66	VALVE SPRING
32	DRAIN PLUG	67	INTAKE VALVE SPRING SEAT
33	CAMSHAFT	68	EXHAUST VALVE SPRING SEAT
34	RUBBER SEALING STRIP 6MM*6MM	69	TOP CAP
35	OIL GAGE		
36	CONNECTING ROD		
37	PISTON PIN		
38	PISTON PIN CLIP		