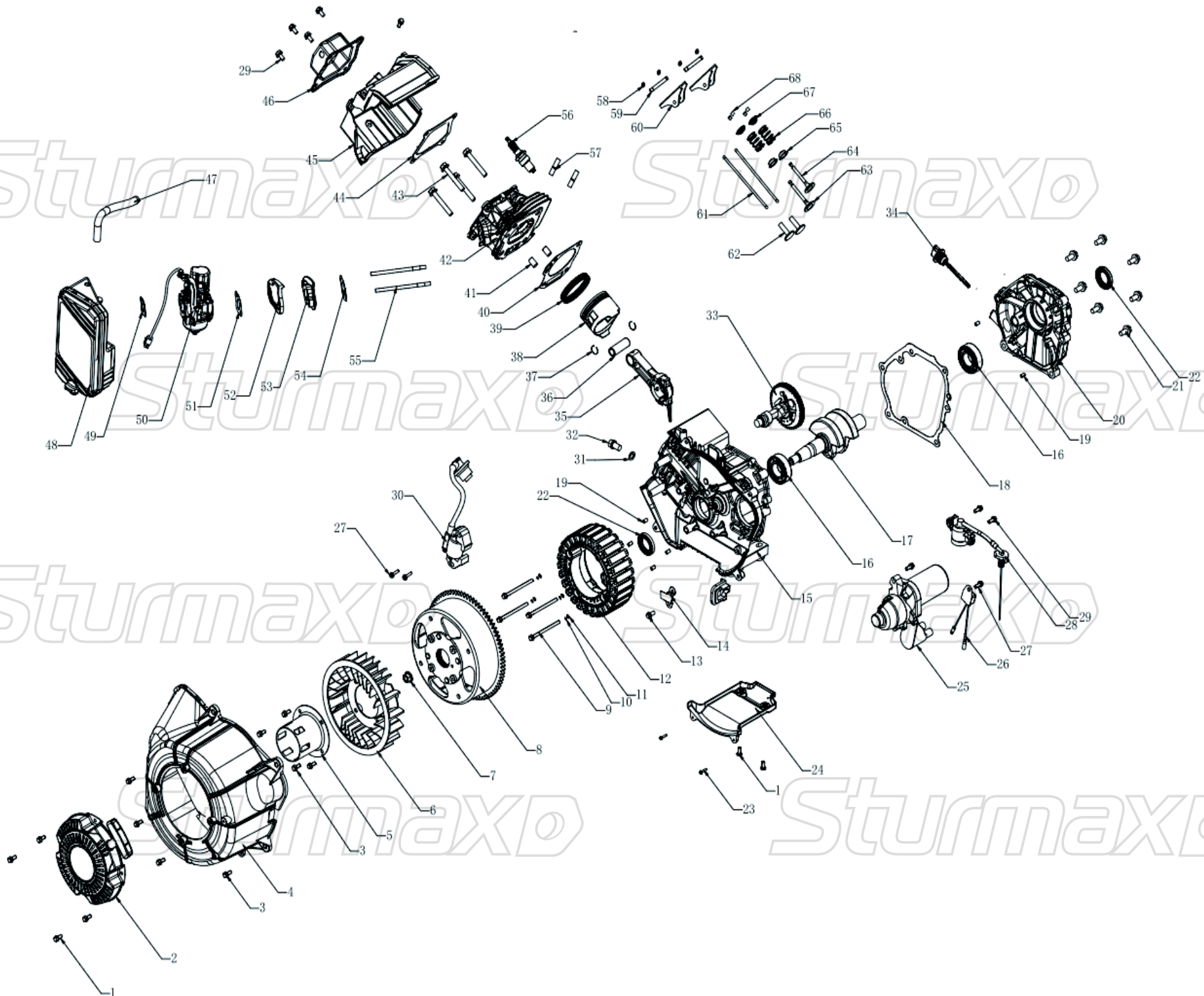


PGM8750IE

NO	DESCRIPTION	NO	DESCRIPTION
1	FUEL TUBE	32	OIL SWITCH
2	AIR FILTER BRACKET	33	SHROUD COMP
3	ENGINE	34	MODULE CLAMP
4	MUFFLER GASKET	35	BOLT,FLANGE M6*16
5	SPRING WASHERS Φ 8	36	BOLT,FLANGE M6*25
6	NUT,FLANGE M8	37	WIND BOARD
7	MUFFLER	38	SCREW ST4.8*13F
8	MUFFLER COVER	39	FREQUENCY CONVERSION MODULE
9	BOLT,FLANGE M6*12	40	CHARGER
10	BOLT,FLANGE M6*12	41	LITHIUM BATTERY
11	BACK BRACKET	42	CLAMP
12	FRONT BRACKET	43	BOLT,FLANGE M6*12
13	BOLT,FLANGE M8*40	44	DC PROTECTOR
14	RUBBER BOTTOM	45	MAFUNCTION INDICATOR LAMP
15	RUBBER BOTTOM	46	OUTPUT INDICATOR LAMP
16	BOLT,FLANGE M8*25	47	OIL INDICATOR LAMP
17	BOLT,FLANGE M6*25	48	PANEL
18	PIN,DOWEL 10*16	49	BOLT,FLANGE M6*16
19	RUBBER FOOT	50	DAM-BOARD
20	FRAME	51	SCREW M5*12
21	FUEL TANK SWITCH	52	PREVENTER PLATE
22	FUEL TANK	53	CHOKER ROD
23	FUEL TANK PIN	54	ENERGY SAVING SWITCH
24	FUEL TANK GASKET	55	SWITCH ELECTRIC START
25	FLAT WASHER	56	DIGITAL VOLTAGE METER
26	BOLT,FLANGE M6*22	57	DC SOCKET
27	FUEL TANK CAP	58	GROUND BOLT
28	TANK FILTER	59	EUROPEAN SOCKET
29	FUEL LEVEL INDICATOR	60	RECTIFIER BRIDGE
30	OIL JOINT	61	BOLT,FLANGE M5*16
31	TUBE CLAMP		

PGM8750IE-EX-UKW231113PG



ENGINE FOR PGM8750IE

NO	DESCRIPTION	NO	DESCRIPTION
1	FLANGE BOLT M5*12	35	CONNECTING ROD
2	RECOIL STARTER ASSY	36	PISTON PIN
3	FLANGE BOLT M6*16	37	PISTON PIN CLIP
4	FAN COVER	38	PISTON
5	STARTER PULLEY	39	PISTON RING
6	COOLING FAN	40	CYLINDER HEAD GASKET
7	NUT M14*1.5	41	PIN,DOWEL 10*16
8	ROTOR	42	CYLINDER HEAD
9	FLANGE BOLT M6*65	43	FLANGE BOLT M8*58
10	SPRING WASHERS Φ6	44	CYLINDER COVER GASKET
11	FLAT WASHER	45	SHROUD COMP
12	STATOR	46	CYLINDER HEAD COVER
13	FLANGE BOLT M6*12	47	BREATHER TUBE
14	WIRE CLAMP	48	AIR FILTER
15	CRANKCASE	49	AIR FILTER GASKET
16	BEARING 6205	50	CARBURETOR
17	CRANKSHAFT	51	INSULATION BOARD GASKET
18	CRANKCASE GASKET	52	INSULATION BOARD RUBBER RING
19	PIN,DOWEL 8*14	53	INSULATION BOARD
20	CRANKCASE COVER	54	AIR INLET GASKET
21	FLANGE BOLT M8*32	55	BOLT M6*97
22	OIL SEAL	56	SPARK PLUG
23	SCREW ST4.8*13F	57	BOLT M8*32
24	WIND BOARD	58	CLIP
25	STARTING MOTOR	59	ROCKER ARM PIN
26	PROTECTOR	60	ROCKER ARM
27	FLANGE BOLT M6*30	61	PUSHING ROD
28	OIL LEVEL SENSOR	62	LIFTER
29	FLANGE BOLT M6*12	63	INTAKE VALVE
30	HIGH VOLTAGE SET	64	EXHAUST VALVE
31	DRAIN PLUG WASHER	65	OIL CAP
32	DRAIN PLUG	66	VALVE SPRING
33	CAMSHAFT	67	VALVE SPRING SEAT
34	OIL GAUGE	68	VALVE CLIP