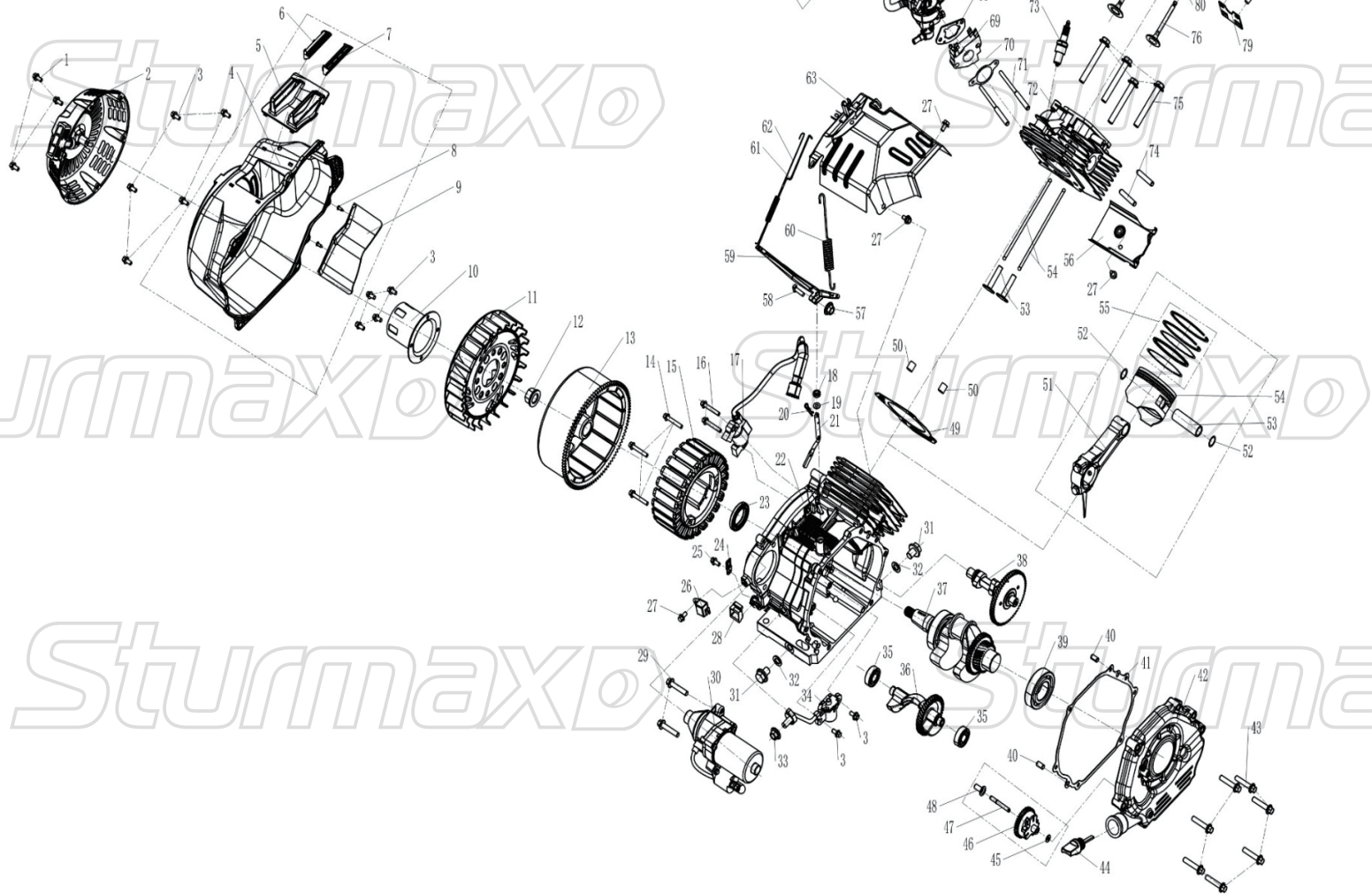


*SturmaxD*



*SturmaxD*

*SturmaxD*

*SturmaxD*

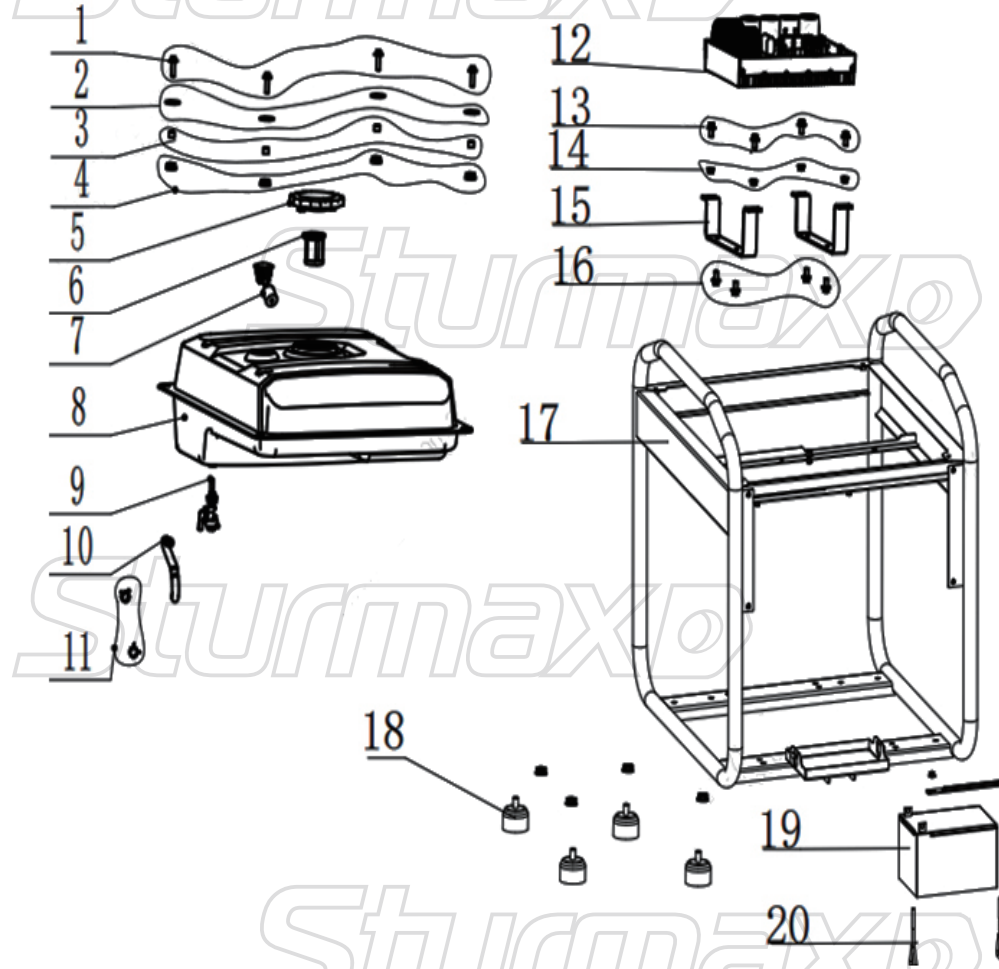
*SturmaxD*

*SturmaxD*

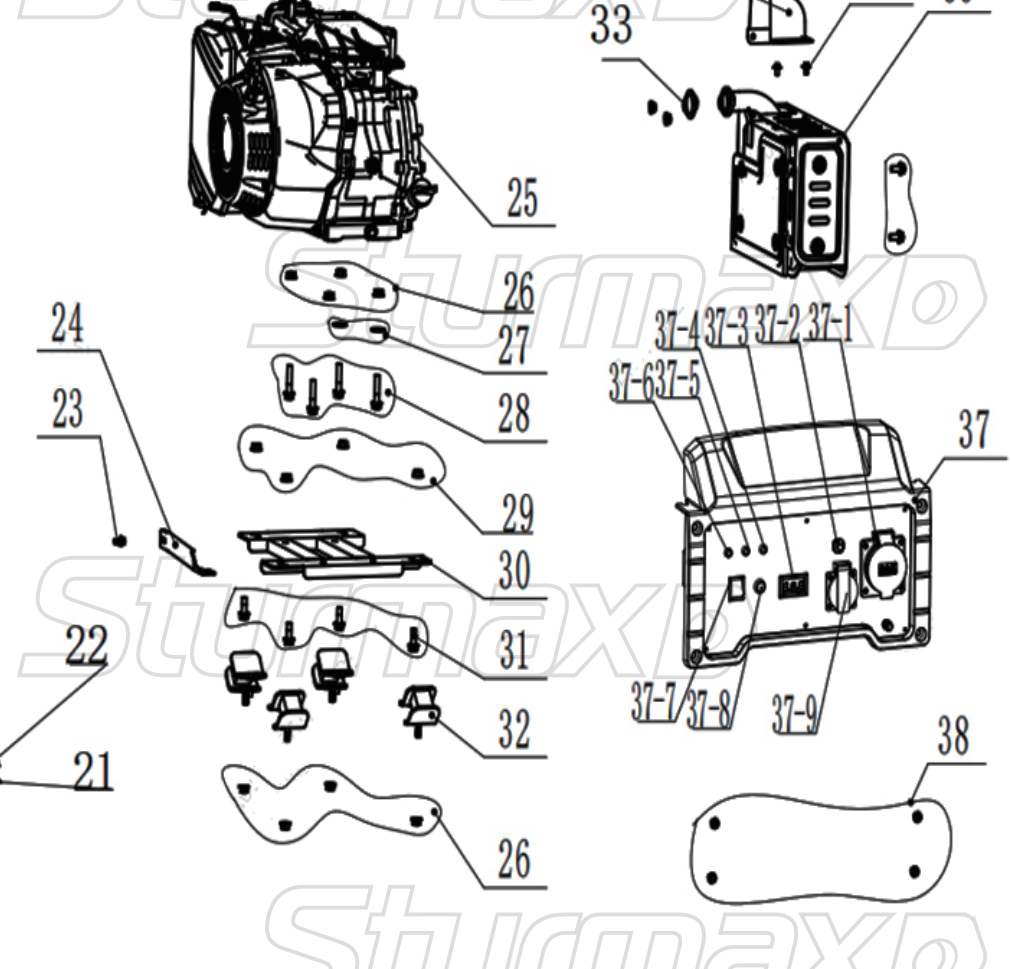
*SturmaxD*

*SturmaxD*

*Sturmaxo*



*Sturmaxo*



## ENGINE FOR PGM8765IE

NO.	DESCRIPTION	NO.	DESCRIPTION
1	BOLT - M6*10	48	BUSHING
2	RECOIL STARTER ASSEMBLY	49	CYLINDER HEAD GASKET
3	BOLT - M6*16	50	DOWEL PIN 12*20
4	FAN COVER	51	CONNECTING ROD
5	AIR GUIDE	52	PISTON PIN CLIP
6	LEFT AIR OUTLET	53	PISTON PIN
7	RIGHT AIR OUTLET	54	PISTON
8	ST4.2×13	55	PISTON RING
9	FAN COVER LOWER AIR GUIDE BLOCK	56	LOWER INDUCED DRAFT FAN COVER
10	RECOIL STARTER PULLEY	57	NUT M6
11	COOLING FAN	58	T BOLT - M6*21
12	NUT - M16*1.5	59	GOVERNOR ARM
13	ROTOR	60	GOVERNOR SPRING
14	BOLT - M6*65	61	PULL ROD
15	STATOR	62	PULL ROD SPRING
16	BOLT - M6*25	63	GOVERNOR BRACKET
17	IGNITION COIL	64	AIR CLEANER
18	OIL SEAL 8*14*4	65	BREATHER HOSE
19	FLAT WASHER $\Phi$ 8.5*16*1	66	AIR FILTER GASKET
20	SWING LEVER PIN	67	CARBURETOR
21	SWING LEVER	68	HEAT INSULATOR GASKET
22	CRANKCASE	69	CARBURETOR HEAT INSULATOR
23	OIL SEAL 35*52*8	70	INTAKE PORT GASKET
24	WIRE CLAMP PLATE	71	BOLT - M6*8*111
25	BOLT - M5*10	72	CYLINDER HEAD
26	ISOLATOR	73	SPARK PLUG
27	BOLT - M6*12	74	BOLT - M8*32
28	GROMMET	75	BOLT - M10*80
29	BOLT - M8*25	76	EXHAUST VALVE
30	STARTER MOTOR	77	INTAKE VALVE
31	OIL DRAIN BOLT	78	VALVE SEAL
32	OIL DRAIN BOLT GASKET	79	PUSH ROD BRACKET
33	NUT - M10*1.5	80	VALVE SPRING SEAT
34	OIL ALARM	81	VALVE SPRING
35	BEARING 6202	82	VALVE SPRING RETAINER
36	BALANCE SHAFT	83	VALVE ADJUSTING BOLT
37	CRANKSHAFT	84	VALVE LOCK
38	CAMSHAFT	85	TOP CAP
39	BEARING 6207	86	VALVE ROCKER ARM
40	DOWEL PIN 8*14	87	VALVE ADJUSTING NUT
41	CRANKCASE GASKET	88	VALVE LOCKING NUT
42	INVERTER LOWER COVER	89	BREATHER GASKET
43	BOLT - M8*40	90	BREATHER
44	OIL GAUGE	91	SCREW RUBBER RING
45	GOVERNOR GEAR GASKET	92	BREATHER METAL SEALING CAP JB
46	GOVERNOR GEAR	93	BREATHER BOLT - M6*61
47	GOVERNOR SHAFT		

SturmaxD

PGM8765IE

SturmaxD

NO.	DESCRIPTION	NO.	DESCRIPTION
1	BOLT	26	LOCK NUT
2	FLAT WASHER	27	FLAT WASHER
3	FUEL TANK BUSHING JB	28	BOLT
4	INDUCED DRAFT FAN VIBRATION DAMPING SLEEVE SB	29	LOCK NUT
5	FUEL TANK CAP DH	30	BRACKET BASE PLATE
6	FUEL FILTER	31	BOLT
7	OIL LEVEL INDICATOR (ROUND)	32	DAMPING FOOT
8	FUEL TANK	33	MUFFLER GASKET LM
9	FUEL TANK VALVE GC	34	MUFFLER EXHAUST PIPE HEAT SHIELD
10	FUEL HOSE	35	BOLT
11	HOSE CLAMP FD	36	MUFFLER ASSEMBLY
12	INVERTER MODULE ASSEMBLY YP	37	PANEL
13	BOLT	37-1	SOCKET
14	LOCK NUT	37-2	PROTECTOR
15	MODULE BRACKET	37-3	3-IN-1 DIGITAL METER
16	BOLT	37-4	FAULT INDICATOR LIGHT
17	FRAME	37-5	OUTPUT INDICATOR LIGHT
18	FRAME FOOT HD	37-6	OIL INDICATOR LIGHT
19	BATTERY	37-7	ROCKER ELECTRIC START SWITCH
20	BOLT	37-8	RESET SWITCH
21	BATTERY CLAMP	37-9	EUROPEAN SOCKET
22	LOCK NUT	38	BOLT
23	BOLT		
24	AIR FILTER BRACKET		
25	ENGINE		

PGM8765IE-EX-UK251218PG

SturmaxD

SturmaxD