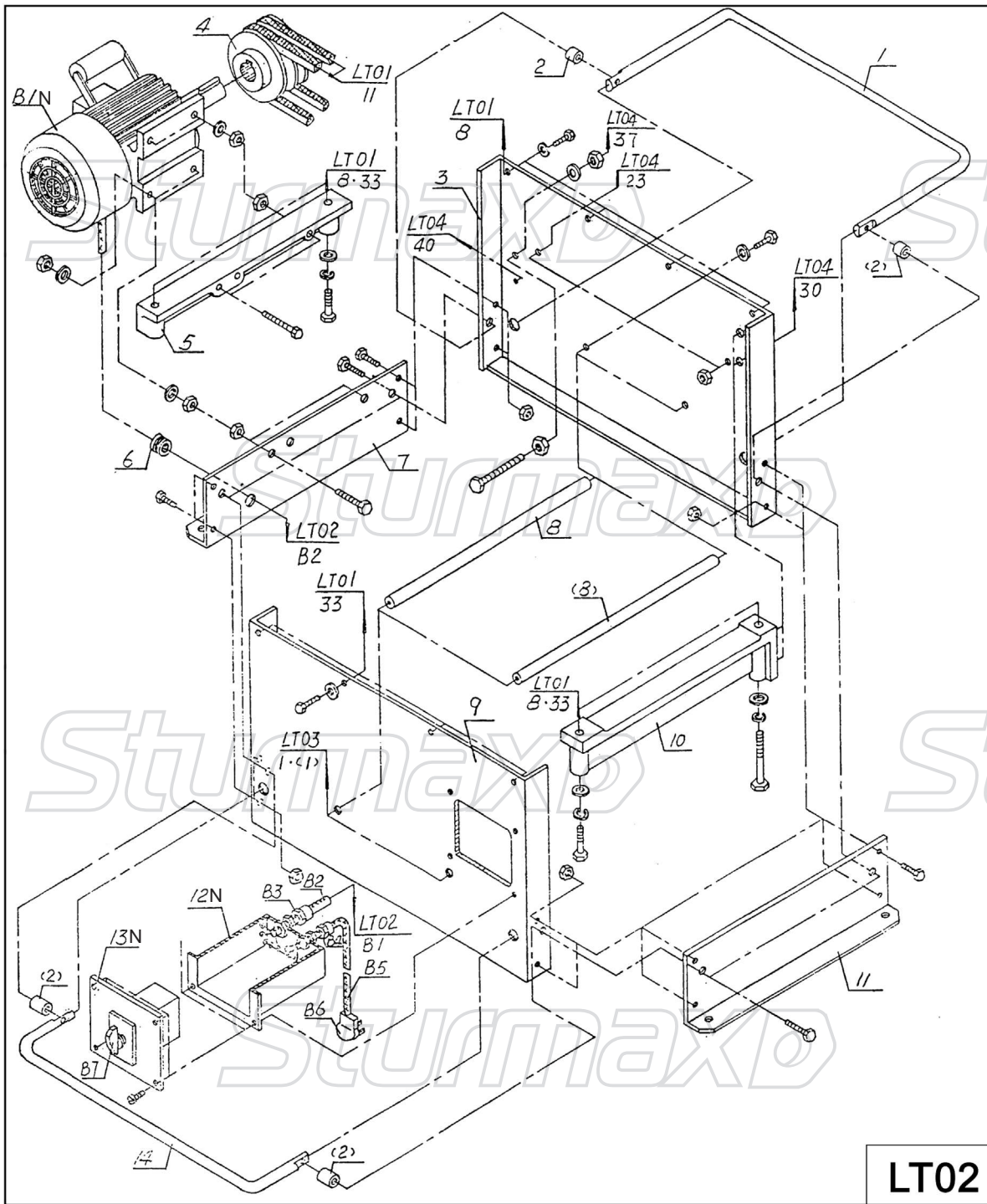
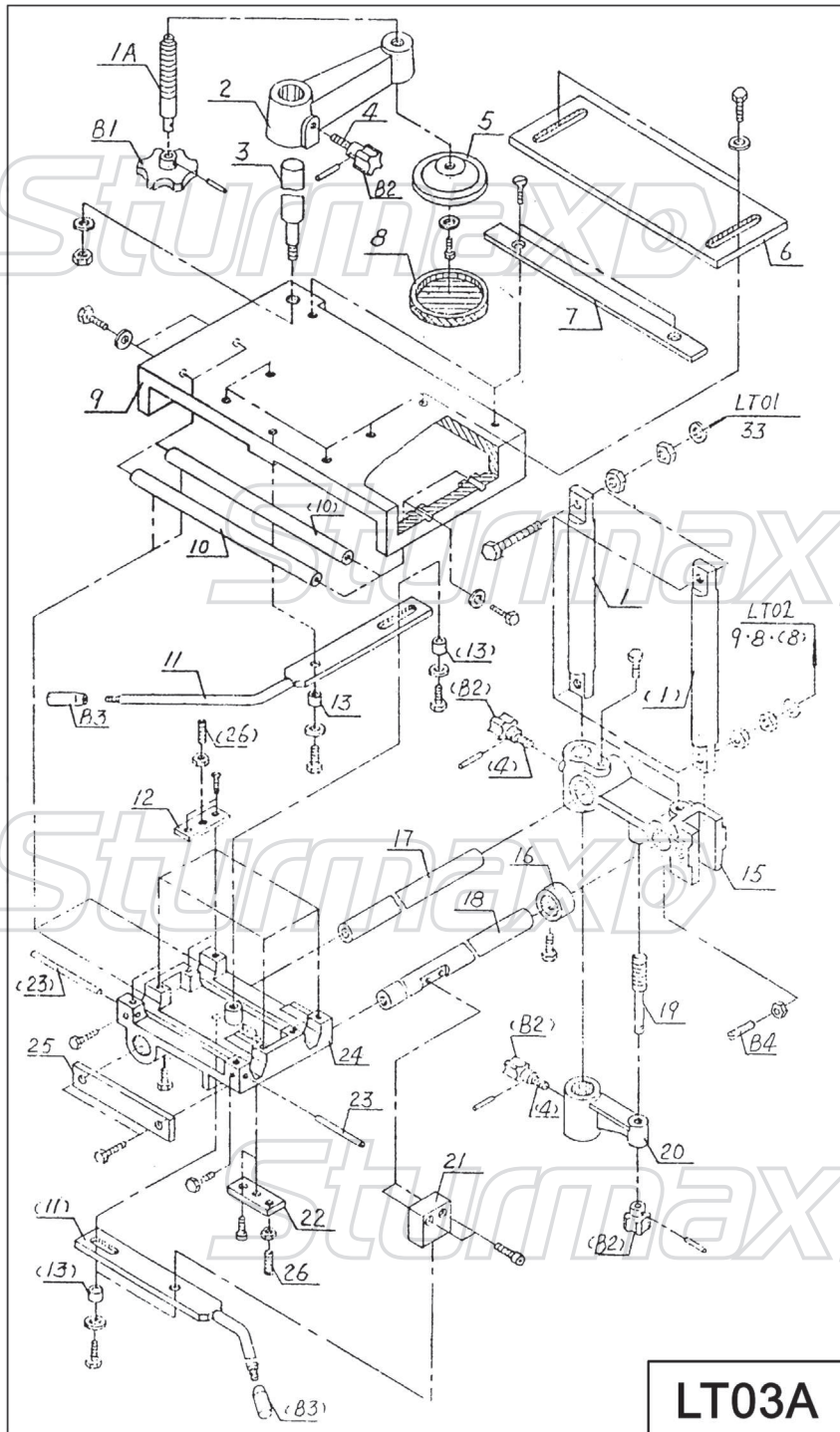


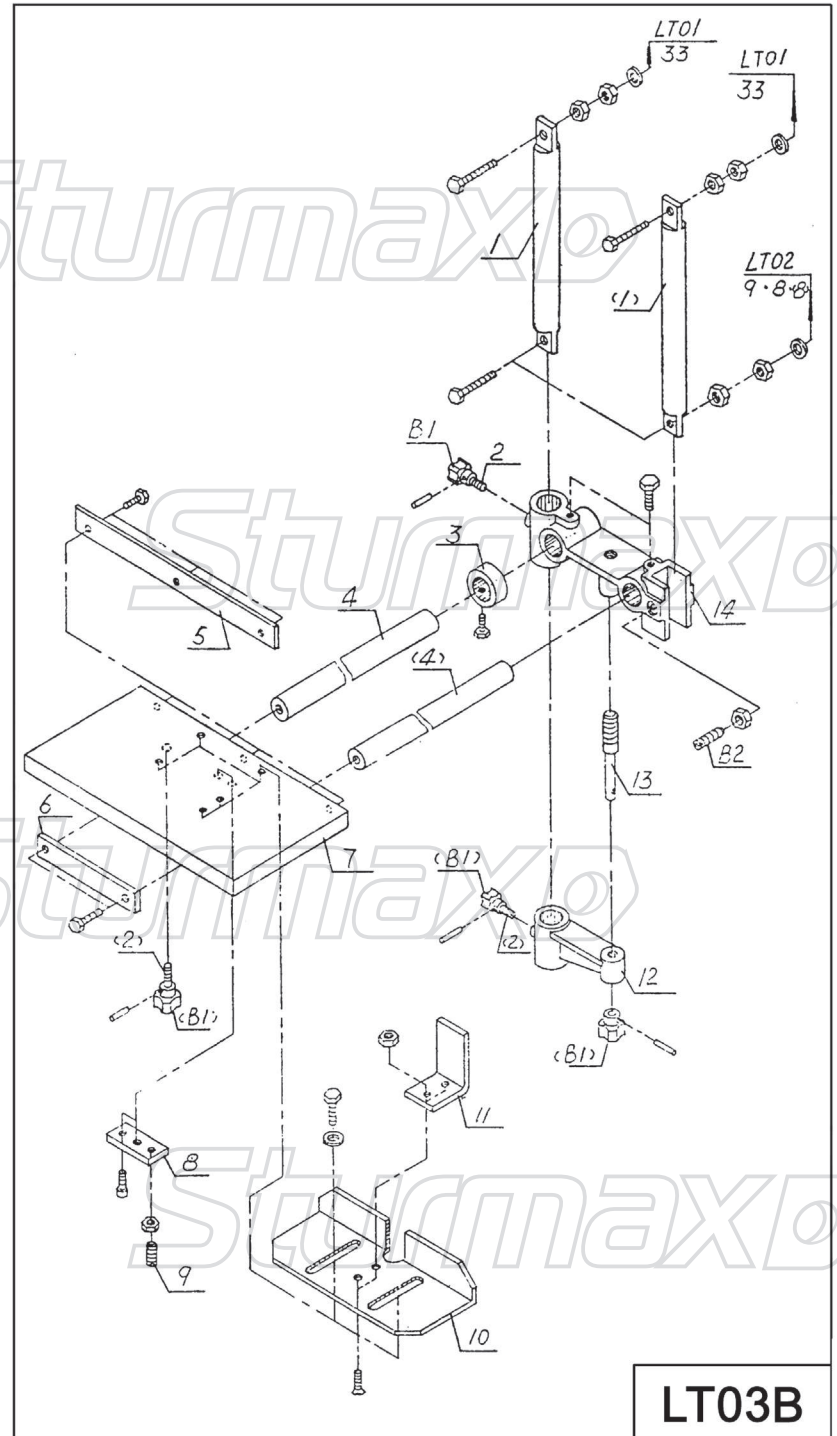
LT01



**LT02**

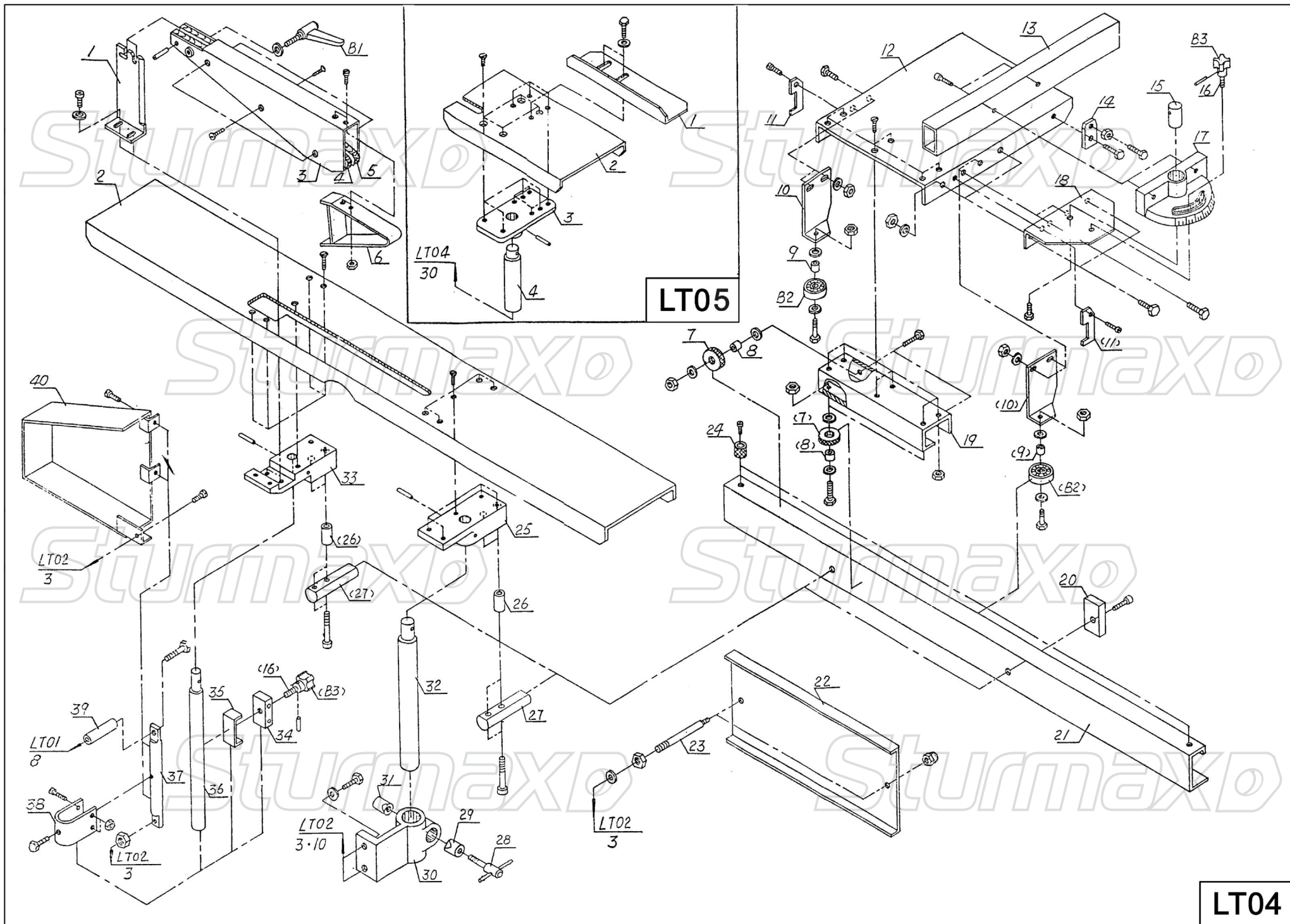


LT03A



LT03B





LT04

### WMM1921 Part List LT01

No.	Name (specification)	No.	Name (specification)
1	back bench	27	locking bar
2	chamfering guide	28	left slider
3	back lip plate (2)	29	spring
4	planing tool (3)	30	tool adjust spring
5	tool presser (3)	31	limit pin
6	arbor	32	arbor hood
7	flat spacer (4)	33	left bearing base
8	right bearing base	34	bearing cover
9	distance spacer	35	spacer
10	bearing cover	36	hood base
11	pulley	37	screw arbor
12	press disk	38	tool cover
13	nut (2)	39	down supporter
14	shield ring (2)	40	up supporter
15	guide	41	supporter base
16	sliding base	B1	hard carbide saw blade 250x3.2x30
17	nut (2)	B2	V-belt A800 (2)
18	locking fastening	B3	single-row radial ball bearing 204 (2)
19	square guide	B4	adjustable locking knob BM8x63x20
20	right slider	B5	knob case M8x25
21	front bench	B6	open-ended pin 2.5x20
22	ruler	B7	knob case M6x20
23	guide track	B8	drill bit Ø10x133
24	knob	B9	drill chuck Js 13/2
25	round guide	B10	cross knob 8x40
26	back stopper		

### WMM1921 Part List LT02

No.	Name (specification)	No.	Name (specification)
1	handle	12N	switch box
2	press case (4)	13N	switch board
3	right plate	14	handle
4	pulley	B1N	motor YC90L-2
5	strengthen base	B2	PVC cover copper wire RVV-300/500V 4x1+1x10(0.9m)
6	wire cover	B3	wire tube connector BD97-4-20x1.5
7	back foot plate	B4	wire tube connector BD97-4-16x1.5
8	strengthen arbor (2)	B5	PVC cover copper wire RVV-300/500V 2x1+1x1(3m)
9	left plate	B6	single phase three draw plug_50V 10A
10	strengthen base	B7	combined switch HZ5-20/4M 05
11	front foot plate		

WMM1921-EX-UKW230411

### WMM1921 Part List LT03A

No.	Name (specification)	No.	Name (specification)
1	guide pole (2)	16	locating ring
1A	screw arbor	17	round track
2	radial arm	18	round track
3	pole	19	screw arbor
4	screw arbor (3)	20	micro-adjust screw base
5	presser	21	support base
6	locate plate	22	presser
7	locater	23	pole (2)
8	presser case	24	slider
9	drill bench	25	connect plate
10	round track (2)	26	screw (5)
11	handle (2)	B1	hand wheel B10x80
12	presser (4)	B2	cross handle 8x40 (4)
13	press case (4)	B3	handle case BM10x50 (2)
15	sliding base	B4	copper screw M6x16

### WMM 1921 Part List LT03B

No.	Name (specification)	No.	Name (specification)
1	guide pole (2)	9	screw
2	screw arbor (3)	10	fence
3	locating ring	11	hood
4	guide track (2)	12	mic-adjust
5	hood	13	screw arbor
6	connect plate	14	sliding base
7	drilling bench	B1	cross knob 8x40 (4)
8	presser	B2	copper screw M6x16

### WMM1921 Part List LT04

No.	Name (specification)	No.	Name (specification)
1	splitter	23	hood pole (2)
2	saw table	24	limit block (2)
3	saw cover	25	saw table base
4	hood	26	distance case (4)
5	hood	27	track base (2)
6	handle	28	knob bolt
7	roller (4)	29	locking case
8	press case (4)	30	sawing supporter
9	press case (2)	31	locking nut
10	roller supporter (2)	32	sawing pole
11	locker (2)	33	saw table base
12	cross-cutting table	34	nut
13	ruler	35	spacer
14	locating plate	36	saw table assist pole
15	locating pole	37	pole
16	screw arbor (2)	38	U-plate
17	index	39	distance case
18	index base	40	hood
19	roller supporter	B1	adjustable locking knob BM8x63x32
20	presser (2)	B2	single-row radial ball bearing 80100 (2)
21	cross-cutting track	B3	cross knob 8x40 (2)
22	hood		

### WMM1921 Part List LT05

No.	Name (specification)	No.	Name (specification)
1	locating plate	3	rabbit cutting base
2	rabbit-cutting table	4	rabbit cutting pole

Note: (X) is the parts amount

WMM1921-EX-UKW230411