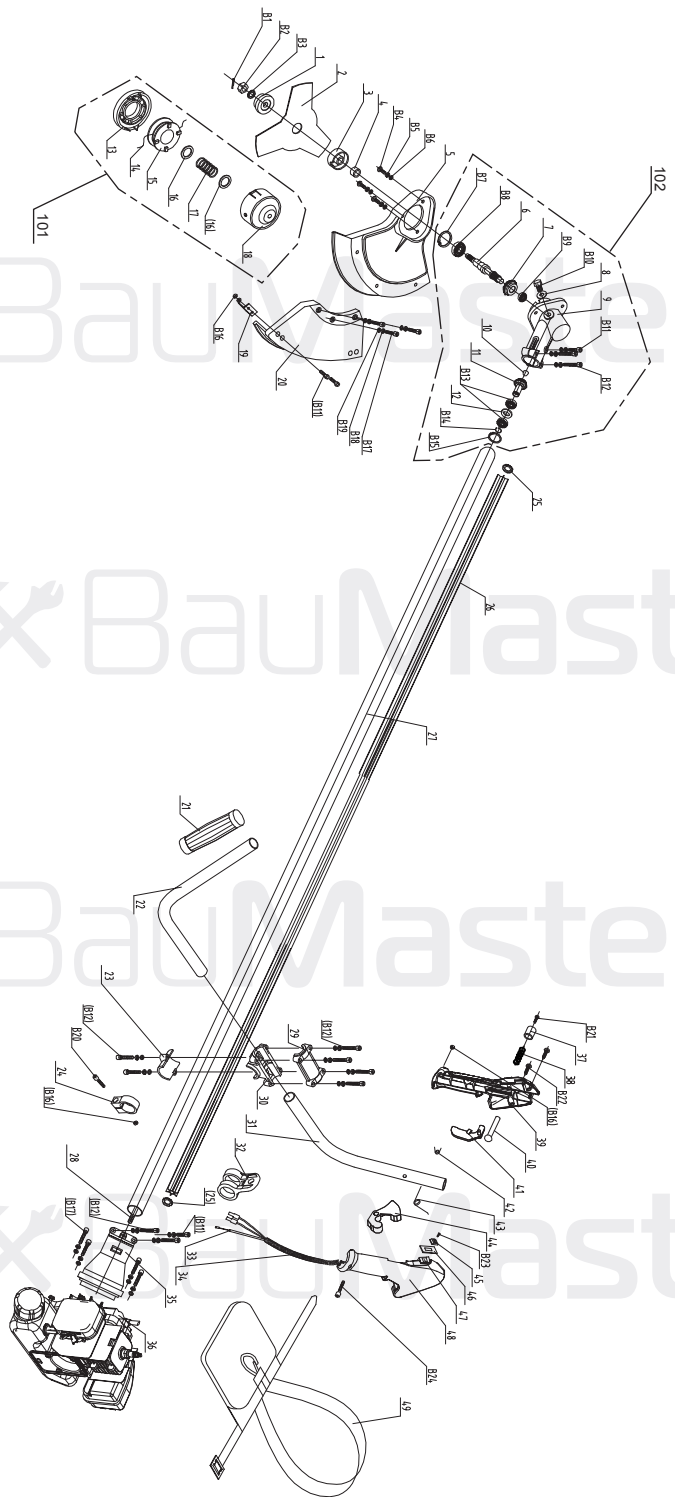
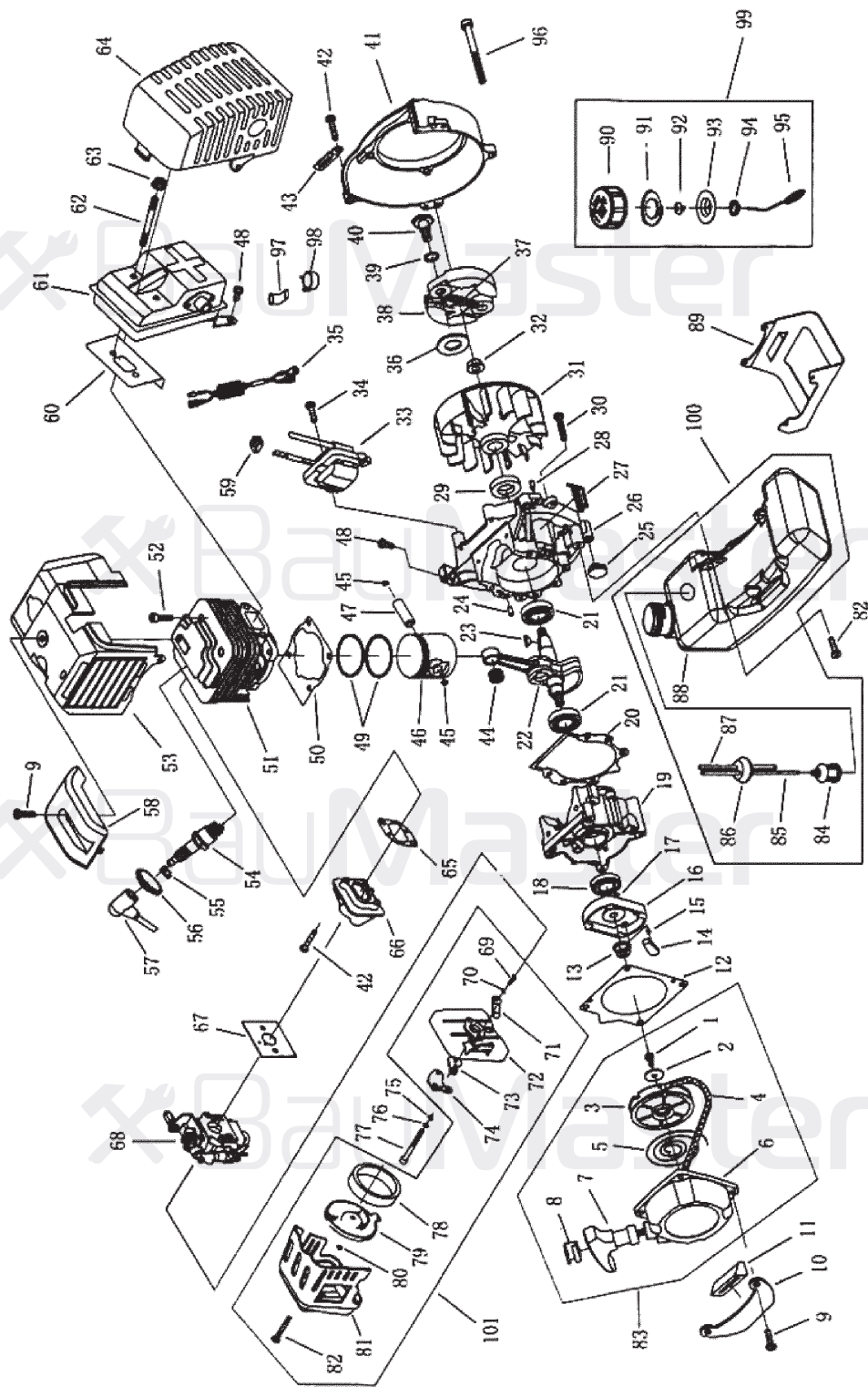


Fig. 1



BT-8943X

NO.	DESCRIPTION	NO.	DESCRIPTION
1	LOWER PLATE	39	HANDLE A
2	BLADE	40	PIN
3	UPPER PLATE	41	INSURANCE OF THE TRIGGER
4	BUSH	42	TORSION-BAR SPRING A
5	GUARD SHIELD OF BLADE	43	TORSION-BAR SPRING B
6	DRIVEN SHAFT	44	THROTTLE TRIGGER
7	DRIVEN GEAR	45	SWITCH
8	AIRPROOF GASKET	46	ALUMINUM LABEL
9	GEAR CASE	47	SWITCH ASSEMBLY
10	JAM	48	HANDLE B
11	DRIVE GEAR SHAFT	49	SHOULDER STRAP
12	BEARING WASHER	B1	PIN 2x16
13	ROPE WHEEL COVERING	B2	SCREW M10x1.25
14	NYLON ROPE	B3	WASHER 10
15	ROPE SEAT	B4	SCREW
16	GASKET	B5	SPRING WASHER 5
17	PULL-OUT SPRING A	B6	GASKET 5
18	BOX OF ROPE	B7	BAFFLE RING 32
19	KNIFE	B8	BEARING 6201
20	PLASTIC GUARD SHIELD	B9	BEARING 629
21	RUBBER COVER	B10	BOLT M8x10
22	STEEL TUBE A	B11	SCREW M5x12
23	LOWER PLATE	B12	SCREW M5x25
24	ORIENTATING RING	B13	BEARING 6900-Z
25	BAFFLE RING	B14	BAFFLE RING 10
26	PLASTIC TUBE A	B15	BAFFLE RING 22
27	ALUMINUM TUBE	B16	NUT M5
28	FLEXIBLE SHAFT	B17	SCREW M6x20
29	UPPER PLATE	B18	SPRING WASHER 6
30	ORIENTATING BLOCK	B19	WASHER 6
31	STEEL TUBE B	B20	SCREW M5x16
32	RING	B21	SCREW ST2.9x15
33	THROTTLE LINE	B22	SCREW ST2.9x20
34	PLASTIC TUBE	B23	SCREW ST2.9x9
35	CLUTCH COVER	B24	SCREW M5x30
36	ENGINE	101	NYLON LINE SPOOL (13+14...+18)
37	LOCK BUTTON	102	GEAR BOX ASSEMBLE (6+7...+12+B7+B8...+B15)
38	PULL-OUT SPRING B		



ENGINE FOR BT-8943X

NO.	DESCRIPTION	NO.	DESCRIPTION	NO.	DESCRIPTION
1	SCREW	35	CORD COMP.	69	SCREW
2	WASHER	36	WASHER B	70	WASHER
3	START ROPE REEL	37	SPRING	71	CHOKE HANDLE
4	ROPE	38	EXPANDER	72	INSIDE COVER
5	RECOIL SPRING	39	WASHER	73	CHOKE
6	START COVER ASS'Y	40	SCREW PIN	74	BUFLER
7	START HANDLE	41	FAN COVER	75	WASHER
8	RING	42	BOLT	76	WASHER
9	SCREW	43	CLIP	77	SCREW
10	STAND	44	BEARING	78	FILTER NET
11	RUBBER COVER	45	RING	79	INSIDE COVER
12	GASKET	46	PISTON	80	O-WASHER
13	NUT	47	PISTON PIN	81	OUTSIDE COVER
14	START CLAW	48	BOLT	82	SCREW
15	START SPRING	49	PISTON RING	83	STARTER
16	START REEL	50	GASKET	84	CLEANER COVER
17	STOP RING	51	CYLINDER	85	FUEL PIPE
18	SEAL	52	SCREW	86	PLUG
19	CRANK CASE	53	GUIDE COVER ASS'Y	87	FUEL PIPE
20	GASKET	54	SPARK PLUG	88	FUEL TANK
21	BEARING 6202/P5	55	SPRING	89	STAND
22	CRANK SHAFT	56	PLUG CAP	90	FUEL TANK LID
23	KEY	57	CAP	91	GASKET
24	PIN	58	COVER	92	INLET
25	RUBBER WASHER	59	PLUG	93	INSIDE COVER
26	CRANK CASE	60	GASKET	94	INSIDE COVER
27	GUIDE COVER	61	MUFFLER	95	CHAIN
28	PIN	62	BOLT	96	SCREW
29	SEAL	63	NUT	97	OUTLET
30	SCREW	64	MUFFLER COVER	98	STOP RING
31	FLY WHEEL	65	GASKET	99	FUEL TANK LID COMP.
32	NUT	66	ADMITTING PIPE	100	FUEL TANK COMP.
33	COIL	67	GASKET	101	AIR FILTER
34	BOLT	68	CARBURETOR		