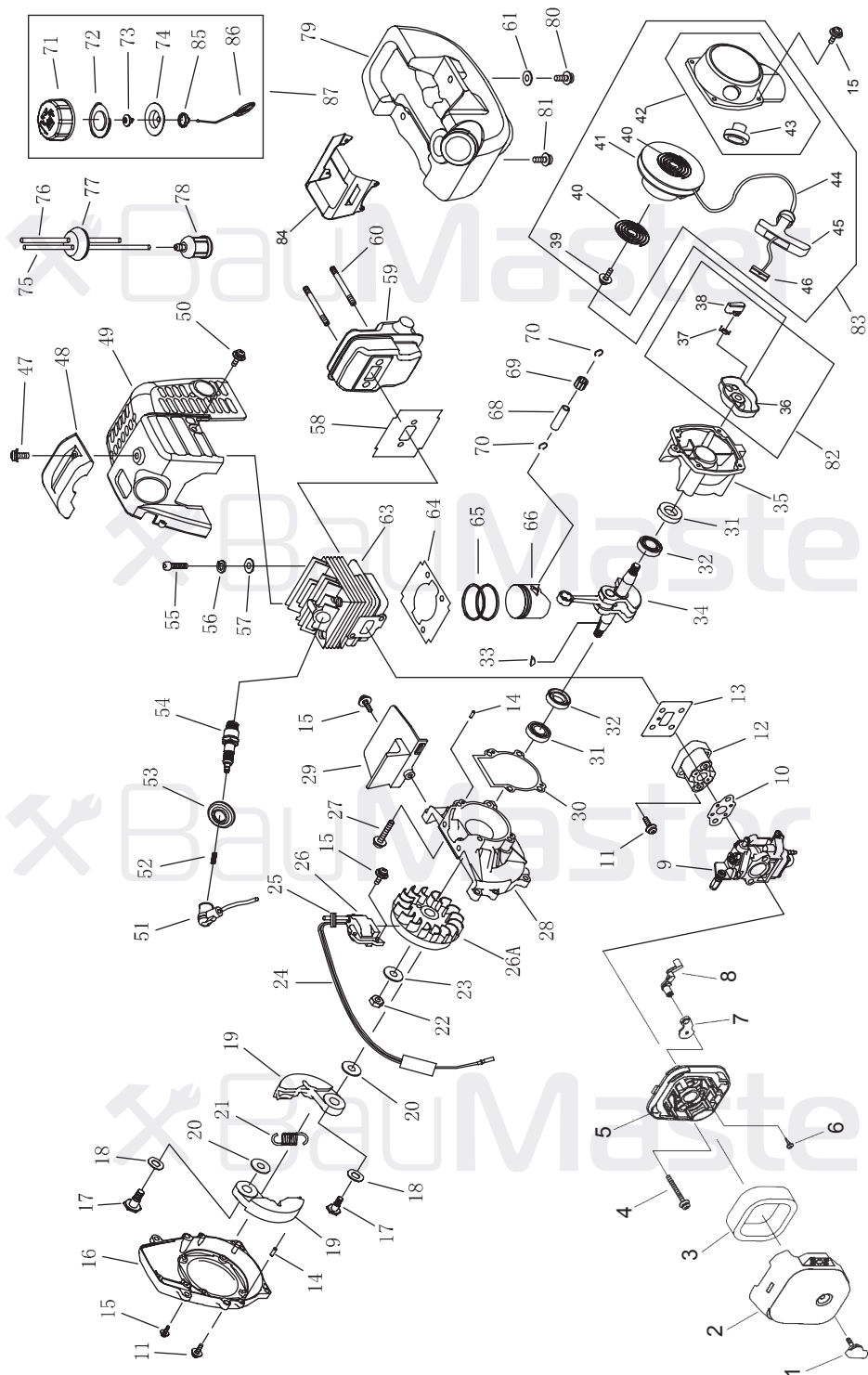


BT-9026EX

NO.	DESCRIPTION	NO.	DESCRIPTION	NO.	DESCRIPTION
1	GEAR CASE ASS'Y	31	HARNES CLAMP	61	HANDGRIP
2	STOP RING	32	CLAMP	62	SPRING
3	STOP RING	33	SCREW M5X20	63	BOX, RIGHT
4	BEARING 6000-2RZ/P5	34	NUT M5	64	SCREW ST2.9X18
5	PINION	35	CLUTCH COMP.	65	SCREW M5X30
6	STEEL PLATE	36	CLUTCH DRUM COMP.	66	CABLE COMP.
7	CAPSCREW M6X20	37	STOP RING	67	TUBE
8	WASHER	38	BEARING 6202-2RZ/P5	68	STOP BUTTON COMP.
9	SCREW M5X12	39	STOP RING	69	HANDGRIP
10	BOLT M6X12	40	LINKER	70	SPRING
11	WASHER	41	RUBBER COVER	71	BOX, LEFT
12	GEAR CASE	42	SCREW M5X25	72	NYLON CUTTER HEAD
13	BLADE COVER	43	WASHER	73	CASE
14	BEARING 6000/P5	44	WASHER	74	LEFT NUT
15	GEAR	46	CLAMP	75	WASHER
16	GEAR SHAFT	47	WIRE CLAMP BAND	76	SPRING
17	BEARING 6002-2RZ/P5	48	HARNES ASS'Y	77	NYLON CORD
18	STOP RING	49	BOLT M5X25	78	CORD HOLDER
19	HOLDER	50	CAP, LOWER	79	PLATEN
20	HOLDER	51	BRACKET	80	COVER
21	HOLDER	52	HANDLE	81	BRACKET
22	LEFT NUT	53	GRIP LEFT	82	SCREW M5X30
24	BLADE	54	CAP, UPPER	83	SAFETY GUARD
25	PIPE COMP.	55	HANDLE	84	WASHER
26	RUBBER COVER	56	LEVER ASS'Y	85	SCREW M5X16
27	OIL-BEARING	57	SCREW ST2.9X13	86	SCREW ST4.2X16
28	DRIVE SHAFT	58	BUTTON	87	GUARD
29	PIPE	59	SPRING	88	BLADE
30	HOLDER ASS'Y	60	CLOCK PIN	89	GUARD ASS'Y

BM20121116



БЕНЗОДВИГАТЕЛЬ ДЛЯ ВТ-9026ЕХ

NO.	DESCRIPTION	NO.	DESCRIPTION	NO.	DESCRIPTION
1	SCREW	29	GUIDE PLATE	58	GASKET
2	CLEANER OUTSIDE COVER	30	CRANK CASE GASKET	59	MUFFLER COMP
3	CLEANER ELEMENT	31	OIL SEAL	60	BOLT
4	SCREW M5X55	32	BALL BEARING 6001/P5	63	CYLINDER
5	CLEANER INSIDE COVER	33	KEY	64	CYLINDER WASHER
6	SCREW ST4.2X12-F-H	34	CRANK SHAFT COMP	65	PISTON RING
7	CHOKE	35	REAR HALF CRANK CASE	66	PISTON
8	CHOKE HANDLE	36	STARTER PULLEY ASS'Y	68	PISTON PIN
9	CARBURETOR	37	STARTER PAWL SPRING	69	NEEDLE BEARING
10	GASKET	38	STARTER PAWL	70	PISTON PIN CIRCLET
11	SCREW M5X20	39	SCREW M5X10	71	FUEL TANK LID
12	INLET MANIFOLD	40	RECOIL SPRING	72	GASKET
13	CYLINDER WASHER	41	STARTER ROPE REEL	73	AIRINLET MOUTH
14	PIN	42	RECOIL STARTER BODY	74	INSIDE COVER
15	SCREW M4X16	43	ROPE GUIDE	75	OUTLET FUEL PIPE
16	FAN COVER	44	ROPE	76	INLET FUEL PIPE
17	CLUTCH STEP SCREW	45	STARTER HANDLE	77	PRIMARY CORD GROMMET
18	WASHER	46	GASKET	78	CLEANER
19	CLUTCH SHOE COMP	47	SCREW M5X14	79	FUEL TANK
20	WASHER	48	COVER	80	SCREW M5X16
21	CLUTCH SPRING	49	COVER	81	SCREW M5X16
22	NUT M8X1	50	SCREW M4X12	82	STARTER PULLEY ASS'Y
23	WASHER	51	PLUG CAP	83	STARTER
24	STOP CORD COMP	52	CLICK SPRING	84	BRACKET
25	PRIMARY CORD GROMMET	53	PLUG COVER	85	LID
26	MAGNETO STATOR	54	SPARK PLUG	86	CHAIN
26A	MAGNETO ROTOR	55	SCREW M5X20	87	FUEL TANK LID COMP
27	SCREW M5X25	56	WASHER		
28	FRONT HALF CRANK CASE	57	WASHER		

BM20121116