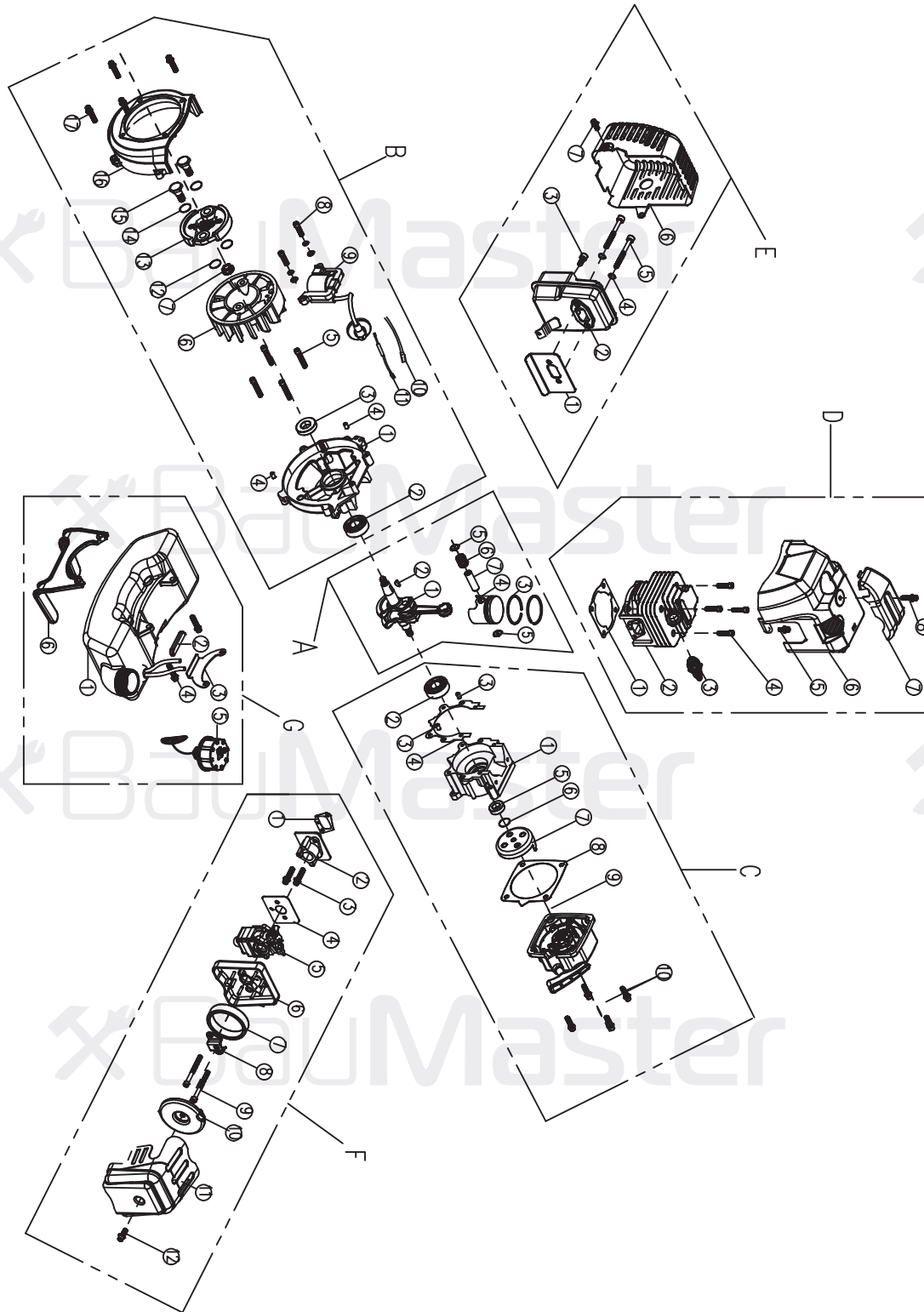


BT-9043S

NO.	DESCRIPTION	NO.	DESCRIPTION
1	CLUTCH CASE ASSY	16	TRANSMISSION SHAFT
2	BELT	17	BEARING
3	LIFTING RING(SMALL)	18	NYLON CUTTER
4	LIFTING RING(BIG)	19	SCREW M6*30 (BUILT-UP)
5	SWITCH ASSY	20	SCREW M6*25 (BUILT-UP)
6	LEFT HANDLE	21	SCREW M5*14 (BUILT-UP)
7	HANDLE HOLDER(UP)	22	SCREW M5*20 (BUILT-UP)
8	HANDLE HOLDER(MIDDLE)	23	NUT M5
9	HANDLE HOLDER(DOWN)	24	SCREW M5*20
10	SHAFT PIPE	25	SCREW M5*25(BUILT-UP)
11	PROTECTOR HOLDER	26	SCREW M5*30(BUILT-UP)
12	GEAR BOX ASSY	27	CUTTING KNIFE
13	3T BLADE	28	SCREW ST4.2*8
14	PROTECTOR	29	SWITCH ALU PIPE
15	LINK PLATE	30	LEFT HANDLE ALU PIPE

UK-BM20181011

ЭЛЕКТРОДВИГАТЕЛЬ ДЛЯ ВТ-9043S



Area A

NO.	DESCRIPTION
1	CRANKSHAFT
2	KEY 3*5*13
3	PISTON RING
4	PISTON
5	PISTON PIN RING
6	BEARING
7	PISTON PIN

Area B

NO.	DESCRIPTION
1	CRANKSHAFT CASE (LEFT)
2	BEARING 6202
3	OIL SEAL 15*30*7
4	PIN $\Phi 5 \times 10$
5	SCREW M5*35
6	FLYING WHEEL
7	NUT M8*1
8	SCREW M5*20
9	COIL
10	GROUND LEAD
11	SHUT DOWN WIRE
12	GASKET 8
13	CLUTCH ASSY
14	GASKET 10
15	SCREW M8*9.8*24
16	SIDE COVER
17	SCREW M5*25
18	SCREW M5*30

Area C

NO.	DESCRIPTION
1	CRANKSHAFT CASE (RIGHT)
2	BEARING 6202
3	PIN $\Phi 5 \times 10$
4	GASKET
5	OIL SEAL 12*22*7
6	GASKET 8*16*1.2
7	DRIVE PLATE(EASY)
8	STARTER GASKET
9	STARTER (EASY)
10	SCREW M5*20

Area D

NO.	DESCRIPTION
1	GASKET
2	CYLINDER
3	SPARK PLUG (BM6A)
4	SCREW M5*20
5	SCREW M5*12
6	CYLINDER COVER
7	TOP COVER
8	SCREW M5*20

Area E

NO.	DESCRIPTION
1	GASKET
2	MUFFLER
3	SCREW M5*12
4	GASKET RING 6
5	SCREW M6*55
6	MUFFLER COVER
7	SCREW M5*12

Area F

NO.	DESCRIPTION
1	GASKET
2	INTAKE-TUBE
3	SCREW M5*30
4	GASKET
5	CARBURETOR
6	CARBURETOR STANDER
7	SPONGE
8	METAL HOLDER
9	SCREW M5*55
10	SPONGE COVER
11	AIR FILTER COVER
12	SCREW M5*16

Area G

NO.	DESCRIPTION
1	TANK ASSY
2	TANK HOLDER SHOCK REDUCER
3	TANK HOLDER
4	SCREW M5*20
5	TANK LID ASSY
6	TANK PROTECTOR