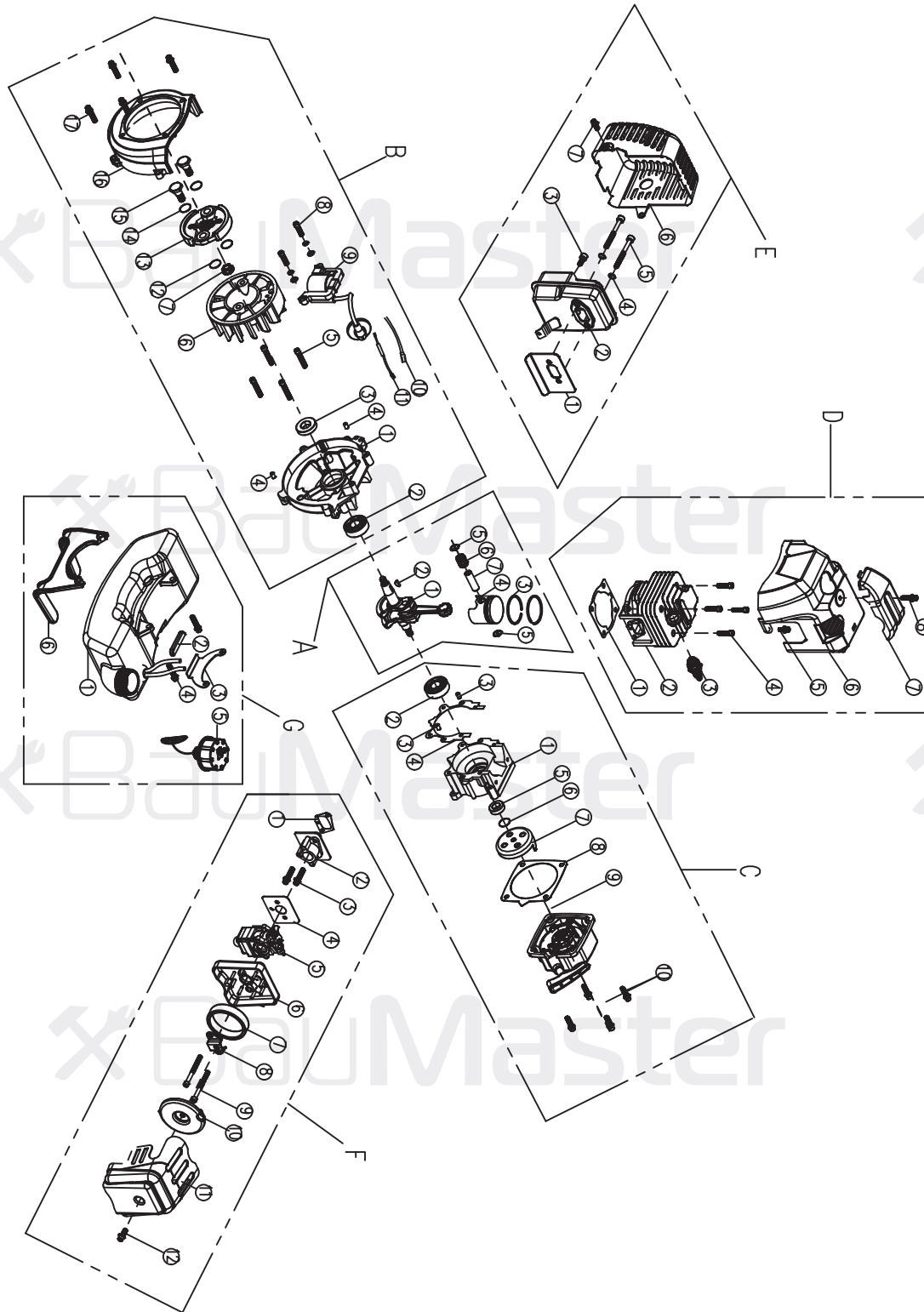


## BT-9052S

NO.	DESCRIPTION	NO.	DESCRIPTION
1	CLUTCH CASE ASSY	18	NYLON CUTTER
2	BELT	19	SCREW M6*30 (BUILT-UP)
3	LIFTING RING(BIG)	20	SCREW M6*25 (BUILT-UP)
4	LIFTING RING(SMALL)	21	SCREW M5*14 (BUILT-UP)
5	SWITCH ASSY	22	SCREW M5*20 (BUILT-UP)
6	LEFT HANDLE	23	NUT M5
7	HANDLE HOLDER(UP)	24	SCREW M5*20
8	HANDLE HOLDER(MIDDLE)	25	SCREW M5*25(BUILT-UP)
9	HANDLE HOLDER(DOWN)	26	SCREW M5*30(BUILT-UP)
10	SHAFT PIPE	27	SCREW M5*20(BUILT-UP)
11	PROTECTOR HOLDER	28	SCREW M6*25(BUILT-UP)
12	GEAR BOX ASSY	29	HANDLE RUBBER
13	3T BLADE	30	CUTTING KNIFE
14	PROTECTOR	31	SCREW ST4.2*8
15	LINK PLATE	32	SWITCH ALU PIPE
16	TRANSMISSION SHAFT	33	LEFT HANDLE ALU PIPE
17	BEARING		

UK-BM20181011

## ЭЛЕКТРОДВИГАТЕЛЬ ДЛЯ ВТ-9052S



### Area A

NO.	DESCRIPTION
1	CRANKSHAFT
2	KEY 3*5*13
3	PISTON RING
4	PISTON
5	PISTON PIN RING
6	BEARING
7	PISTON PIN

### Area B

NO.	DESCRIPTION
1	CRANKSHAFT CASE (LEFT)
2	BEARING 6202
3	OIL SEAL 15*30*7
4	PIN Ø5×10
5	SCREW M5*35
6	FLYING WHEEL
7	NUT M8*1
8	SCREW M5*20
9	COIL
10	GROUND LEAD
11	SHUT DOWN WIRE
12	GASKET 8
13	CLUTCH ASSY
14	GASKET 10
15	SCREW M8*9.8*24
16	SIDE COVER
17	SCREW M5*25
18	SCREW M5*30

### Area C

NO.	DESCRIPTION
1	CRANKSHAFT CASE (RIGHT)
2	BEARING 6202
3	PIN Ø5×10
4	GASKET
5	OIL SEAL 12*22*7
6	GASKET 8*16*1.2
7	DRIVE PLATE(EASY)
8	STARTER GASKET
9	STARTER (EASY)
10	SCREW M5*20

### Area D

NO.	DESCRIPTION
1	GASKET
2	CYLINDER
3	SPARK PLUG (BM6A)
4	SCREW M5*20
5	SCREW M5*12
6	CYLINDER COVER
7	TOP COVER
8	SCREW M5*20

### Area E

NO.	DESCRIPTION
1	GASKET
2	MUFFLER
3	SCREW M5*12
4	GASKET RING 6
5	SCREW M6*55
6	MUFFLER COVER
7	SCREW M5*12

### Area F

NO.	DESCRIPTION
1	GASKET
2	INTAKE-TUBE
3	SCREW M5*30
4	GASKET
5	CARBURETOR
6	CARBURETOR STANDER
7	SPONGE
8	METAL HOLDER
9	SCREW M5*55
10	SPONGE COVER
11	AIR FILTER COVER
12	SCREW M5*16

### Area G

NO.	DESCRIPTION
1	TANK ASSY
2	TANK HOLDER SHOCK REDUCER
3	TANK HOLDER
4	SCREW M5*20
5	TANK LID ASSY
6	TANK PROTECTOR