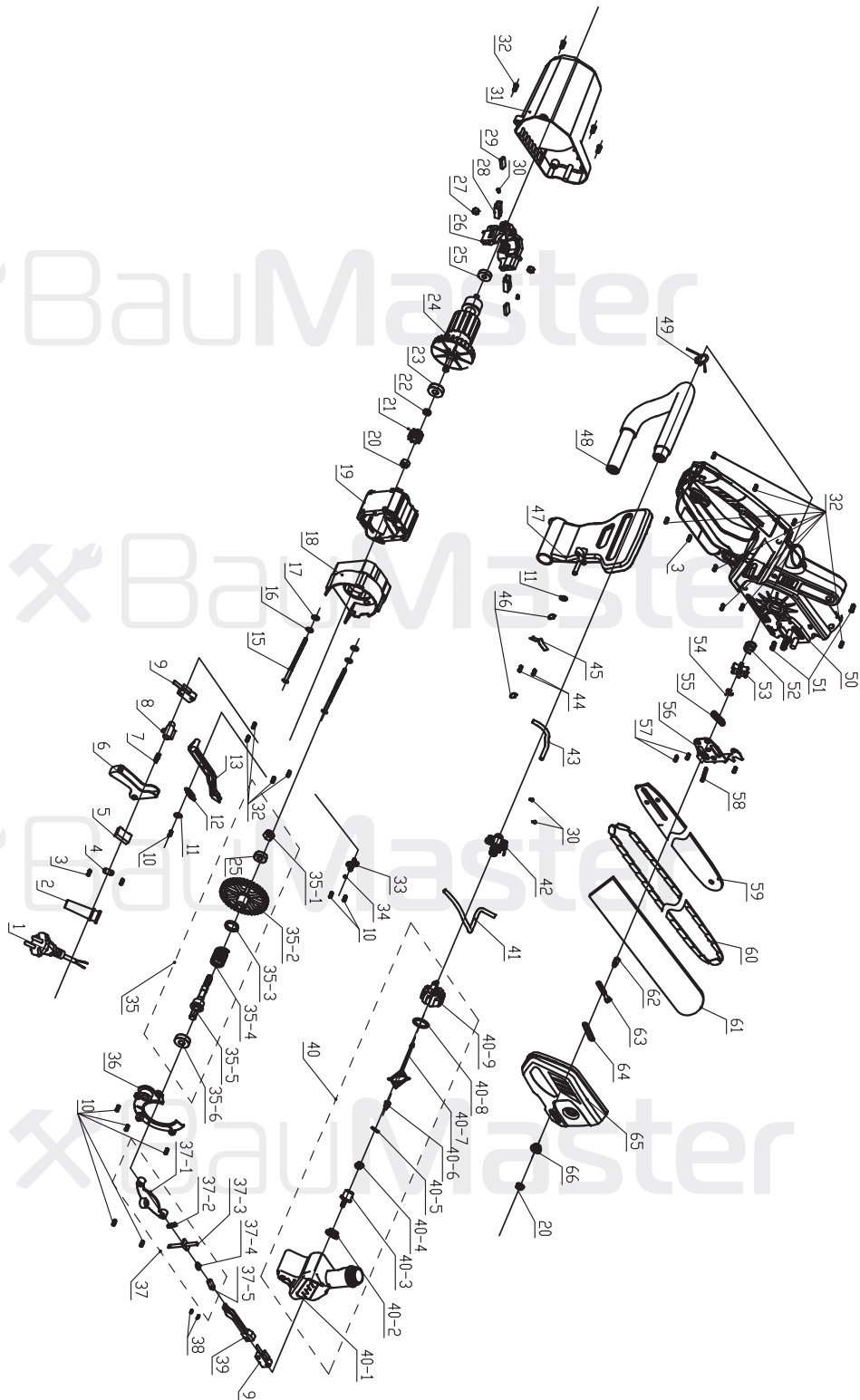


CC-9925BE



NO.	DESCRIPTION	NO.	DESCRIPTION
1	CABLE	37-2	SPRING
2	CABLE PROTECTOR	37-3	BRAKE LEVER
3	SCREW ST4*10	37-4	WASHER Ø5
4	CABLE ANCHORAGE	37-5	PRESSURE PLATE
5	CAPACITOR	38	SCREW ST3*8
6	SWITCH TRIGGER	39	CONNECTING ROD
7	SPRING	40	OIL TANK ASSEMBLY
8	SAFETY LOCKING BUTTON	40-1	OIL TANK
9	SWITCH	40-2	SEALING RING
10	SCREW ST4*12	40-3	FUEL TANK JOINT
11	WASHER Ø4.2XØ16X1	40-4	SPONGE
12	SPRING	40-5	PLUG
13	PUSH ROD	40-6	CHECK VALVE
15	SCREW M4*67	40-7	POTHOOK
16	SPRING WASHER Ø4	40-8	O-RING
17	WASHER Ø4	40-9	OIL TANK COVER
18	MOTOR FRONT BRACKET	41	TUBING 1
19	STATOR	42	OIL PUMP COMPONENTS
20	NUT M8	43	TUBING 2
21	PINION GEAR	44	SCREW ST3*8
22	SHAFT SLEEVE	45	LEAF SPRING
23	BEARING 6000Z	46	CIRCLIP Ø6
24	ROTOR	47	PROTECTIVE PLATE
25	BEARING 608Z	48	AUXILIARY HANDLE
26	MOTOR BACK BRACKET	49	INDUCTOR
27	NUT M4	50	HOUSING
28	BRUSH HOLDER	51	SCREW ST5*30
29	CARBON BRUSH	52	SPRING
30	SCREW ST3*8	53	CHAIN WHEEL
31	REAR COWL	54	CIRCLIP Ø7
32	SCREW ST4*16	55	RUBBER RING
33	OIL NOZZLE	56	BUMPER SPIKE
34	O-RING	57	SCREW ST4*10
35	GEAR ASSEMBLY	58	SCREW ST4*30
35-1	NUT M8	59	GUIDE BAR
35-2	BIG GEAR	60	CHAIN
35-3	SHAFT SLEEVE	61	SCABBARD
35-4	BRAKE TORSION SPRING	62	TENSIONING BLOCK
35-5	OUTPUT SHAFT	63	TENSIONING SCREW M5X45
35-6	BEARING 6000RS	64	RUBBER RING
36	GEAR CASE COVER	65	CHAIN COVER
37	BRAKE LEVER ASSEMBLY	66	LOCATING SLEEVE
37-1	BRAKE FIXING PLATE		