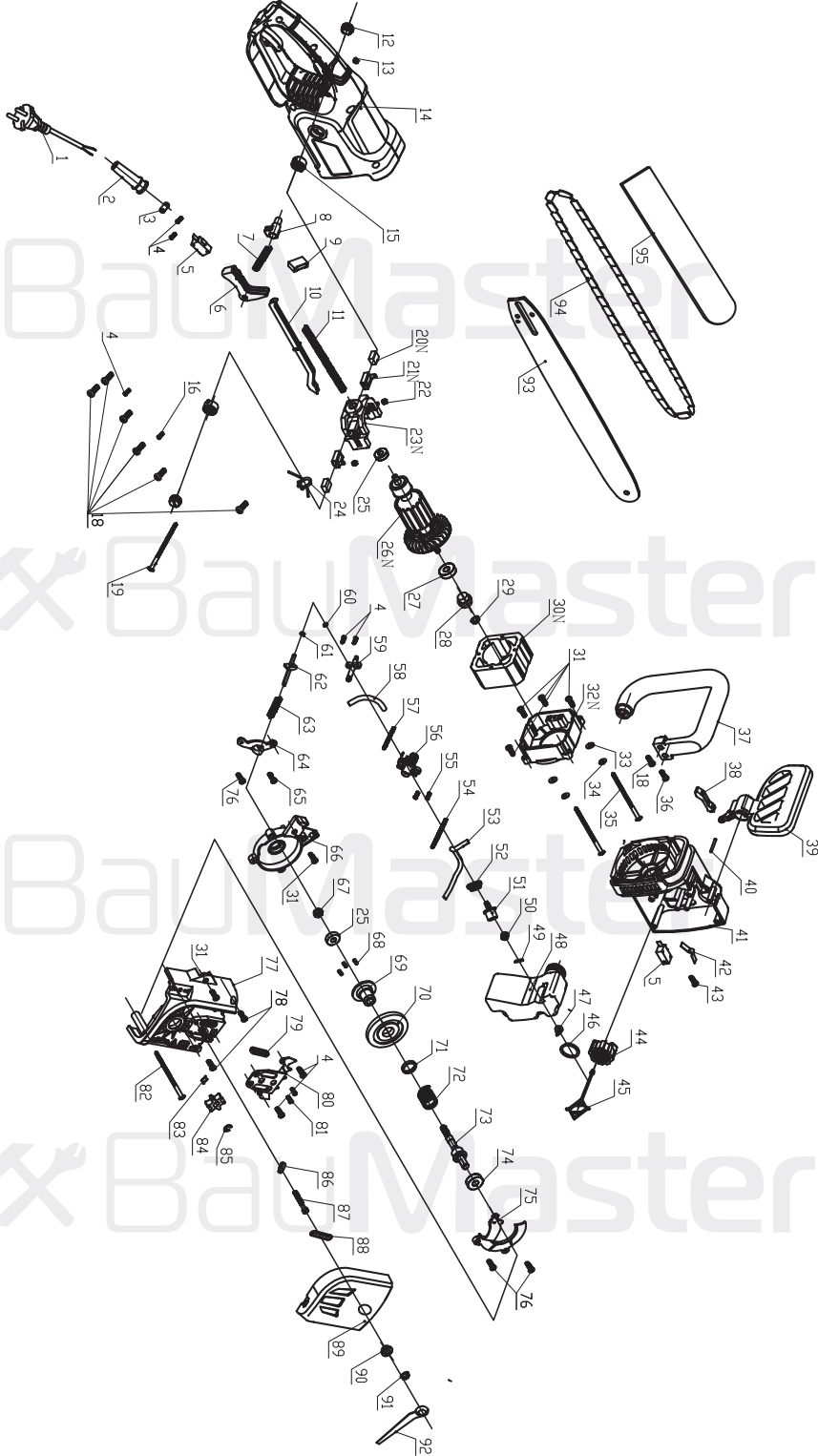


# CC-9928BE



NO.	DESCRIPTION	NO.	DESCRIPTION
1	CABLE	49	PLUG
2	CABLE PROTECTOR	50	SPONGE
3	CABLE ANCHORAGE	51	FUEL TANK JOINT
4	SCREW ST4*12	52	SEALING RING
5	SWITCH	53	TUBING
6	SWITCH TRIGGER	54	SPRING
7	SPRING	55	SCREW ST3*8
8	SAFETY LOCKING BUTTON	56	OIL PUMP COMPONENTS
9	CAPACITOR	57	SPRING
10	PUSH ROD	58	TUBING
11	SPRING	59	OUT OF THE NOZZLE
12	BRUSH CAP	60	O-RING
13	NUT M4	61	WASHER Ø5
14	HANDLE	62	BRAKE LEVER
15	CARBON BRUSH HOLDER	63	SPRING
16	SCREW ST3*12	64	BRAKE FIXING PLATE
18	SCREW ST5*16	65	SCREW ST4*22
19	SCREW M4*70	66	SUPPORT PLATE
20N	CARBON BRUSH	67	NUT M8
21N	BRUSH HOLDER	68	SCREW M4*10
22	NUT M4	69	GEAR MOLD INSERT
23N	MOTOR BACK BRACKET	70	BIG BEVEL GEAR
24	INDUCTOR	71	SHAFT SLEEVE
25	BEARING 608Z	72	BRAKE TORSION SPRING
26N	ROTOR	73	OUTPUT SHAFT
27	BEARING 6000Z	74	BEARING 6000Z
28	SMALL BEVEL GEAR	75	DUST COVER
29	NUT M6	76	SCREW ST4*20
30N	STATOR	77	GEAR BOX COVER
31	SCREW M4*16	78	SCREW ST5*3
32N	MOTOR FRONT BRACKET	79	RUBBER RING
33	WASHER Ø4	80	BUMPER SPIKE
34	SPRING WASHER Ø4	81	SCREW ST4*10
35	NON-STANDARD SCREW M4*65	82	SCREW ST5*70
36	SCREW M5*40	83	SPRING
37	AUXILIARY HANDLE	84	CHAIN WHEEL
38	CONNECTING ROD	85	CIRCLIP Ø7
39	PROTECTIVE PLATE	86	TENSIONING BLOCK
40	PIN Ø3X12	87	TENSIONING SCREW M5X45
41	GEAR BOX	88	RUBBER RING
42	LEAF SPRING	89	CHAIN COVER
43	SCREW ST3*8	90	LOCATING SLEEVE
44	OIL TANK COVER	91	NUT M8
45	POTHOOK	92	WRENCH
46	O-RING	93	GUIDE BAR
47	CHECK VALVE	94	CHAIN
48	OIL TANK	95	SCABBARD