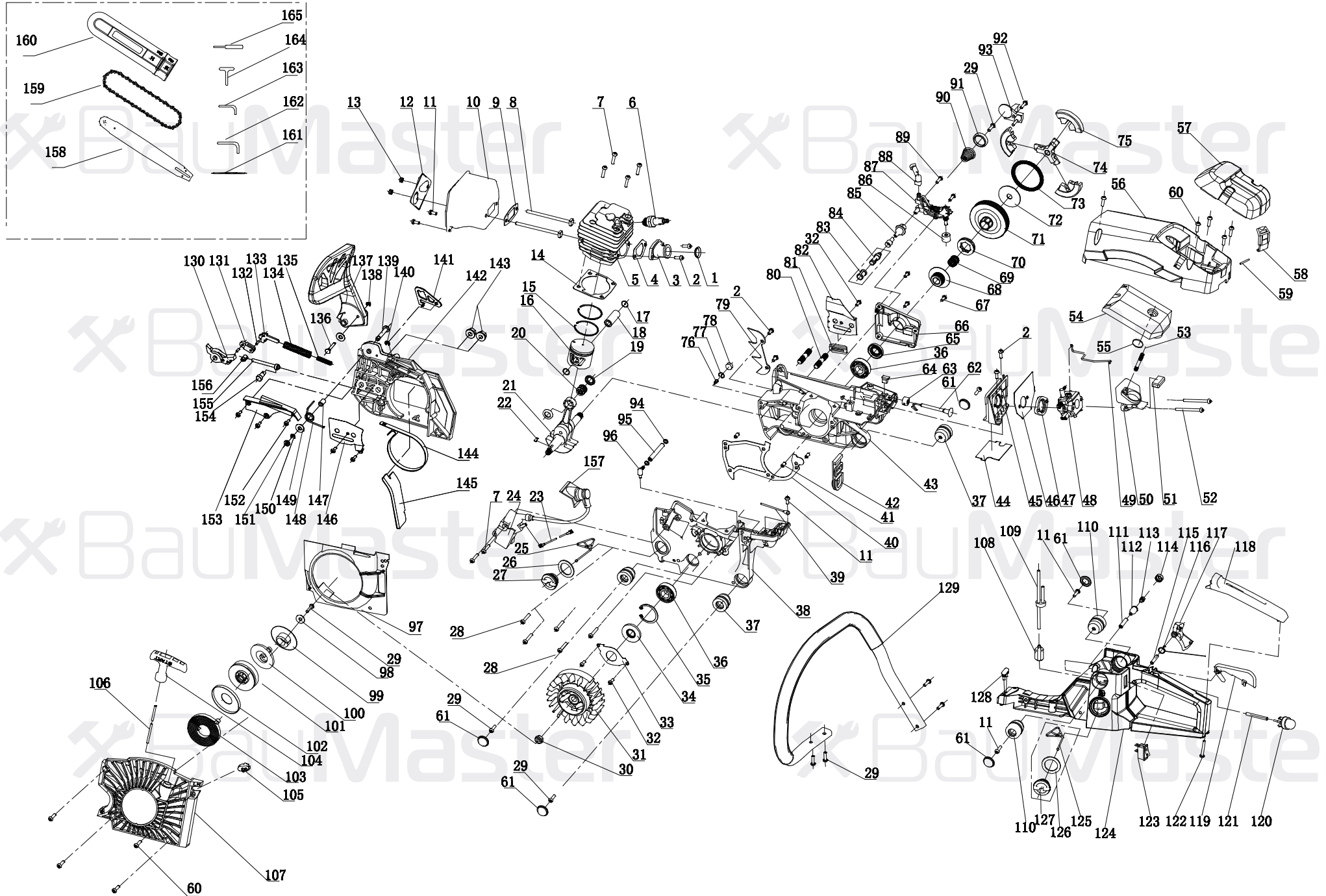


# GC-9952BE



# GC-9952BE

NO.	DESCRIPTION	NO.	DESCRIPTION	NO.	DESCRIPTION
1	RETAINING RING	56	THE UPPER COVER	111	BALANCER SEAT
2	SCREW TX M5*12	57	AIR FILTER COVER	112	BALANCER BODY
3	IN-TAKE TUBE	58	AIR FILTER COVER LOCKER	113	BALANCER VENTILATION MOUTH
4	IN-TAKE MANIFOLD GASKET	59	CYLINDRICAL PINΦ3*30	114	BALANCER COVER
5	CYLINDER BLOCK	60	SCREW TX M5*14	115	CYLINDRICAL PINΦ6*30
6	SPARK PLUG	61	DUST COVER	116	THE TRIGGER SPRING
7	SCREW TX M5*20	62	THROTTLE PULL ROD	117	TRIGGER
8	MUFFLER BOLT M5*85	63	CHOKE ROD DAMPING	118	HANDLE COVER
9	MUFFLER GASKET	64	DAMPER	119	THE TRIGGER CONTROL ARM
10	FUFFLER	65	SEAL Φ15*Φ28*4.5	120	PRIMMER
11	SCREW M5*10	66	THE OIL PUMP COVER	121	FUEL RETURN PIPE
12	MUFFLER COVER	67	SCREW TX M4*8	122	SCREW ST4.8*20
13	NUT M5	68	TURBINE	123	FLAMEOUT SWITCH
14	CYLINDER GASKET	69	BEARINGΦ12*Φ15*14.5	124	FUEL TANK
15	PISTON RING	70	SPROCKET	125	FUEL TANK CAP ANTI FALLING PLATE
16	PISTON	71	CLUTCH HOISING	126	OIL SEAL
17	PISTON PIN	72	CLUTCH WEAR PAD	127	FUEL TANK CAP
18	PISTON PIN CIRCLIP	73	CLUTCH SPRING	128	DAMPING RUBBER
19	BEARNING RETAINER	74	THE HOLDER	129	GRIP
20	HEAD NEEDLE ROLLER BEARINGSΦ11*Φ15*12.5	75	FLY HAMMER	130	THE MAIL LEVER
21	CRANKSHAFT AND CONNECTING ROD	76	AIR NOZZLE	131	AUXILIARY LEVER
22	WOODRUFF KEY 3*10	77	AIR NOZZLE CIRCLIP	132	CYLINDRICAL PIN Φ3*9
23	FLAMEOUT SWITCH LINE	78	AIR NOZZLE SPONGE	133	BRAKE CONTROL LEVER
24	COIL	79	TOOTH PLATE	134	MAIL SPRING
25	OIL FILLER CAP OIL FILM	80	STUD M8*42	135	AUXILIARY SPRING
26	FUEL TANK CAP GASKET	81	CHAIN GUIDE BLOCK	136	LIMITING PIN
27	OIL FILLER CAP	82	OIL OUTLET COVER	137	FRONT BAFFLE
28	SCREW TX M5*30	83	OIL FILTER NETTING	138	CLIP SPRING Φ3
29	SCREW ST4.8*14	84	OIL FILTER	139	FRONT PLATE PIN
30	NUT M8	85	OIL PUMP INLET PIPE	140	CLIP SPRINGΦ4
31	ROTOR	86	DUST FILTER COTTON	141	LIMITING PLATE
32	SCREW TX M4*6	87	OIL PUMP	142	RIGHT SIDE PLATE
33	SEAL BAFFLE	88	OIL PUMP OUTLET PIPE	143	NUT M8
34	SEAL Φ15*Φ35*4.5	89	SCREW TX M4*14	144	BRAKE BAND
35	RING Φ35	90	A TOWER SHAPED SPRING	145	OIL BAFFLE PLATE
36	BEARING 62.2	91	A TOWER SHAPED SPRING SEAT	146	GUIDE PLATE
37	SHOCK ABSORBING SEAT	92	SCREW ST M5*16	147	FRONT BAFFLE CASINGΦ8
38	RIGHT BOX	93	CHAIN BLOCK	148	BRAKE SPRING
39	GROUNDING SWITCH LINE	94	THE NEGATIVE PRESSURE PIPE CLAMP SPRING	149	SHIM Φ6*Φ15*1.5
40	BOX GASKET	95	THE NEGATIVE PRESSURE PIPE	150	CLIP SPRING Φ5
41	POSITIONING PIN Φ5*10	96	NEGATIVE PRESSURE NOZZLE	151	RUBBER RING
42	DUSTPROOF RUBBER BLOCK	97	AIR DEFLECTOR	152	SCREW ST4.2*8
43	LEFT BOX	98	THE ROPE ROUND GASKET Φ5*Φ15*1.5	153	SPRING COVER
44	PLATE(SMALL)	99	SMALL ROPE WHEEL	154	CARD
45	INTAKE PIPE SUPPORT	100	BIG SPRING	155	TENSIONING SCREW
46	PLATE(BIG)	101	BIG ROPE WHEEL	156	TENSIONING BLOCK
47	INTAKE FLANGE	102	START SPRING COVER	157	SPARK PLUG CAP
48	CARBURETOR	103	START SPRING	158	GUIDE BAR
49	THROTTLE ROD	104	STARTER HANDLE	159	CHAIN
50	THE AIR INLET ELBOW	105	LH SHEATH	160	GUIDE BAR COVER
51	SHOCK ABSORBER RUBBER SLEEVE	106	START PULLING ROPE	161	GRATER
52	SCREW TX M5*50	107	STARTER COVER	162	M5 SPANNER
53	STUD M5*38	108	FUEL FILTER	163	M4 SPANNER
54	AIR FILLER	109	FUEL PIPE ASSY	164	SOCKET WRENCH
55	AIR FILLER GASKET	110	LONG DAMPING	165	BOLT DRIVER