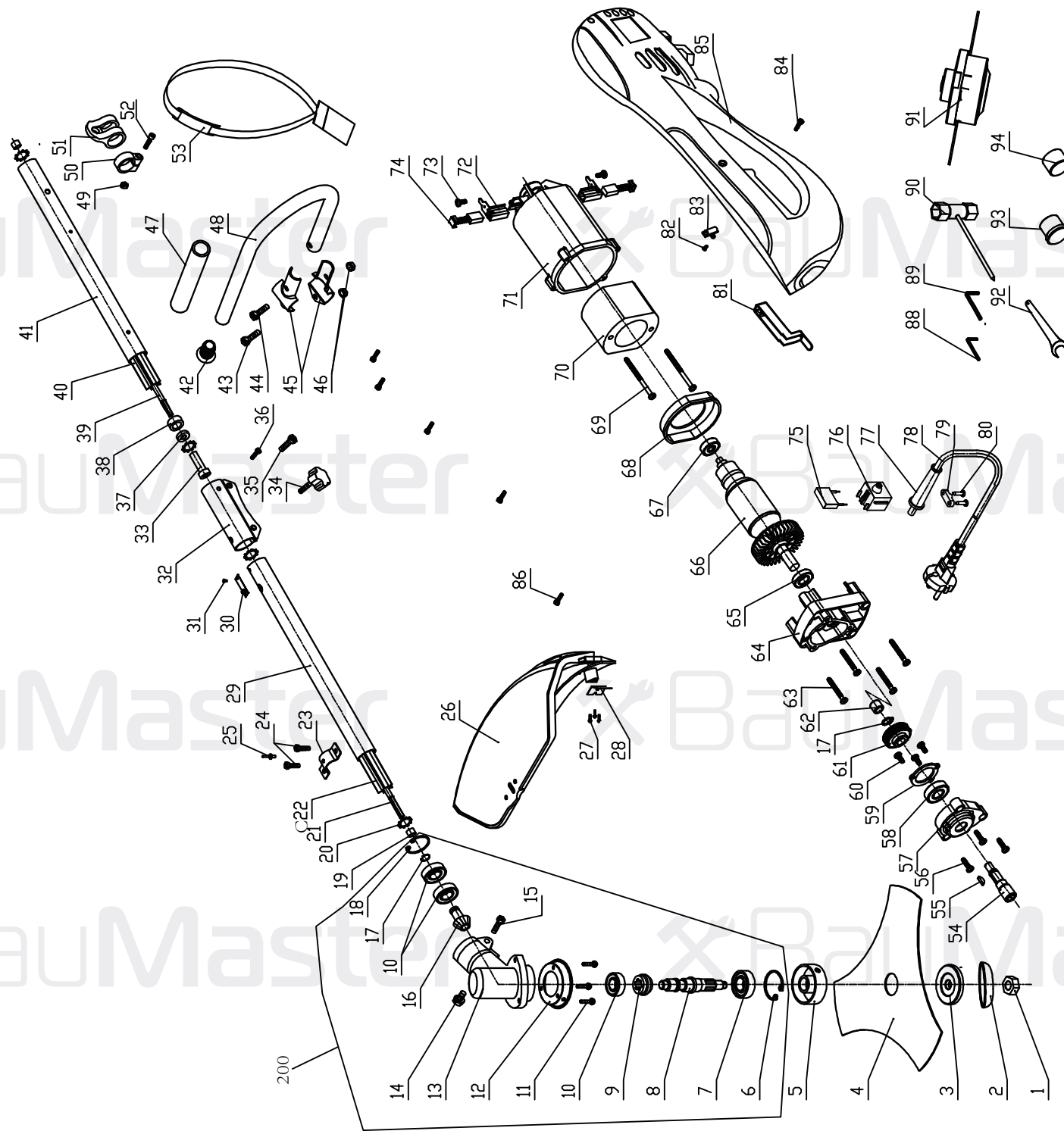


GT-3516



GT-3516

NO.	DESCRIPTION	NO.	DESCRIPTION	NO.	DESCRIPTION
1	left-NUT M10	33	soft shaft bush	65	bearing 6901Z
2	The blade cover	34	locking knob	66	rotor
3	down flange	35	screw M6*20	67	bearing 627Z
4	blade	36	screw M4*10	68	wind guide
5	upper flange	37	Retaining ring	69	Tapping screw ST5*60
6	circlip \varnothing 32	38	screw bush	70	stator
7	bearing 6002Z	39	soft shaft B	71	motor housing
8	spindle	40	plastic tube B	72	carbon brush holder
9	big gear	41	steel tube B	73	Tapping screw ST3*8
10	bearing 6000Z	42	Rubber plug	74	carbon brush
11	screwM5*12	43	screw M6*15	75	capacitor
12	gear box cover	44	screw M6*25	76	Switch
13	gear box	45	handle clmap	77	Cable protector
14	screwM6*12	46	NUT M6	78	Cable
15	screwM5*25	47	sponge tube	79	cable anchorage
16	pinion shaft	48	handle	80	Tapping screw ST4*14
17	circlip \varnothing 10	49	NUT M5	81	switch trigger
18	circlip \varnothing 26	50	strap hook ring	82	Tapping screw ST3*6
19	soft shaft limit set	51	strap hook	83	cabel clamp
20	Retaining ring	52	screw M5*20	84	screw M4*12
21	soft shaft A	53	shoulder strap	85	housing
22	plastic tube A	54	output shaft	86	Tapping screw ST4*16
23	guard press board	55	Woodruff key	88	hex wrench 4mm
24	screwM6*20	56	screw ST4*16	89	hex wrench 5mm
25	rivet \varnothing 4X6	57	gear box cover	90	wrench
26	guard	58	bearing 6001Z	91	spool assembly
27	Tapping screw ST4*8	59	bearing cover	92	spanner
28	blade	60	screw ST4*10	93	Rubber plug
29	steel tube A	61	gear	94	Rubber plug
30	shrapnel	62	needle bearing HK0810	200	Gearbox assembly
31	rivet	63	Tapping screw ST4*35		
32	connect tube	64	gear box		