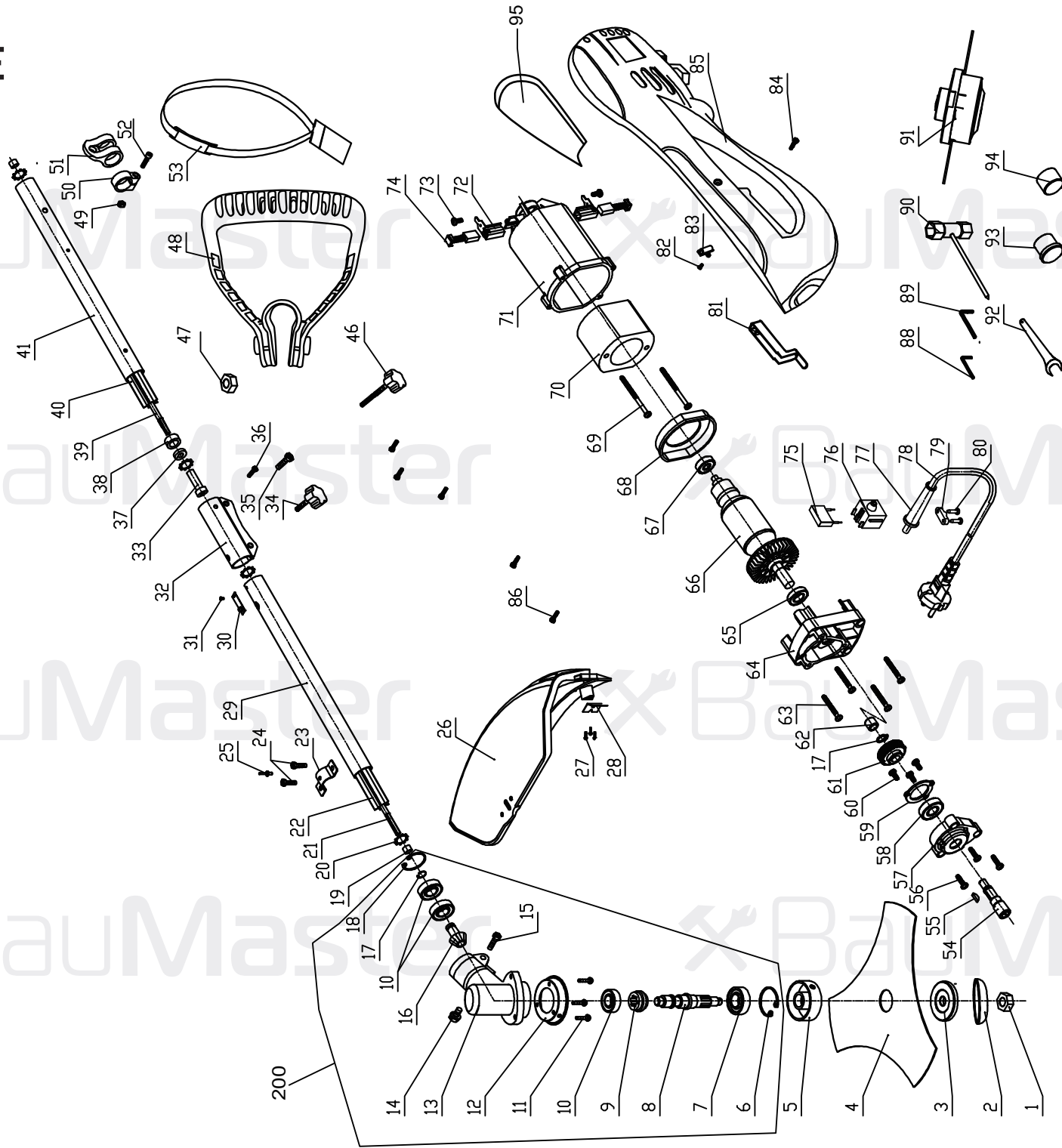


GT-3516BE



GT-3516BE

NO.	DESCRIPTION	NO.	DESCRIPTION	NO.	DESCRIPTION
C1	LEFT-NUT M10	C33	SOFT SHAFT BUSH	C69	TAPPING SCREW ST5*60
C2	THE BLADE COVER	C34	LOCKING KNOB	C70	STATOR
C3	DOWN FLANGE	C35	SCREW M6*20	C71	MOTOR HOUSING
C4	BLADE	C36	SCREW M4*10	C72	CARBON BRUSH HOLDER
C5	UPPER FLANGE	C37	RETAINING RING	C73	TAPPING SCREW ST3*8
C6	CIRCLIP Ø32	C38	SCREW BUSH	C74	CARBON BRUSH
C7	BEARING 6002Z	C39	SOFT SHAFT B	C75	CAPACITOR
C8	SPINDLE	C40	PLASTIC TUBE B	C76	SWITCH
C9	BIG GEAR	C41	STEEL TUBE B	C77	CABLE PROTECTOR
C10	BEARING 6000Z	D46	SCREW	C78	CABLE
C11	SCREWM5*12	D47	NUT	C79	CABLE ANCHORAGE
C12	GEAR BOX COVER	D48	HANDLE	C80	TAPPING SCREW ST4*14
C13	GEAR BOX	C49	NUT M5	C81	SWITCH TRIGGER
C14	SCREWM6*12	C50	STRAP HOOK RING	C82	TAPPING SCREW ST3*6
C15	SCREWM5*25	C51	STRAP HOOK	C83	CABEL CLAMP
C16	PINION SHAFT	C52	SCREW M5*20	C84	SCREW M4*12
C17	CIRCLIP Ø10	C53	SHOULDER STRAP	D85	HOUSING
C18	CIRCLIP Ø26	C54	OUTPUT SHAFT	C86	TAPPING SCREW ST4*16
C19	SOFT SHAFT LIMIT SET	C55	WOODRUFF KEY	C88	HEX WRENCH 4MM
C20	RETAINING RING	C56	SCREW ST4*16	C89	HEX WRENCH 5MM
C21	SOFT SHAFT A	D57	GEAR BOX COVER	C90	WRENCH
C22	PLASTIC TUBE A	C58	BEARING 6001Z	C91	SPOOL ASSEMBLY
C23	GUARD PRESS BOARD	C59	BEARING COVER	C92	SPANNER
C24	SCREWM6*20	C60	SCREW ST4*10	C93	RUBBER PLUG
C25	RIVET Ø4X6	C61	GEAR	C94	RUBBER PLUG
C26	GUARD	C62	NEEDLE BEARING HK0810	C200	GEARBOX ASSEMBLY
C27	TAPPING SCREW ST4*8	C63	TAPPING SCREW ST4*35	95	SOFT LEATHER
C28	BLADE	D64	GEAR BOX		
C29	STEEL TUBE A	C65	BEARING 6901Z		
C30	SHRAPNEL	C66	ROTOR		
C31	RIVET	C67	BEARING 627Z		
C32	CONNECT TUBE	C68	WIND GUIDE		

GT-3516BE-EX-UK240829GT