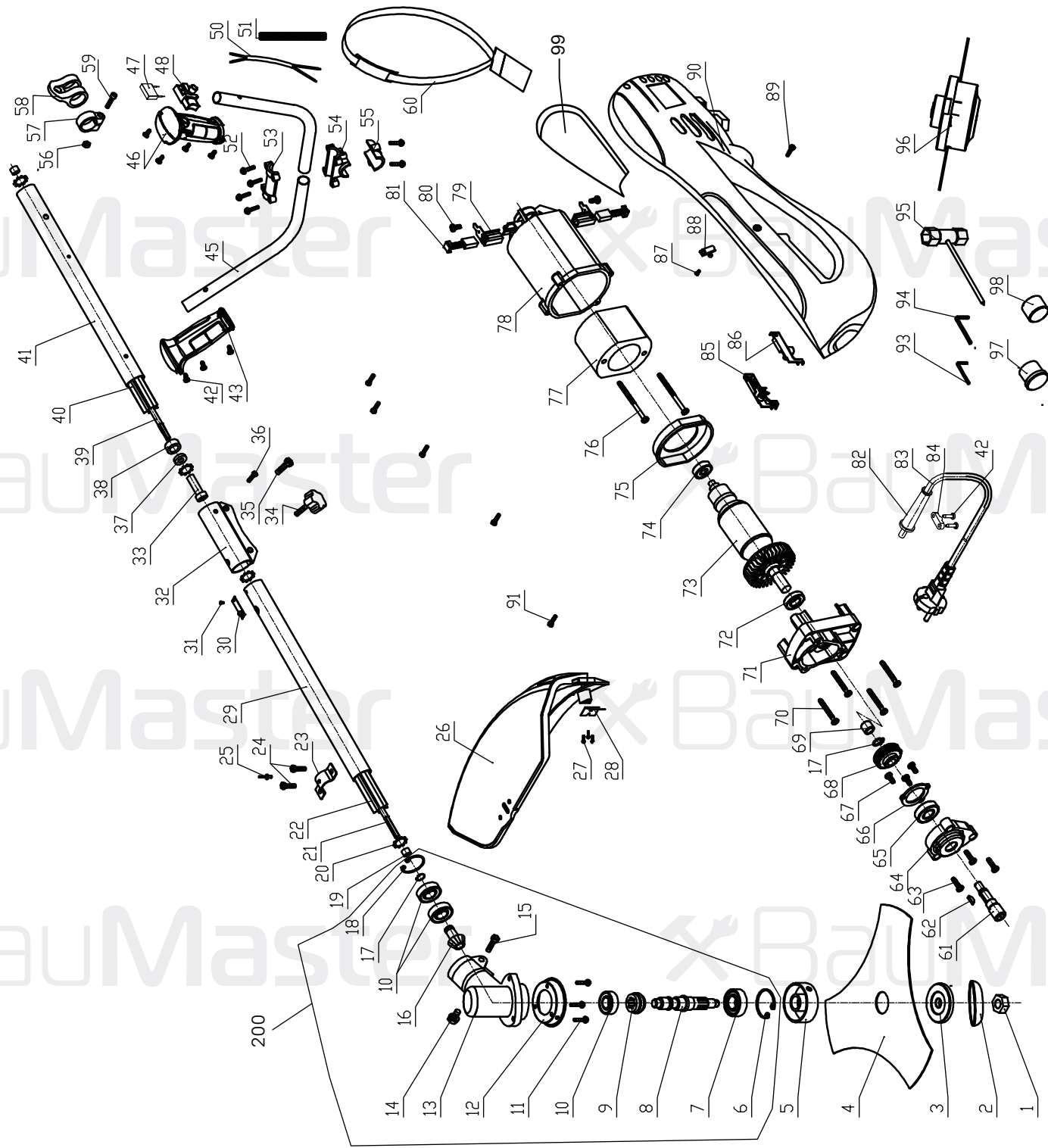


GT-3518BE



GT-3518BE

| NO. | DESCRIPTION | NO. | DESCRIPTION | NO. | DESCRIPTION |
|-----|----------------------|-----|-----------------------------|-----|-----------------------|
| 1 | LEFT-NUT M10 | 34 | LOCKING KNOB | 69 | NEEDLE BEARING HK0810 |
| 2 | THE BLADE COVER | 35 | SCREW M6*20 | 70 | TAPPING SCREW ST4*35 |
| 3 | DOWN FLANGE | 36 | SCREW M4*10 | 71 | GEAR BOX |
| 4 | BLADE | 37 | RETAINING RING | 72 | BEARING 6901Z |
| 5 | UPPER FLANGE | 38 | SCREW BUSH | 73 | ROTOR |
| 6 | CIRCLIP Ø32 | 39 | SOFT SHAFT B | 74 | BEARING 627Z |
| 7 | BEARING 6002Z | 40 | PLASTIC TUBE B | 75 | WIND GUIDE |
| 8 | SPINDLE | 41 | STEEL TUBE B | 76 | TAPPING SCREW ST5*60 |
| 9 | BIG GEAR | 42 | TAPPING SCREW ST4*14 | 77 | STATOR |
| 10 | BEARING 6000Z | 43 | HANDLE | 78 | MOTOR HOUSING |
| 11 | SCREWM5*12 | 45 | STEEL TUBE | 79 | CARBON BRUSH HOLDER |
| 12 | GEAR BOX COVER | 46 | HANDLE | 80 | TAPPING SCREW ST3*8 |
| 13 | GEAR BOX | 47 | CAPACITOR | 81 | CARBON BRUSH |
| 14 | SCREWM6*12 | 48 | SWITCH | 82 | CABLE PROTECTOR |
| 15 | SCREWM5*25 | 50 | SPRING CABLE | 83 | CABLE |
| 16 | PINION SHAFT | 51 | SPRING CABLE TUBE | 84 | CABLE ANCHORAGE |
| 17 | CIRCLIP Ø10 | 52 | SCREW M6*25 | 85 | RIGHT HOUSING CAP |
| 18 | CIRCLIP Ø26 | 53 | STEEL TUBE PRESS BOARD | 86 | LIFT HOUSING CAP |
| 19 | SOFT SHAFT LIMIT SET | 54 | STEEL TUBE BASE | 87 | TAPPING SCREW ST3*6 |
| 20 | RETAINING RING | 55 | STEEL TUBE BASE PRESS BOARD | 88 | CABLE CLAMP |
| 21 | SOFT SHAFT A | 56 | NUT M5 | 89 | SCREW M4*12 |
| 22 | PLASTIC TUBE A | 57 | STRAP HOOK RING | 90 | HOUSING |
| 23 | GUARD PRESS BOARD | 58 | STRAP HOOK | 91 | TAPPING SCREW ST4*14 |
| 24 | SCREWM6*20 | 59 | SCREW M5*20 | 93 | HEX WRENCH 4MM |
| 25 | RIVET Ø4X6 | 60 | SHOULDER STRAP | 94 | HEX WRENCH 5MM |
| 26 | GUARD | 61 | OUTPUT SHAFT | 95 | WRENCH |
| 27 | BLADE | 62 | WOODRUFF KEY | 96 | SPOOL ASSEMBLY |
| 28 | TAPPING SCREW ST4*8 | 63 | SCREW ST4*16 | 97 | RUBBER PLUG |
| 29 | STEEL TUBE A | 64 | GEAR BOX COVER | 98 | RUBBER PLUG |
| 30 | SHRAPNEL | 65 | BEARING 6001Z | 99 | SOFT LEATHER |
| 31 | RIVET | 66 | BEARING COVER | 200 | GEAR BOX ASSEMBLY |
| 32 | CONNECT TUBE | 67 | SCREW ST4*10 | | |
| 33 | SOFT SHAFT BUSH | 68 | GEAR | | |

GT-3518BE-EX-UK240829GT