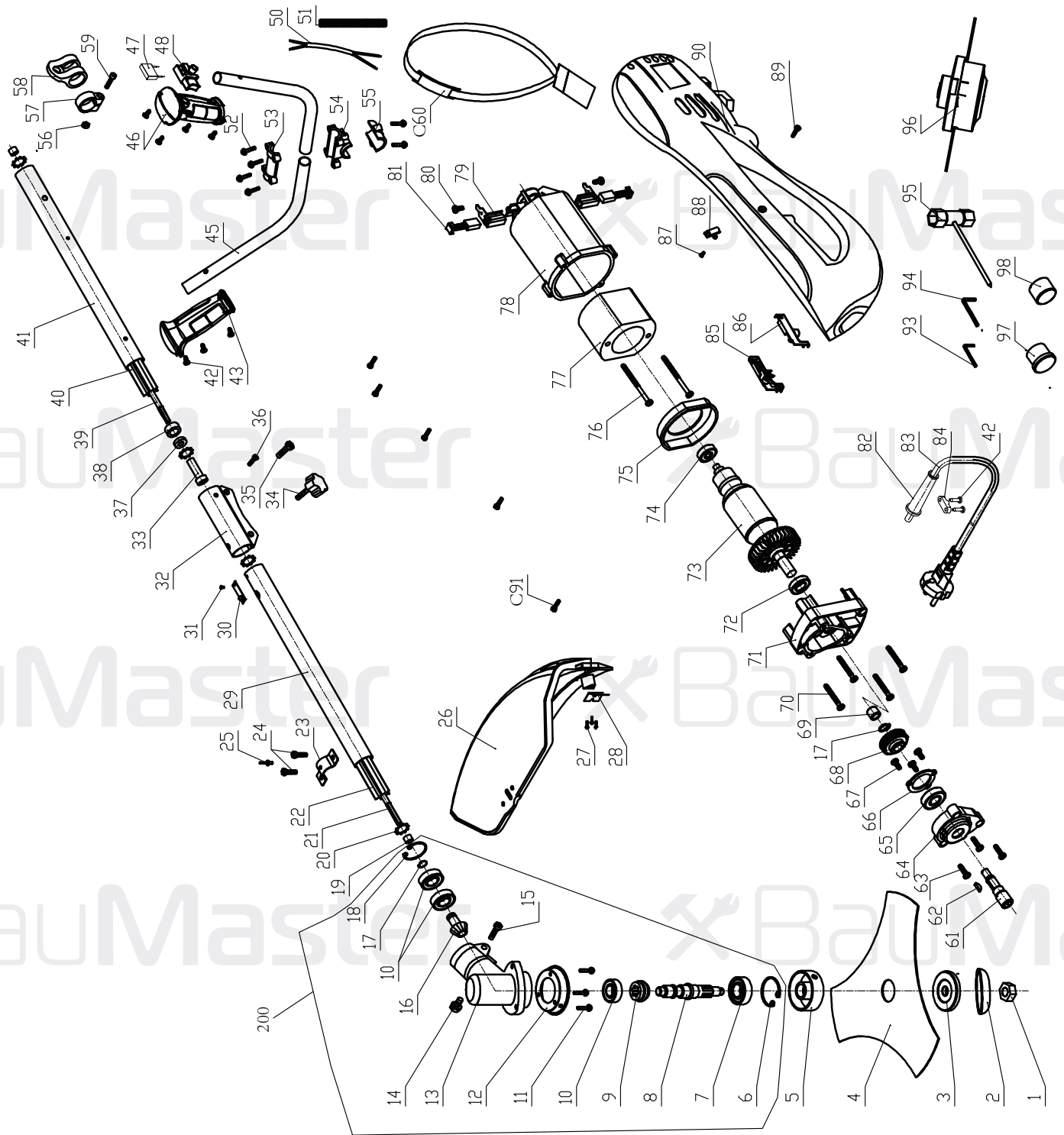


GT-3526



GT-3526

NO.	DESCRIPTION	NO.	DESCRIPTION	NO.	DESCRIPTION
1	left-NUT M10	34	locking knob	69	needle bearing HK0810
2	The blade cover	35	screw M6*20	70	Tapping screw ST4*35
3	down flange	36	screw M4*10	71	gear box
4	blade	37	Retaining ring	72	bearing 6901Z
5	upper flange	38	screw bush	73	rotor
6	circlip \varnothing 32	39	soft shaft B	74	bearing 627Z
7	bearing 6002Z	40	plastic tube B	75	wind guide
8	spindle	41	steel tube B	76	Tapping screw ST5*60
9	big gear	42	Tapping screw ST4*14	77	stator
10	bearing 6000Z	43	handle	78	motor housing
11	screwM5*12	45	steel tube	79	carbon brush holder
12	gear box cover	46	handle	80	Tapping screw ST3*8
13	gear box	47	capacitor	81	carbon brush
14	screwM6*12	48	Switch	82	Cable protector
15	screwM5*25	50	Spring cable	83	Cable
16	pinion shaft	51	spring cable tube	84	cable anchorage
17	circlip \varnothing 10	52	screw M6*25	85	right housing cap
18	circlip \varnothing 26	53	steel tube press board	86	lift housing cap
19	soft shaft limit set	54	steel tube base	87	Tapping screw ST3*6
20	Retaining ring	55	steel tube base press board	88	cable clamp
21	soft shaft A	56	NUT M5	89	screw M4*12
22	plastic tube A	57	strap hook ring	90	housing
23	guard press board	58	strap hook	91	Tapping screw ST4*14
24	screwM6*20	59	screw M5*20	93	hex wrench 4mm
25	rivet \varnothing 4X6	60	shoulder strap	94	hex wrench 5mm
26	guard	61	output shaft	95	wrench
27	blade	62	Woodruff key	96	spool assembly
28	Tapping screw ST4*8	63	screw ST4*16	97	Rubber plug
29	steel tube A	64	gear box cover	98	Rubber plug
30	shrapnel	65	bearing 6001Z	200	Gear box assembly
31	rivet	66	bearing cover		
32	connect tube	67	screw ST4*10		
33	soft shaft bush	68	gear		