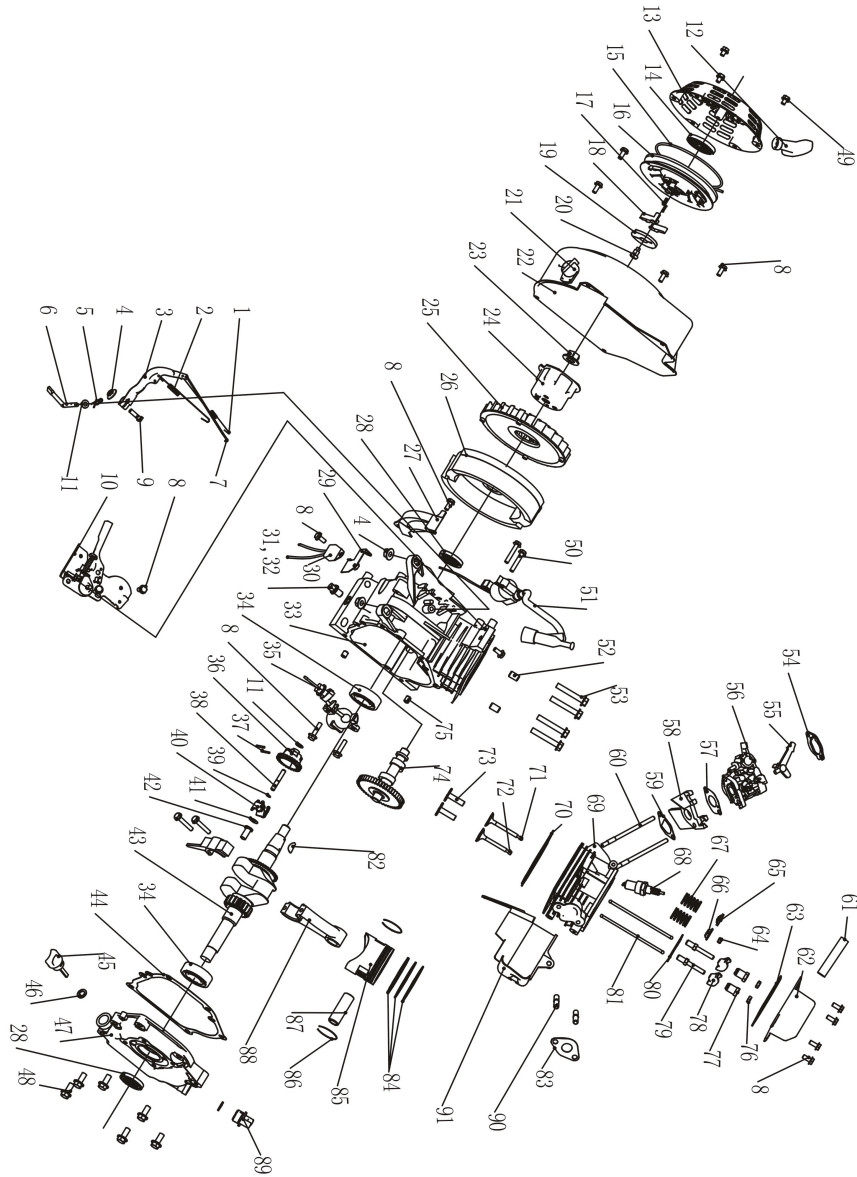


## PG-87124X

|    |                                 |        |                                |
|----|---------------------------------|--------|--------------------------------|
| 1  | oil level gage                  | 32     | engine assembly                |
| 2  | screw (5*10MM)                  | 33、 39 | panel                          |
| 3  | fuel tank cap                   | 34     | larpmp +,-                     |
| 4  | gasket of fuel tank cap         | 35     | fuse                           |
| 5  | fuel filter                     | 36     | overload protector(2.0KW)      |
| 6  | fuel tank (15L)                 | 37     | voltmeter                      |
| 7  | screw of fuel tank              | 38     | ON/OFF switch (recoil starter) |
| 8  | shock gasket of fuel tank       | 40     | shokproof foot                 |
| 9  | fuel control valve              | 41     | screw(M8)                      |
| 10 | fuel pipe                       | 42     | bottom rubber                  |
| 11 | liner of muffler                | 43     | frame (2.0kw)                  |
| 12 | screw of muffler (M6*12, M8*16) | 44     | screw of muffler cover(M6*12)  |
| 13 | screw of muffler (M6*12, M8*16) | 45     | 168 muffler cover              |
| 14 | muffler bracket                 | 46     | lever carburetor               |
| 15 | bracket(carbon brushes)         | 47     | 168 gasket of carburetor       |
| 16 | real cover                      | 48     | 168 carburetor                 |
| 17 | screw of real tank              | 49     | 168 high voltage set           |
| 18 | terminal                        | 50     | insulator carburetor           |
| 19 | screw (5*12MM)                  | 51     | 168 plate of air clerner       |
| 20 | screw of AVR (M5*12)            | 52     | 168 gasket of air cleaner      |
| 21 | AVR (2.0kw)                     | 53     | 168 inner core of air cleaner  |
| 22 | bracket                         | 54     | 168 air cleaner filter         |
| 23 | screw of bracket (M6*130)       | 55     | 168 cover of air clerner       |
| 24 | alternator                      | 56     | 168 panel cover                |

## ENGINE FOR PG-87124X



| No. | DESCRIPTION                  | No. | DESCRIPTION                       | No. | DESCRIPTION             |
|-----|------------------------------|-----|-----------------------------------|-----|-------------------------|
| 1   | 168 THROTTLE RETURN SPRING   | 41  | 168 GOVERNOR SHAFT WASHER         | 81  | 168 PUSH ROD            |
| 2   | 168 GOVERNOR SPRING          | 42  | 168 GOVERNOR COVER                | 82  | 168 KEY                 |
| 3   | 168 GOVERNOR ARM             | 43  | 168 CRANKSHAFT COMP               | 83  | 168 MUFFLER PACKING     |
| 4   | 168 NUT M6                   | 44  | 168 CASE OVER PACKING             | 84  | 168 FIRST RING SET      |
| 5   | 168 LOCK PIN                 | 45  | 168 OIL FILLER CAP ASSEMBLY       |     | 168 SECOND RING SET     |
| 6   | 168 GOVERNOR ARM SHAFT       | 46  | 168 OIL FILLER CAP PACKING        |     | 168 RING COMP           |
| 7   | 168 GOVERNOR ROD             | 47  | 168 CRANKCASE COVER               | 85  | 168 PISTON              |
| 8   | 168 FLANGE BOLT M6*12        | 48  | 168 FLANGE BOLT 8*32              | 86  | 168 PISTON PIN CLIP     |
| 9   | 168 GOVERNOR ARM BOLT        | 49  | 168 FLANGE BOLT 6*8               | 87  | 168 PISTON PIN          |
| 10  | 168 CONTROL ASSEMBLY         | 50  | 168 FLANGE BOLT 6*25              | 88  | 168 CONNECTING ROD COMP |
| 11  | 168 GOVERNOR WASHER          | 51  | 168 IGNITOR                       | 89  | 168 OIL FILLER CAP      |
| 12  | 168 RECOIL STARTER KNOB      | 52  | 168 DOWEL PIN 10*16               | 90  | 168 STUD BOLT           |
| 13  | 168 RECOIL STARTER COMP      | 53  | 168 FLANGE BOLT 8*55              | 91  | 168 SHROUD COMP         |
| 14  | 168 RECOIL STARTER SPRING    | 54  | 168 CARBURETOR WASHER             |     |                         |
| 15  | 168 RECOIL STARTER ROPE      | 55  | 168 CHOKE LEVEL COMP              |     |                         |
| 16  | 168 RECOIL STARTER REEL      | 56  | 168 CARBURETOR ASSEMBLY           |     |                         |
| 17  | 168 RETURN SPRING            | 57  | 168 CARBURETOR PACKING            |     |                         |
| 18  | 168 STARTER RATCHET          | 58  | 168 CARBURETOR INSULATOR          |     |                         |
| 19  | 168 RATCHET GUIDE            | 59  | 168 INSULATOR PACKING             |     |                         |
| 20  | 168 SETTING SCREW            | 60  | 168 STUD BOLT 6*113               |     |                         |
| 21  | 168 SWITCH                   | 61  | 168 BREATHER TUBE                 |     |                         |
| 22  | 168 FAN COVER COMP           | 62  | 168 HEAD OVER COMP                |     |                         |
| 23  | 168 NUT M14                  | 63  | 168 HEAD OVER PACKING             |     |                         |
| 24  | 168 START HUB                | 64  | 168 VALVE ROTATOR                 |     |                         |
| 25  | 168 COOLING FAN              | 65  | 168 INTAKE VALVE SPRING RETAINER  |     |                         |
| 26  | 168 FLY WHEEL                | 66  | 168 EXHAUST VALVE SPRING RETAINER |     |                         |
| 27  | 168 SIDE PLACE               | 67  | 168 VALVE SPRING                  |     |                         |
| 28  | 168 OIL SEAL                 | 68  | 168 SPARK PLUG                    |     |                         |
| 29  | 168 DIODE BASE COMP          | 69  | 168 CYLINDER HEAD COMP            |     |                         |
| 30  | 168 DIODE COMP               | 70  | 168 CYLINDER HEAD GASKET          |     |                         |
| 31  | 168 DRAIN PLUG BOLT          | 71  | 168 INTAKE VALVE                  |     |                         |
| 32  | 168 DRAIN BOLT WASHER        | 72  | 168 EXHAUST VALVE                 |     |                         |
| 33  | 168 CRANKCASE                | 73  | 168 VALVE LIFTER                  |     |                         |
| 34  | 168 RADIAL BALL BEARING 6205 | 74  | 168 CAMSHAFT ASSEMBLY             |     |                         |
| 35  | 168 OIL LEVEL SWITCH ASSY    | 75  | 168 DOWEL PIN 8*14                |     |                         |
| 36  | 168 GOVERNOR WEIGHT HOLDER   | 76  | 168 PIVOT ADJUSTING NUT           |     |                         |
| 37  | 168 GOVERNOR WEIGHT PIN      | 77  | 168 ROCKER ARM PIVOT              |     |                         |
| 38  | 168 GOVERNOR SHAFT           | 78  | 168 VALVE ROCKER ARM              |     |                         |
| 39  | 168 GOVERNOR HOLDER CLIP     | 79  | 168 PIVOT BOLT                    |     |                         |
| 40  | 168 GOVERNOR WEIGHT          | 80  | 168 PUSH ROD GUIDE PLATE          |     |                         |