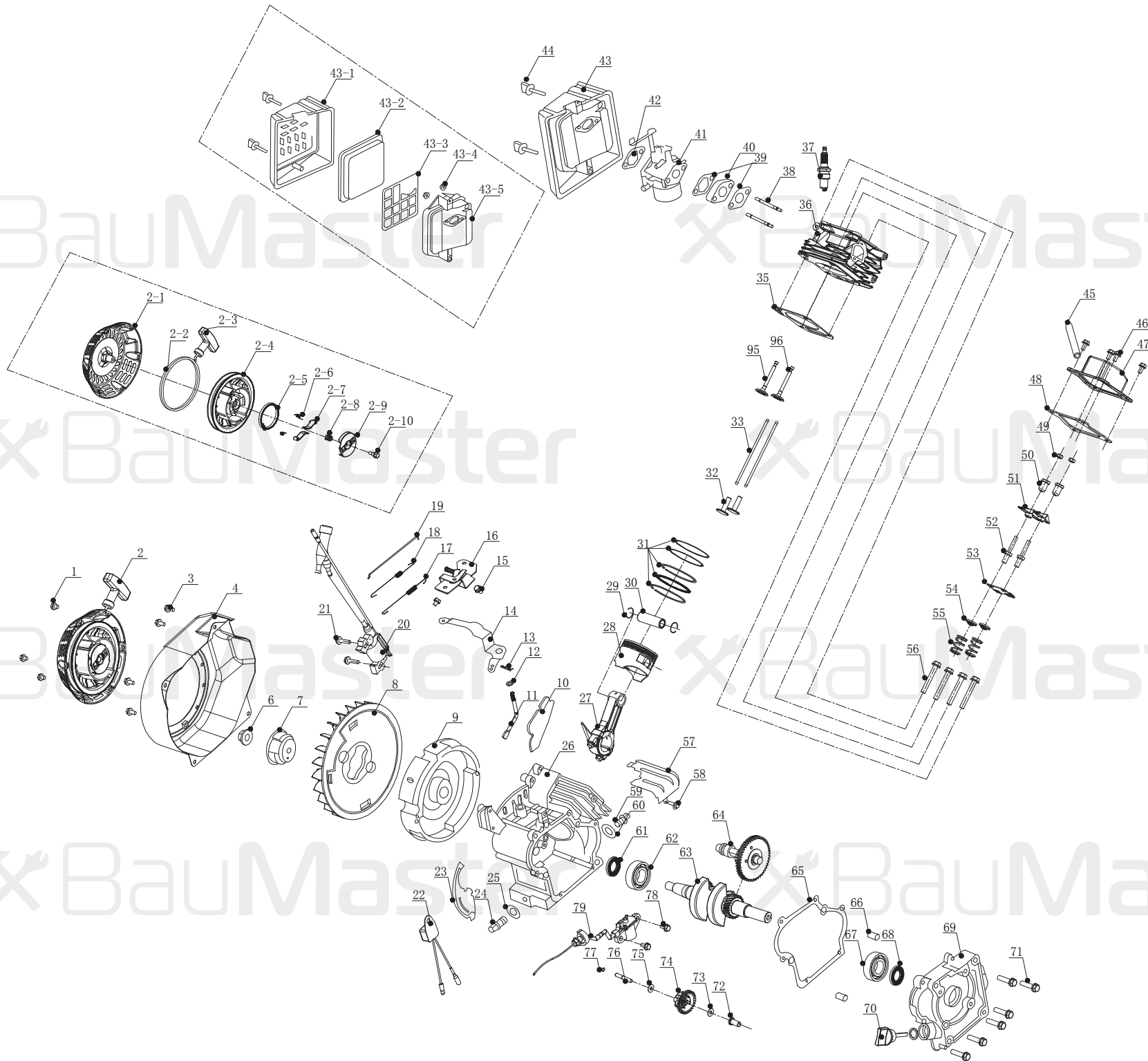


PG-87151X

NO.	DESCRIPTION	NO.	DESCRIPTION
1	FUEL TANK COVER	30	MOTOR REAR COVER
2	FUEL TANK SEAL	37	BOLT
3	FILTER SCREEN	38	FLAT WAHSER
4	NUT	39	HEX. FLANGE BOLT
5	HEX. FLANGE BOLT	40	BACK COVER
6	FLAT WASHER	41	HEX. FLANGE BOLT
8	FUEL TANK CUSHION	44	PANEL
9	FUEL TANK	45	BREAKER
10	FUEL TANK SWITCH FILTER SCREEN	49	VOLTMETER
11	FUEL TANK SWITCH SEAL	50	AC PROTECTOR
12	NUT	51	DC PROTECTOR
13	FUEL TANK SWITCH ASSEMBLY	54	EURO STYLE SOCKET
14	FUEL PIPE CLAMP	55	NUT
15	FUEL PIPE	56	SPRING WASHER
16	FLAME	57	FLAT WAHSER
17	ENGINE	58	HEX. FLANGE BOLT
18	CRANKCASE COVER (HIGH)	60	INDICATOR LAMP
19	TERMINAL	62	PANEL REAR COVER
20	MUFFLER SEAL	63	CAPACITOR
21	MUFFLER ASSEMBLY	64	NUT
22	SPRING WASHER	65	CUSHION PAD (LEFT)
23	NUT	66	FLAT WAHSER
24	FUEL LEVEL GAUGE	67	SPRING WASHER
25	ELECTRICAL BRIDGE(12V)	68	CUSHION PAD (RIGHT)
27	HEX. FLANGE BOLT	69	FLAME STAND
28	ROTOR	70	FLAT WAHSER
29	STATOR WINDING	71	NUT

RU-BM20140825

BauMaster



ЭЛЕКТРОДВИГАТЕЛЬ ДЛЯ PG-87151X

NO.	DESCRIPTION	NO.	DESCRIPTION
1	HEX. FLANGE BOLT	50	VALVE ARM NUT
2	RECOIL STARTER ASSEMBLY	51	VALVE ARM
3	HEX. FLANGE BOLT	52	BOLT
4	FAN COVER	53	LEVER BRACKET
6	NUT	54	VALVE SPRING BAS
7	STARTER COVER	55	VALVE SPRING
8	FAN	56	BOLT
9	FLY WHEEL	57	WIND SCOOPER
10	WINDPROOF PLATE	58	NUT FOR WIND SCOOPER
11	GOVERNOR ROD CLAMP	59	OIL DRAIN BOLT
12	WASHER	60	OIL DRAIN BOLT WASHER
13	CLIP(GOVEMOR ARM SHAFT)	61	OIL SEAL
14	GOVERNOR ARM	62	BEARING 6203
15	HEX. FLANGE BOLT	63	CRANK
16	GOVERNOR BASE ASSY	64	CAMSHAFT ASSY
17	RESET SPRING	65	CRANKCASE PAPER WASHER
18	TRIMMING SPEED SPRING	66	CRANKCASE POSITION PIN
19	GOVERNOR ROD	67	BEARING 6303
20	IGNITION COIL ASSY	68	OIL SEAL
21	HEX. FLANGE BOLT	69	CRANKCASE COVER
22	ONE-WAY CONDUCTOR ASSY	70	OIL LEVEL CAP ASSEMBLY
23	FLY WHEEL GUARD	71	HEX. FLANGE BOLT
24	OIL DRAIN BOLT	72	SPEED ADJUSTING SHAFT BUSH
25	OIL DRAIN BOLT WASHER	73	WASHER
26	CRANKCASE	74	SPEED GEAR ASSY
27	CONNECTION ROD ASSY	75	WASHER
28	PISTON	76	SPEED ADJUSTING SHAFT
29	PISTON PIN CIRCLIP	77	CIRCLIP FOR SPEED ADJUSTING SHAFT
30	PISTON PIN	78	HEX. FLANGE BOLT
31	PISTON RING ASSY	79	OIL SENSOR ASSY
32	LIFTER	43-1	FILTER COVER
33	LEVER ASSEMBLY	43-2	AIR CLEANER ELEMENT
35	CYLINDER HEAD SEAL GASKET	43-3	HOLD RACK
36	CYLINDER HEAD	43-4	NUT
37	SPARK PLUG	43-5	FILTER SEAT
38	STUD BOLT	2-1	RECOIL STARTER CASE
39	CARBURETOR WASHER	2-2	STARTER STRING
40	CARBURETOR HEAT INSULATOR	2-3	HANDLE STARTER
41	CARBURETOR ASSEMBLY	2-4	DRUM WHEEL
42	(IN)CARBURETOR WASHER	2-5	PAWLING SPRING
43	AIR FILTER ASSEMBLY	2-6	RACHET SPRING
44	BOLT	2-7	RACHET
45	RIGHT-ANGLE WASTE PIPE	2-8	HOLD-DOWN PLATE SPRING
46	FLANGE BOLT	2-9	HOLD-DOWN PLATE
47	CYLINDER HEAD COVER	2-10	SCREW
48	CYLINDER HEAD SEAL	95	INTAKE VALVE
49	VALVE CLEARANCE ADJUSTING NUT	96	EXHAUST VALVE

RU-BM20140825