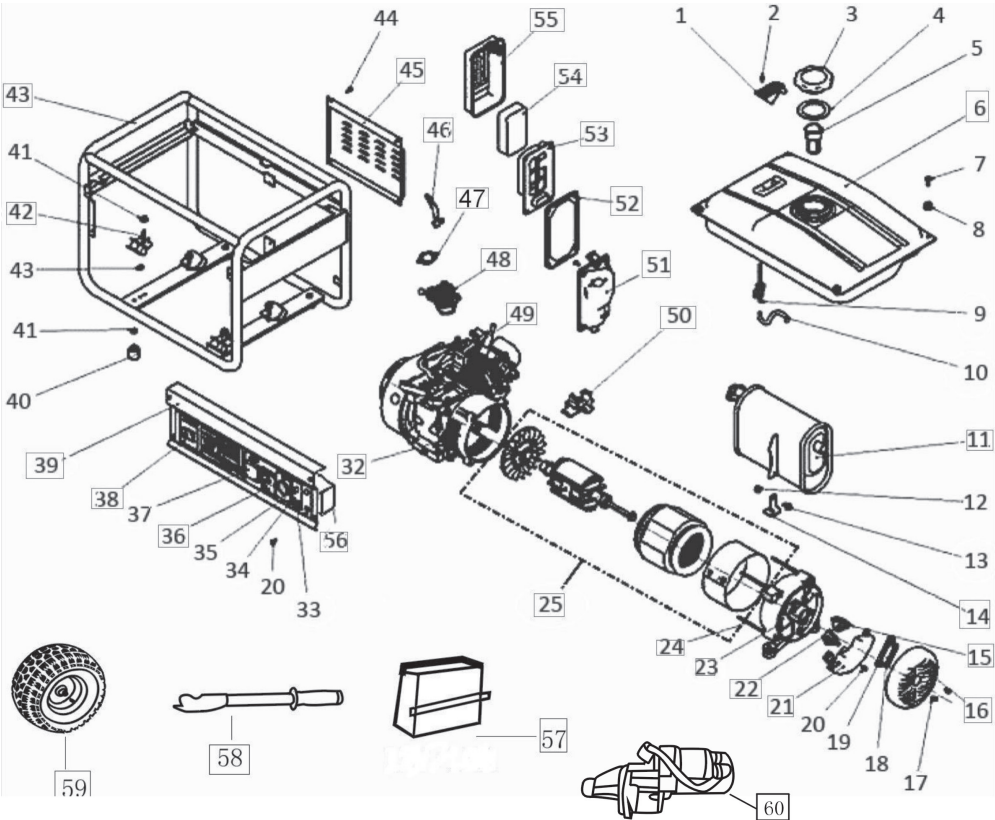
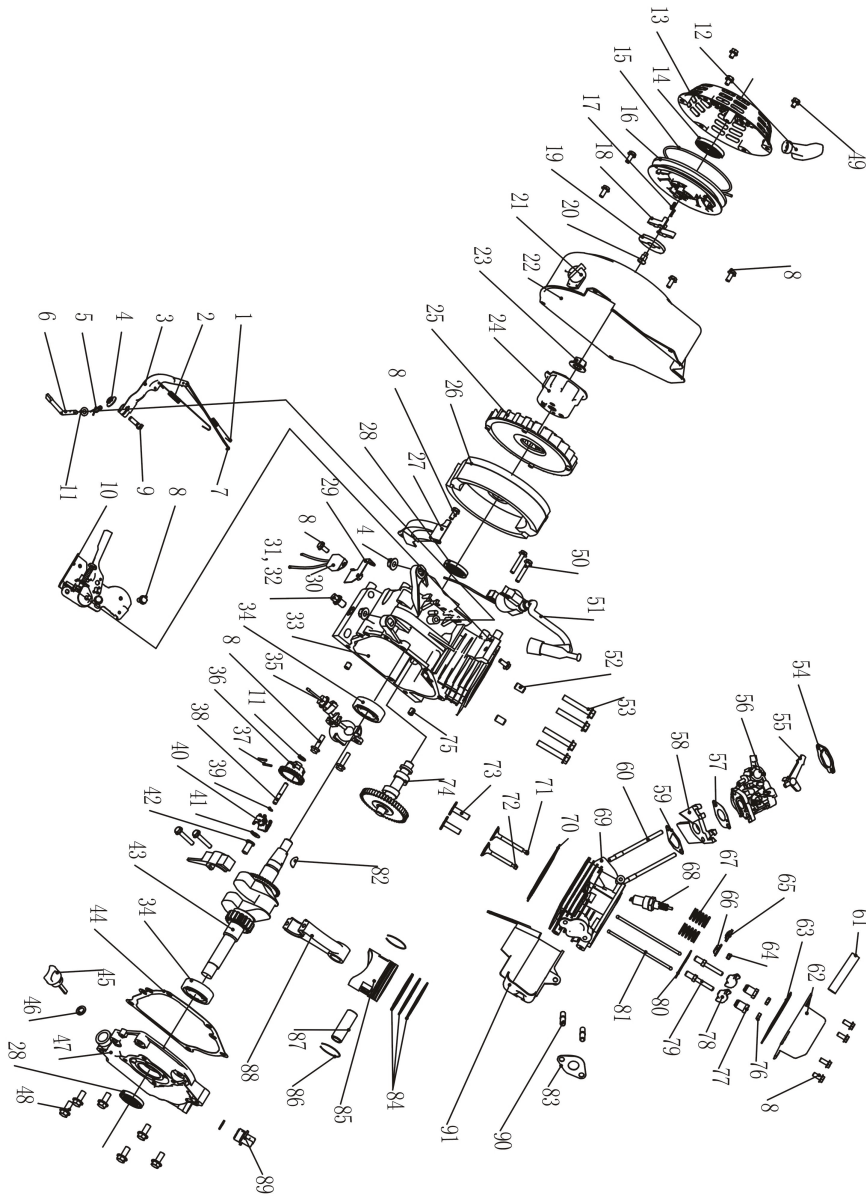


# PG-87156EX



1	oil level gage	34	lamp +, -
2	screw (5*10MM)	35	fuse
3	fuel tank cap	36	overload protector(5.0KW)
4	gasket of fuel tank cap	37	voltmeter
5	fuel filter	38	ON/OFF switch (key starter)
6	fuel tank (25L)	40	shokproof foot
7	screw of fuel tank	41	screw (M8)
8	shock gasket of fuel tank	42	bottom rubber
9	fuel control valve	43	frame (5.0kw)
10	fuel pipe	44	screw of muffler cover (M6*12)
11	liner of muffler	45	188 muffler cover
12	screw of muffler (M6*12, M8*16)	46	lever carburetor
13	screw of muffler (M6*12, M8*16)	47	188 gasket of carburetor
14	muffler bracket	48	188 carburetor
15	bracket(carbon brushes)	49	188 high voltage set
16	real cover	50	insulator carburetor
17	screw of real cover (M5*12)	51	188 plate of air clerner
18	terminal	52	188 gasket of air cleaner
19	screw (M8*4)	53	188 inner core of air cleaner
20	screw of AVR	54	188 air cleaner filter
21	AVR (5.0kw)	55	188 cover of air clerner
22	bracket	56	188 panel cover
23	screw of bracket (M6*180)	57	battery
24	alternator	58, 59	handels+wheels
32	engine assembly (5.0kw)	60	motor
33, 39	panel		

## ENGINE FOR PG-87156EX



No.	DESCRIPTION	No.	DESCRIPTION	No.	DESCRIPTION
1	188 THROTTLE RETURN SPRING	41	188 GOVERNOR SHAFT WASHER	81	188 PUSH ROD
2	188 GOVERNOR SPRING	42	188 GOVERNOR COVER	82	188 KEY
3	188 GOVERNOR ARM	43	188 CRANKSHAFT COMP	83	188 MUFFLER PACKING
4	188 NUT M6	44	188 CASE OVER PACKING	84	188 FIRST RING SET
5	188 LOCK PIN	45	188 OIL FILLER CAP ASSEMBLY		188 SECOND RING SET
6	188 GOVERNOR ARM SHAFT	46	188 OIL FILLER CAP PACKING		188 RING COMP
7	188 GOVERNOR ROD	47	188 CRANKCASE COVER	85	188 PISTON
8	188 FLANGE BOLT M6*12	48	188 FLANGE BOLT 8*32	86	188 PISTON PIN CLIP
9	188 GOVERNOR ARM BOLT	49	188 FLANGE BOLT 6*8	87	188 PISTON PIN
10	188 CONTROL ASSEMBLY	50	188 FLANGE BOLT 6*25	88	188 CONNECTING ROD COMP
11	188 GOVERNOR WASHER	51	188 IGNITOR	89	188 OIL FILLER CAP
12	188 RECOIL STARTER KNOB	52	188 DOWEL PIN 10*16	90	188 STUD BOLT
13	188 RECOIL STARTER COMP	53	188 FLANGE BOLT 8*55	91	188 SHROUD COMP
14	188 RECOIL STARTER SPRING	54	188 CARBURETOR WASHER		
15	188 RECOIL STARTER ROPE	55	188 CHOKE LEVEL COMP		
16	188 RECOIL STARTER REEL	56	188 CARBURETOR ASSEMBLY		
17	188 RETURN SPRING	57	188 CARBURETOR PACKING		
18	188 STARTER RATCHET	58	188 CARBURETOR INSULATOR		
19	188 RATCHET GUIDE	59	188 INSULATOR PACKING		
20	188 SETTING SCREW	60	188 STUD BOLT 6*113		
21	188 SWITCH	61	188 BREATHER TUBE		
22	188 FAN COVER COMP	62	188 HEAD OVER COMP		
23	188 NUT M14	63	188 HEAD OVER PACKING		
24	188 START HUB	64	188 VALVE ROTATOR		
25	188 COOLING FAN	65	188 INTAKE VALVE SPRING RETAINER		
26	188 FLY WHEEL (ELECTRONIC)	66	188 EXHAUST VALVE SPRING RETAINER		
27	188 SIDE PLACE	67	188 VALVE SPRING		
28	188 OIL SEAL	68	188 SPARK PLUG		
29	188 DIODE BASE COMP	69	188 CYLINDER HEAD COMP		
30	188 DIODE COMP	70	188 CYLINDER HEAD GASKET		
31	188 DRAIN PLUG BOLT	71	188 INTAKE VALVE		
32	188 DRAIN BOLT WASHER	72	188 EXHAUST VALVE		
33	188 CRANKCASE	73	188 VALVE LIFTER		
34	188 RADIAL BALL BEARING 6205	74	188 CAMSHAFT ASSEMBLY		
35	188 OIL LEVEL SWITCH ASSY	75	188 DOWEL PIN 8*14		
36	188 GOVERNOR WEIGHT HOLDER	76	188 PIVOT ADJUSTING NUT		
37	188 GOVERNOR WEIGHT PIN	77	188 ROCKER ARM PIVOT		
38	188 GOVERNOR SHAFT	78	188 VALVE ROCKER ARM		
39	188 GOVERNOR HOLDER CLIP	79	188 PIVOT BOLT		
40	188 GOVERNOR WEIGHT	80	188 PUSH ROD GUIDE PLATE		