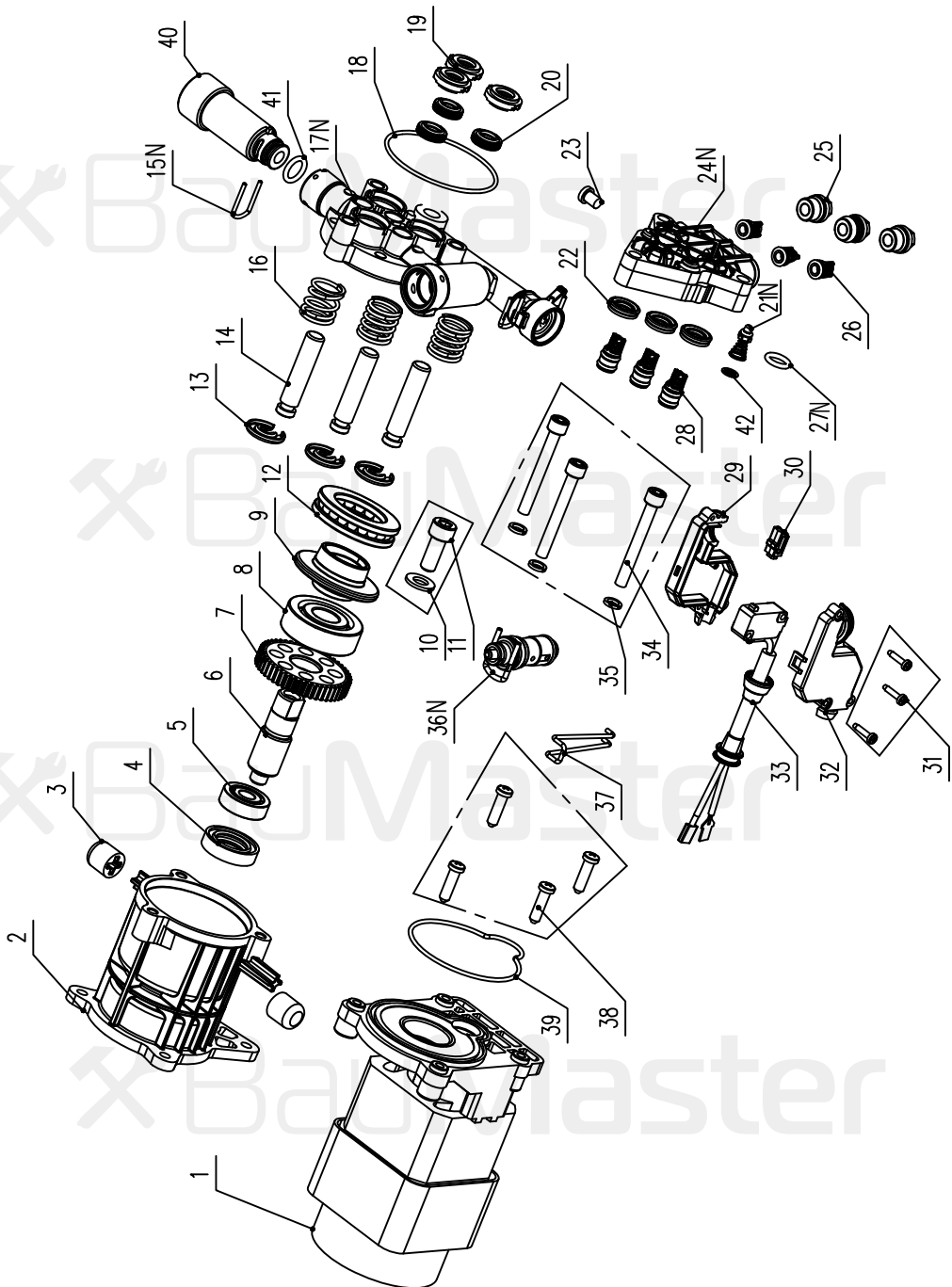


PW-9220BE

NO.	DESCRIPTION	NO.	DESCRIPTION
1	ON/OFF SWITCH KNOB	19	WATER INLET QUICK CONNECTOR
2	DECORATIVE STRIP	20	WHEEL GASKET
3	FRONT COVER	21	WHEEL CAP
4	HAND GRIP	22	WHEEL
5	CONNECTING ROD	23	BOTTOM MOTOR COVER
6	JOINTED ARM	24	CABLE COMPONENT
7	LEFT REEL HOOK	25	MOTOR & PUMP SET
8	HANDLE	26	UPPER MOTOR COVER
9	HANDLE COVER	27	SWITCH
10	GUN HOLDER	28	SWITCH TRANSMISSION AXLE
11	RIGHT REEL HOOK	29	CAPACITOR
12	RIGHT HOSE REEL	30	MOTOR JUNCTION BOX CAP
13	LEFT HOSE REEL	31	SCREW 2.9X13
14	BACK COVER	32	WATER OUTLET LOCK BUTTON
15	SPRAY GUN RIGHT FIXED SHELF	33	SPRAY GUN
16	SCREW 4.8X20	34	TRIGGER GUN
17	SPRAY GUN LEFT FIXED SHELF	35	HIGH PRESSURE HOSE
18	CABLE HOOK		

UK-BM20200604



MOTOR AND PUMP FOR PW-9220BE

NO.	DESCRIPTION	NO.	DESCRIPTION
1	BRUSH MOTOR	22	WATER SEAL
2	CONNECTING SEAT	23	SCREW M6*8
3	RUBBER MAT	24N	PUMP HEAD
4	OIL SEAL	25	PLUG COMPONENT
5	BEARING 629ZZ	26	WATER OUTLET ONE-WAY VALVE COMPONENT
6	GEAR SHAFT	27N	O-RING
7	GEAR	28	WATER INLET ONE-WAY VALVE COMPONENT
8	BEARING 6302	29	SWITCH BOX LOWER COVER
9	BEARING SEAT	30	PUSH ROD
10	SPRING WASHERS Ø8	31	SCREW ST2.9*13
11	SCREW M8*20	32	SWITCH BOX TOP COVER
12	BALL BEARING 51106	33	SWITCH COMPONENT
13	PISTON CLIP	34	SCREW M6*55
14	PISTON	35	SPRING WASHERS Ø6
15N	PIN	36N	OVERFLOW VALVE COMPONENT
16	PISTON SPRING	37	PIN
17N	PUMP	38	SCREW ST5.5*20
18	O-RING	39	O-RING
19	MIDDLE RING	40	Water Inlet
20	OIL SEAL	41	O-Ring
21N	ONE-WAY VALVE COMPONENT	42	Tower spring seat