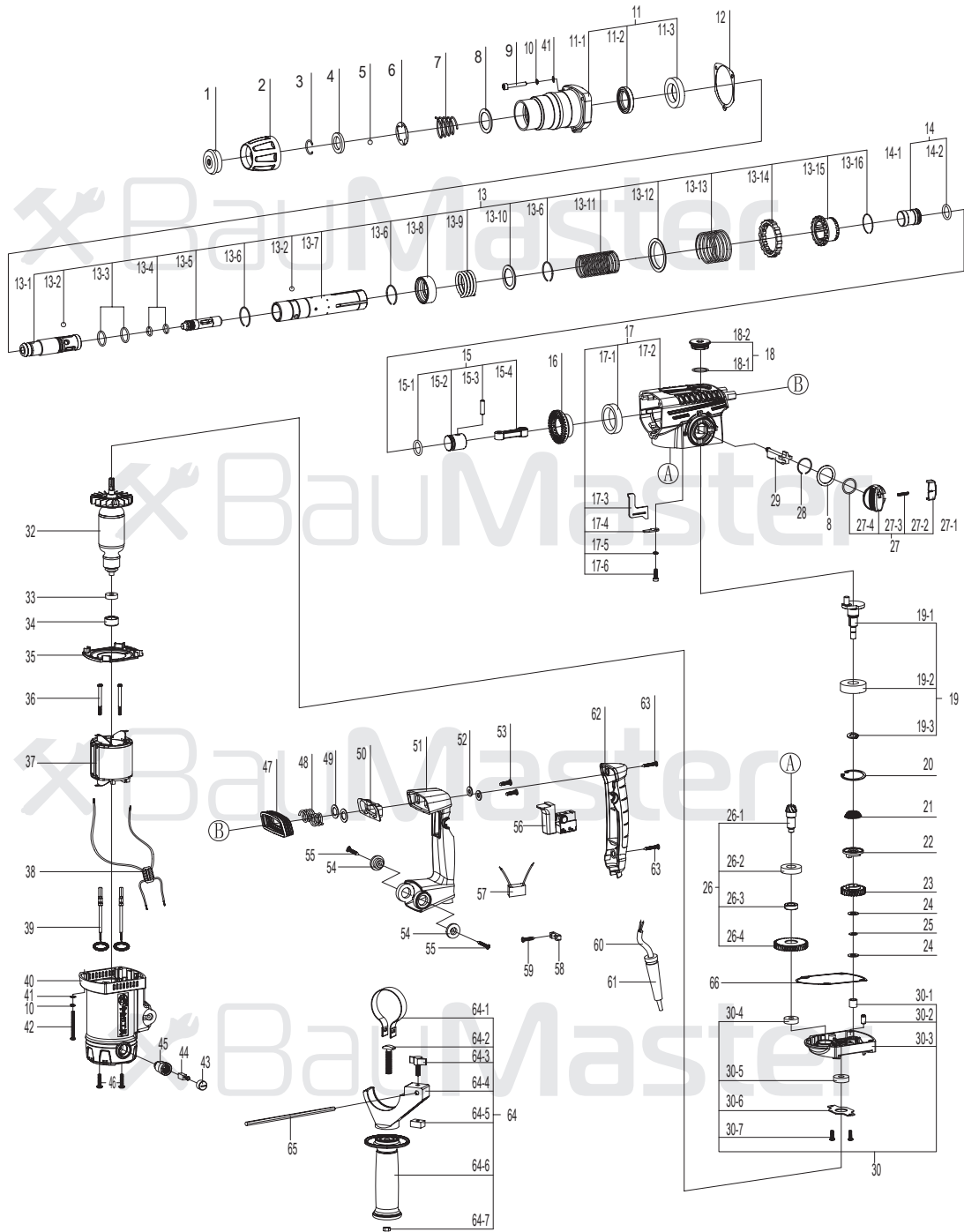


RH-2560



NO.	DESCRIPTION	NO.	DESCRIPTION
1	FRONT COVER	26-1	SMALL BEVEL GEAR
2	SLIDER	26-2	BEARING 16002
3	CIRCLIP 19×2	26-3	POSITION BUSH
4	WASHER	26-4	BIG GEAR
5	STEEL BALLΦ7.14	27	FUNCTION SELECTION KNOB ASSEMBLY
6	WASHER	27-1	LOCKING BLOCK
7	SPRING	27-2	SPRING
8	WASHER	27-3	FUNCTION SELECTION KNOB
9	BOLT M5×30	27-4	O-RING
10	SPRING WASHER	28	CIRCLIP Φ22
11	CYLINDER CASE ASSEMBLY	29	FUNCTION SELECTION ROD
11-1	CYLINDER CASE	30	MIDDLE COVER ASSEMBLY
11-2	OIL SEAL	30-1	NEEDLE BEARING HK0808
11-3	BEARING 61906	30-2	GEAR BOX PIN
12	PAPER WASHER	30-3	MIDDLE COVER
13	CYLINDER ASSEMBLY	30-4	BEARING 608Z
13-1	GUARD RING SLEEVE	30-5	BEARING 609Z
13-2	STEEL RING Φ7.14	30-6	BEARING PRESS BOARD
13-3	GUARD RING SLEEVE O-RING	30-7	SCREW M4×8
13-4	SECOND STRIKER O-RING	32	ROTOR
13-5	SECOND STRIKER	33	BEARING 607
13-6	CIRCLIP	34	BEARING BUSH
13-7	CYLINDER	35	WIND GUIDE
13-8	CYLINDER SLEEVE	36	STATOR BOLT
13-9	CYLINDER SPRING	37	STATOR
13-10	CYLINDER WASHER	38	INDICATOR
13-11	CLUTCH SPRING	39	CONNECT CABLE
13-12	SPRING BASE	40	HOUSING
13-13	CLUTCH SLEEVE SPRING	41	WASHER
13-14	CLUTCH SLEEVE	42	BOLT M5×60
13-15	CLUTCH	43	BRUSH COVER
13-16	CIRCLIP	44	CARBON BRUSH
14	RAM ASSEMBLY	45	BRUSH HOLDER
14-1	RAM	46	SCREW ST4×12
14-2	RAM O-RING	47	ANTI-VIBRATION COVER
15	CONNECT ROD ASSEMBLY	48	ANTI-VIBRATION SPRING
15-1	RAM O-RING	49	WASHER
15-2	PISTON	50	SPRING BASE
15-3	CONNECT ROD PIN	51	HANDLE
15-4	CONNECT ROD	52	WASHER
16	BEVEL GEAR	53	BOLT M5×12
17	GEAR BOX ASSEMBLY	54	WASHER
17-1	GEAR BOX BUSH	55	SCREW ST5×18
17-2	GEAR BOX	56	SWITCH
17-3	FUNCTION SELECTION PIECE 1	57	CAPACITOR
17-4	FUNCTION SELECTION PIECE 2	58	CABLE CLAMP
17-5	SPRING WASHER 4	59	SCREW ST3.9×16
17-6	BOLT M4×16	60	CABLE
18	OIL COVER ASSEMBLY	61	CABLE SLEEVE
18-1	OIL COVER O-RING	62	HANDLE COVER
18-2	OIL COVER	63	SCREW ST3.9×25
19	CRANK ASSEMBLY	64	AUXILIARY HANDLE
19-1	CRANK	64-1	HANDLE RING
19-2	BEARING 6203	64-2	T-BOLT
19-3	CIRCLIP 16	64-3	KNOB
20	CIRCLIP	64-4	HANDLE BASE
21	SPRING	64-5	LOCKING NUT
22	SMALL CLUTCH	64-6	HANDLE
23	GEAR	64-7	NUT M8
24	TOOTH WASHER	65	DEPTH GAUGE
25	SURFACE BEARING AXK0816	66	PAPER WASHER
26	SMALL BEVEL GEAR ASSEMBLY		