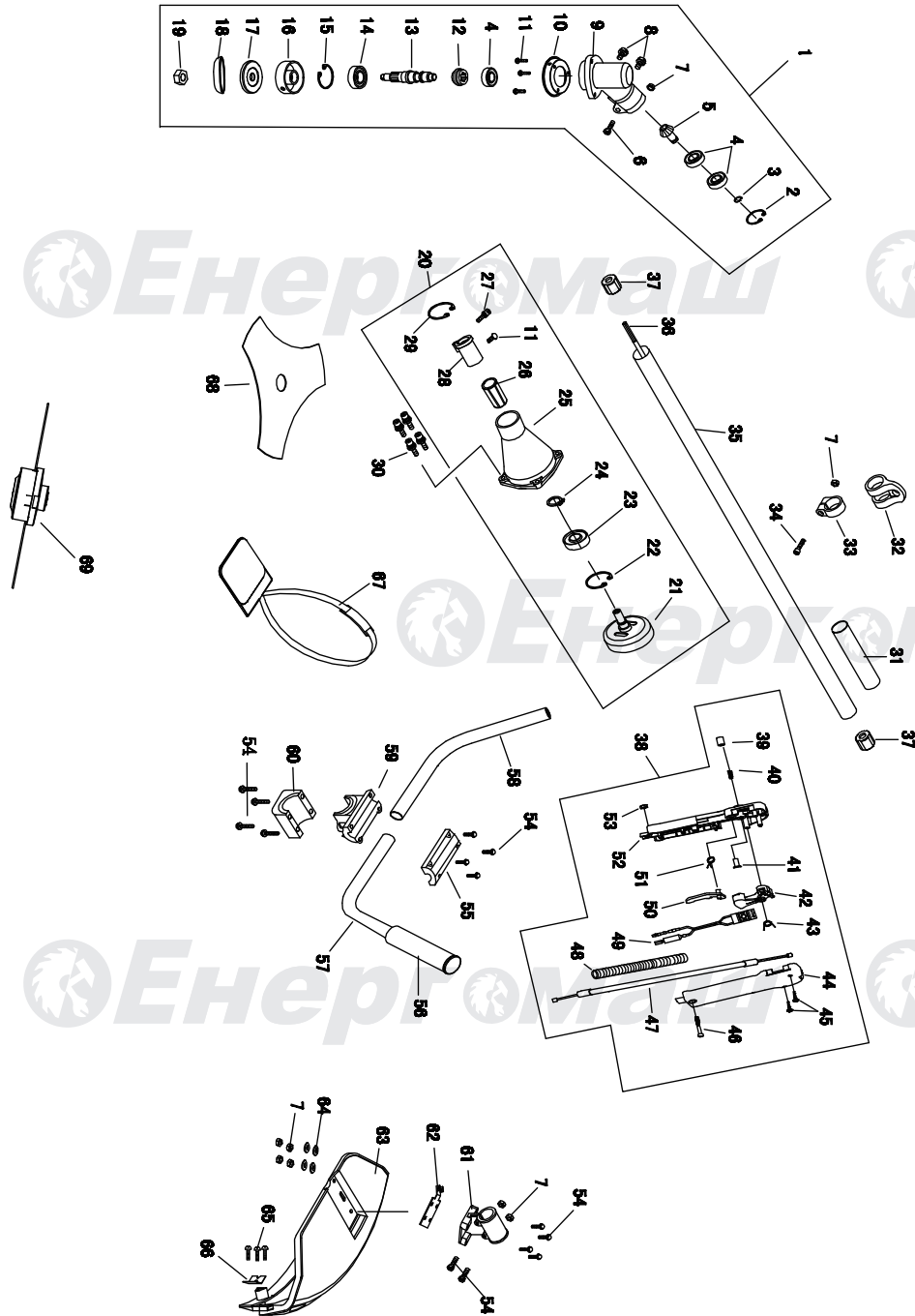
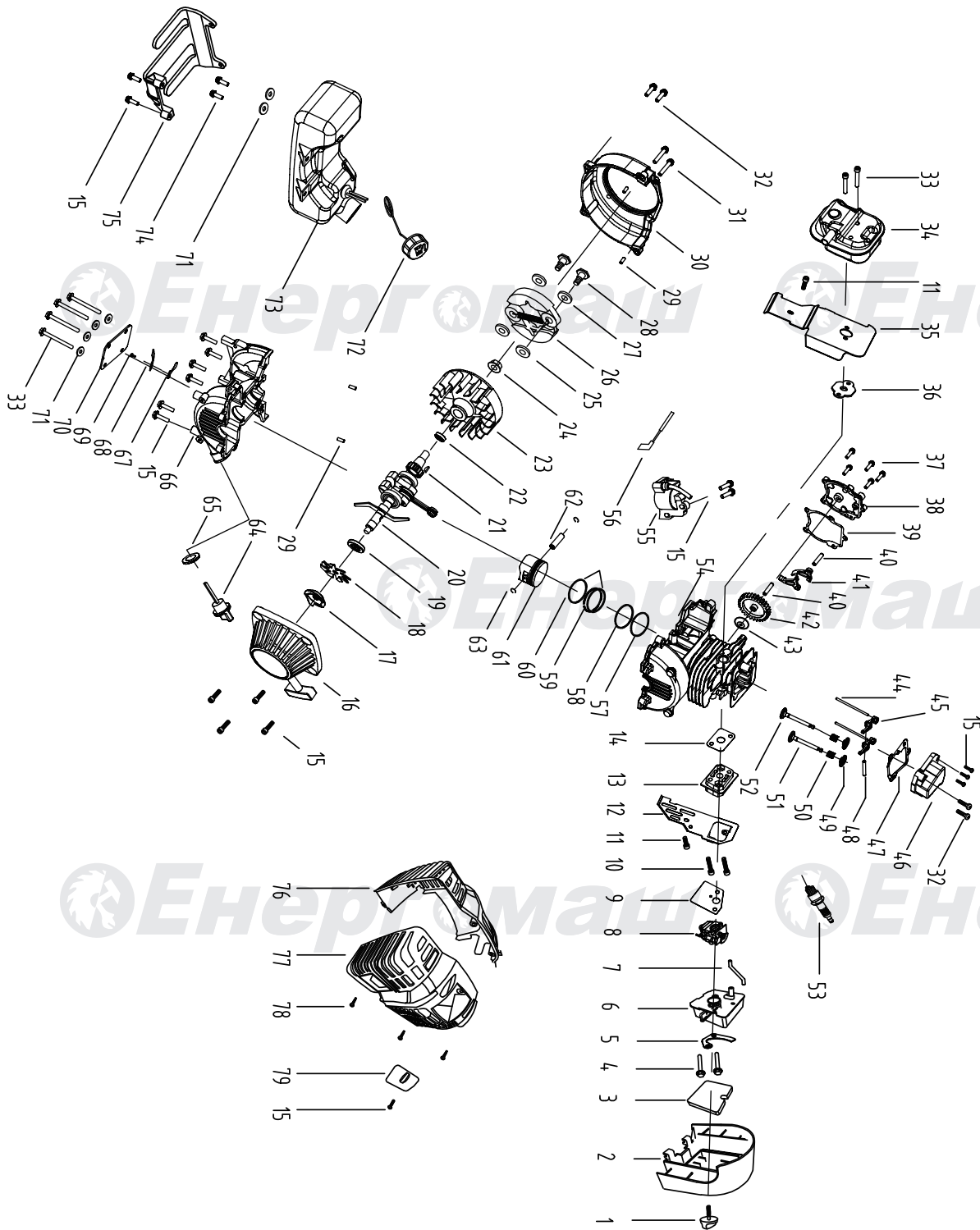


БТ-89314Д



NO.	DESCRIPTION	NO.	DESCRIPTION
1	GEAR BOX	36	DRIVE SHAFT
2	RING 26	37	OIL-BEARING
3	RING 10	38	LEVEL ASSY
4	BEARING 6000-2RS	39	BUTTON
5	PINION	40	SPRING
6	SCREW M5X35	41	LOCKPIN
7	NUT M5	42	THROTTLE LEVER
8	SCREW ASSY M6X12	43	SPRING
9	GEAR	44	BOX,RIGHT
10	SAFETY COVER A	45	SCREW ST4X16
11	SCREW ASSY M5X12	46	SCREW M6X30
12	GEAR	47	CABLE COMP
13	GEAR SHAFT	48	TUBE
14	BEARING 6002-2RS	49	STOP SWITCH
15	RING 32	50	SAFETY LEVER
16	HOLDER A	51	SPRING
17	HOLDER B	52	BOX,LEFT
18	SAFETY COVER B	53	NUT M6
19	LEFT NUT M10	54	SCREW ASSY M5X25
20	CLUTCH COMP.	55	CAP,UPPER
21	CLUTCH DRUM COMP.	56	RUBBER COVER
22	RING 35	57	LEFT HANDGRIP
23	BEARING 6202-2RS	58	RIGHT HANDGRIP
24	RING 15	59	BRACKET
25	CLUTCH CASE	60	CAP, LOWER
26	RUBBER COVER	61	BRACKET
27	SCREW ASSY M6X25	62	CONNECT
28	CONNECTING ROD	63	SAFETY GUARD
29	RING 45	64	WASHER 5
30	SCREW ASSY M6X30	65	SCREW ST4X10
31	RUBBER COVER	66	GUARD
32	HARNES CLAMP	67	HARNES ASSY
33	CLAMP	68	BLADE
34	SCREW M5X20	69	NYLON CUTTER HEAD
35	PIPE		

БЕНЗОДВИГАТЕЛЬ ДЛЯ БТ-89314Д



NO.	DESCRIPTION	NO.	DESCRIPTION
1	LOCKING NUT M4×17	41	BELOW ROCKER
2	AIR FILTER COVER	42	CAM WHEEL
3	AIR FILTER SPONGE	43	CAM WHEEL WASHER
4	SCREW M4×17	44	JIB
5	ANTI-OIL BOARD	45	UPPER ROCKER
6	AIR FILTER SET	46	CYLINDER COVER
7	WIND PIPE	47	CYLINDER COVER WASHER
8	CARBURETOR	48	PIN Ø4*30.5
9	CARBURETOR PAPER WASHER	49	SPRING SEAT
10	BOLT M5X35	50	SPRING
11	BOLT M5X12	51	OUTPUT VALVE
12	ADMITTING PIPE BOARD	52	INPUT VALVE
13	ADMITTING PIPE	53	SPARK PLUG
14	ADMITTING PIPE R WASHER	54	CYLINDER
15	BOLT M5X20	55	IGNITOR
16	STATER	56	FLAMEOUT CABLE
17	START PAWL	57	FIRST PISTON RING
18	FAN	58	SECOND POSITION RING
19	OIL SEAL Ø25*Ø12*6	59	WAVE RING
20	CRANK	60	RING
21	KEY 3*5*13	61	PISTON
22	OIL SEAL Ø25*Ø15*6	62	PISTON PIN
23	FLY WHEEL	63	PISTON PIN CIRCLIP
24	NUT M10X1.25	64	DIPSTICK
25	CLUTCH WASHER Ø16*Ø8*1.5	65	DIPSTICK O-RING
26	CLUTCH	66	CASE
27	WAVE WASHER Ø16*Ø11*0.4	67	REED
28	BOLT M8*10*25	68	BOARD
29	PIN Ø4*8	69	SCREW M3X8
30	SIDE COVER	70	BOARD
31	BOLT M5X30	71	WASH Ø5
32	BOLT M5X25	72	FUEL TANK COVER
33	BOLT M5X55	73	FUEL TANK
34	MUFFLER	74	BOLT M5X16
35	MUFFLER BOARD	75	FUEL TANK BRACKET
36	MUFFLER WASHER	76	CASE FRONT COVER
37	SCREW M4X16	77	CASE REAR COVER
38	SIDE COVER	78	SCREW ST5X14
39	SIDE COVER WASHER	79	SPARK PLUG COVER
40	SIDE PIN Ø5*25.6		