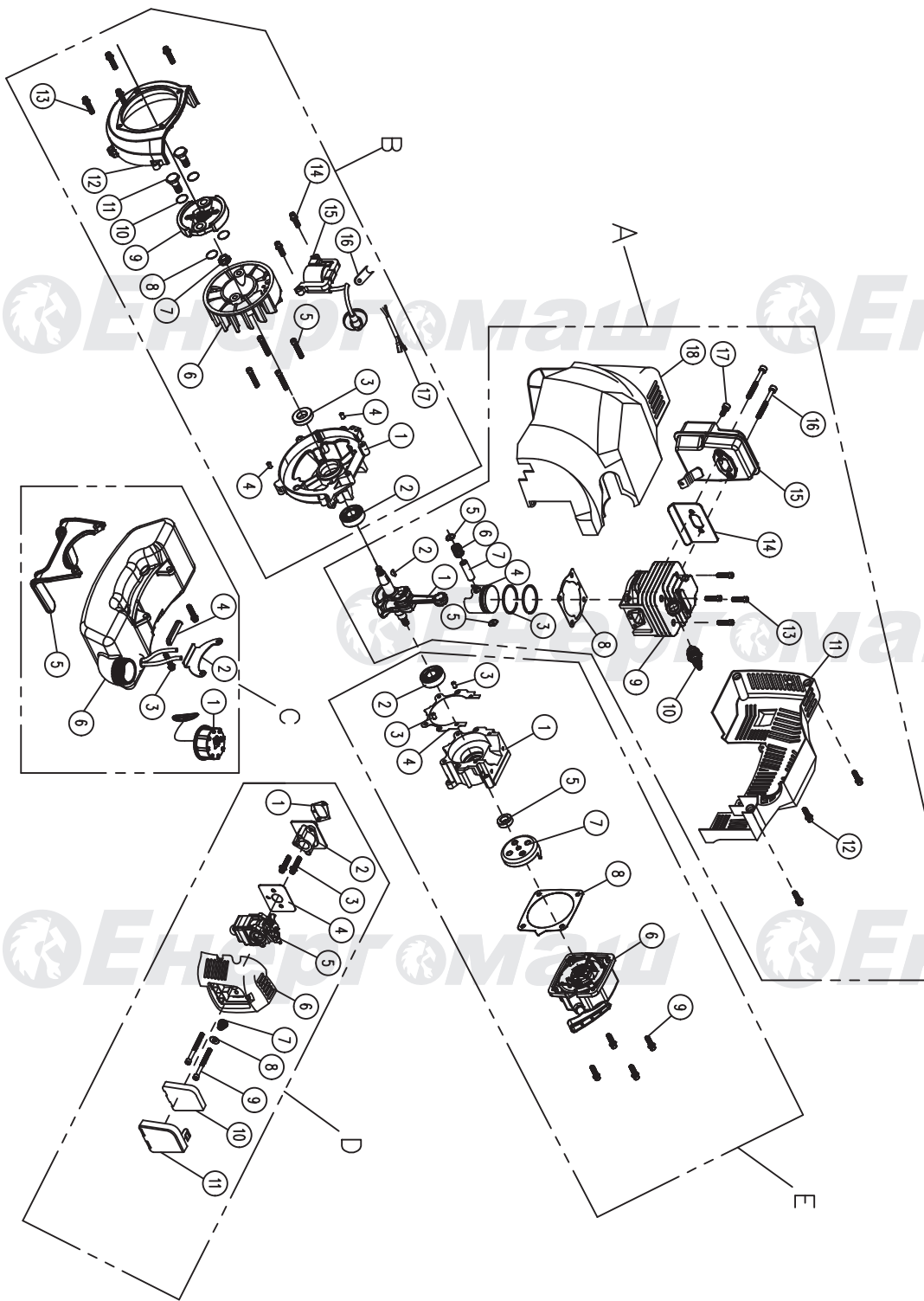


### BT-8943M BT-8952M

NO.	DESCRIPTION	NO.	DESCRIPTION
1	CLUTCH CASE ASSY	19	PROTECTOR SEAT
2	BELT	20	TRANSMISSION SHAFT
3	LIFTING RING(BIG)	21	BEARING
4	LIFTING RING(SMALL)	22	NYLON CUTTER
5	SWITCH ASSY	23	SCREW M6*30 (BUILT-UP)
6	LEFT HANDLE	24	SCREW M6*20 (BUILT-UP)
7	HANDLE SCREW	25	SCREW M5*14 (BUILT-UP)
8	SPRING	26	SCREW M5*20 (BUILT-UP)
9	HANDLE HOLDER(1)	27	NUT M5
10	SHAFT PIPE	28	SCREW M6*25 (BUILT-UP)
11	PROTECTOR HOLDER	29	SCREW M5*25(BUILT-UP)
12	GEAR BOX ASSY	30	HANDLE HOLDER(2)
13	GEAR BOX ASSY	31	HANDLE HOLDER(3)
14	GEAR BOX ASSY	32	HANDLE HOLDER(4)
15	GEAR BOX ASSY	33	CUTTING KNIFE
16	GEAR BOX ASSY	34	SCREW ST4.2*8
17	3T BLADE	35	SWITCH ALU PIPE
18	PROTECTOR	36	LEFT HANDLE ALU PIPE

EN-UK20181011

## БЕНЗОДВИГАТЕЛЬ ДЛЯ БТ-8943М БТ-8952М



### Area A

NO.	DESCRIPTION
1	CRANKSHAFT
2	PIN 3*5*13
3	PISTON RING
4	PISTON
5	PISTON PIN RING
6	BEARING
7	PISTON PIN
8	GASKET
9	CYLINDER
10	SPARK PLUG BM6A
11	BACK COVER
12	SCREW
13	SCREW M6*20
14	GASKET
15	MUFFLER
16	SCREW M6*55
17	SCREW M5*12
18	FRONT COVER

### Area B

NO.	DESCRIPTION
1	CRANKSHAFT CASE(LEFT)
2	BEARING 6202
3	OIL SEAL15*30*7
4	PIN Ø5×10
5	SCREW M5*35
6	FLYING WHEEL
7	SCREW M8*1
8	GASKET 8
9	CLUTCH ASSY
10	GASKET 10
11	SCREW M8*9.8*24
12	SIDE COVER
13	SCREW M5*25
14	SCREW M5*20
15	COIL
16	COIL WIRE RUBBER
17	SHUT-DOWN WIRE

### Area C

NO.	DESCRIPTION
1	TANK LID ASSY
2	TANK HOLDER
3	SCREW M5*20
4	TANK HOLDER SHOCK REDUCER
5	TANK PROTECTOR
6	TANK ASSY

### Area D

NO.	DESCRIPTION
1	GASKET
2	INTAKE-TUBE
3	SCREW M5*30
4	GASKET
5	CARBURETOR
6	CARBURETOR STANDER
7	SPRING
8	GASKET 5
9	SCREW M5*55
10	SPONGE
11	AIR FILTER COVER

### Area E

NO.	DESCRIPTION
1	CRANKSHAFT CASE (RIGHT)
2	BEARING 6202
3	PINØ5×10
4	GASKET
5	OIL SEAL 12*22*7
6	DRIVE PLATE(EASY)
7	STARTER GASKET
8	STARTER (EASY)
9	SCREW M5*20

EN-UK20181011