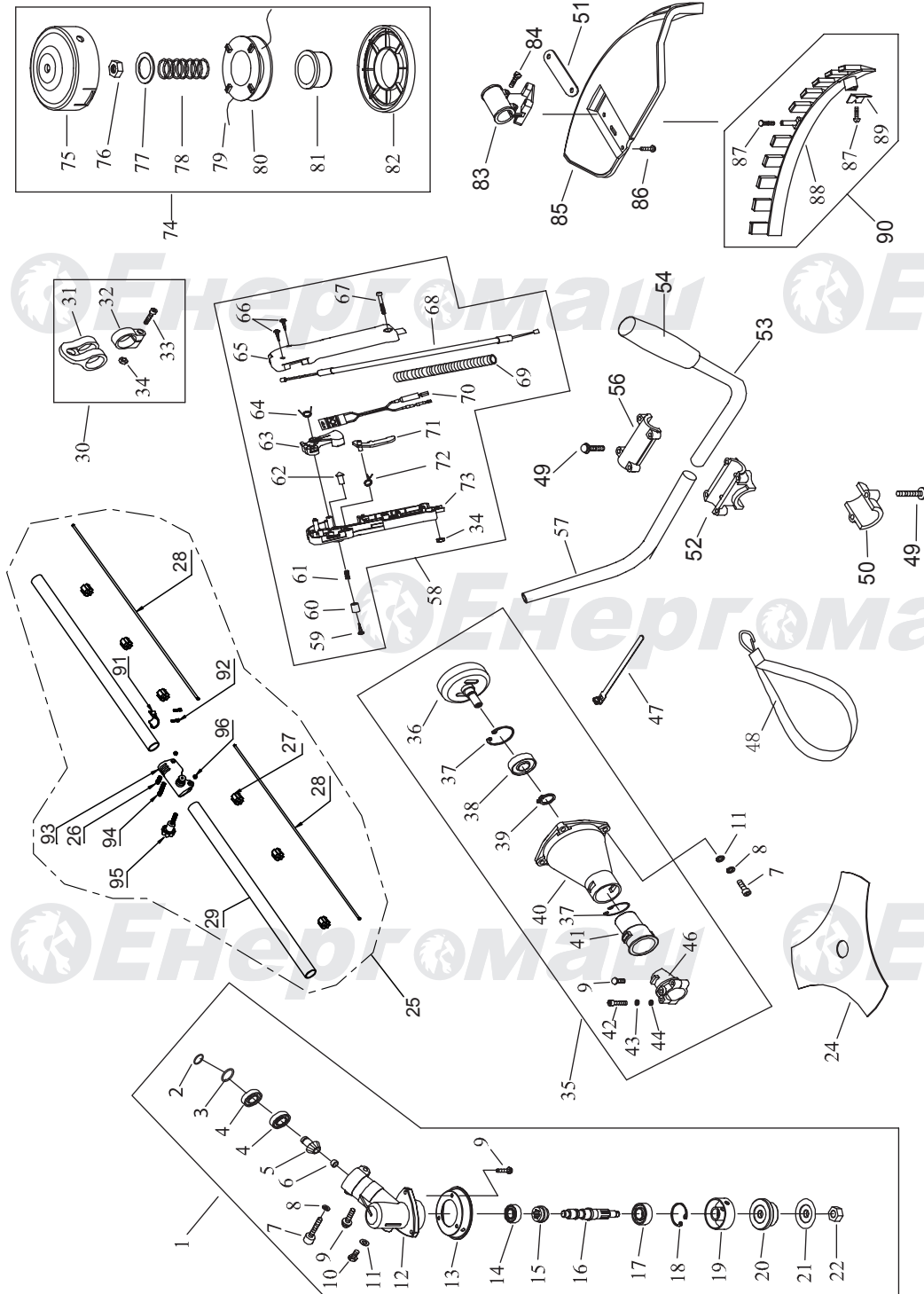


БТ-8943СА БТ-8952СА



NO.	DESCRIPTION	NO.	DESCRIPTION	NO.	DESCRIPTION
1	GEAR CASE ASS'Y	33	SCREW M5X20	66	SCREW ST2.9X18
2	STOP RING	34	NUT	67	SCREW M5X30
3	STOP RING	35	CLUTCH COMP.	68	CABLE COMP.
4	BEARING 6000-2RS/P5	36	CLUTCH DRUM COMP.	69	TUBE
5	PINION	37	STOP RING	70	STOP BUTTON COMP.
6	STEEL PLATE CAP	38	BEARING 6202-2RS/P5	71	HANDGRIP
7	SCREW M6X20	39	STOP RING	72	SPRING
8	WASHER	40	LINKER	73	BOX,LEFT
9	SCREW M5X12	41	RUBBER COVER	74	NYLON CUTTER HEAD
10	BOLT M6X12	42	SCREW	75	CASE
11	WASHER	43	WASHER	76	LEFT NUT
12	GEAR CASE	44	WASHER	77	WASHER
13	BLADE COVER	46	CLAMP	78	SPRING
14	BEARING 6000/P5	47	WIRE CLAMP BAND	79	NYLON CORD
15	GEAR	48	HARNESS ASS'Y	80	CORD HOLDER
16	GEAR SHAFT	49	SCREW M5X2	81	PLATEN
17	BEARING 6002-2RS/P5	50	CAP,LOWER	82	COVER
18	STOP RING	51	WASHER	83	BRACKET
19	HOLDER	52	BRACKET	84	SCREW M5X30
20	HOLDER	53	HANDLE	85	SAFETY GUARD
21	HOLDER	54	GRIP LEFT	86	SCREW M5X16
22	LEFT NUT	56	CAP,UPPER	87	SCREW ST4.2X16
24	BLADE	57	HANDLE	88	GUARD
25	PIPE COMP.	58	LEVER ASS'Y	89	BLADE
26	M5X12 BOLT	59	SCREW ST2.9X13	90	GUARD ASS'Y
27	OIL-BEARING	60	BUTTON	91	HANDLE HOLDER (BASE)
28	DRIVE SHAFT	61	SPRING	92	M5X15 BOLT
29	PIPE	62	CLOCK PIN	93	HANDLE HOLDER (COVER)
30	HOLDER ASS'Y	63	HANDGRIP	94	M5X35 BOLT
31	HARNESS CLAMP	64	SPRING	95	THUMB SCREW
32	CLAMP	65	BOX,RIGHT	96	NUT

EN-UK20180831-01

БЕНЗОДВИГАТЕЛЬ ДЛЯ БТ-8943СА БТ-8952СА

NO.	DESCRIPTION	NO.	DESCRIPTION	NO.	DESCRIPTION
9	SCREW M5X20	44	CYLINDER	76	SCREW M5X16
10	GASKET	45	SCREW	77	CLEANER COVER
11	NUT	46	GUIDE COVER ASS'Y	78	OUTLET FUEL PIPE
16	OIL-SEAL	47	SPARK PLUG	79	PLUG
17	CRANK CASE	48	SPRING	80	INLET FUEL PIPE
18	BEARING 6202/P5	49	PLUG COVER	81	FUEL TANK
19	CRANK SHAFT	50	PLUG CAP	82	LID ASS'Y
20	KEY	51	PLUG	82-1	FUEL TANK LID
21	PIN	52	UPPER COVER	82-2	GASKET
22	RUBBER WASHER	53	UPPER COVER	82-3	INLET
23	CRANK CASE	54	GASKET	82-4	INSIDE COVER
24	FLASH PAN	55	MUFFLER	82-5	LID
25	SCREW M5X30	56	SCREW	82-6	CHAIN
26	MAGNETO ROTO COMP	57	BOLT	89	STAND
27	NUT	59	SCREW	90	GUIDE PLATE
28	IGNITION COLL COMP	60	GASKET	91	SCREW M5X20
29	CORD COMP	61	ADMITTING PIPE	93	STARTER PULLEY ASS'Y
30	BOLT M5X20	62	GASKET	93-1	STARTER REEL
31	WASHER B	63	CARBURETOR	93-2	STOP RING
32	SPRING	69	STARTER	93-3	STARTER PAWL SPRING
33	EXPANDER	69-1	SCREW	93-4	STARTER PAWL
34	WASHER	69-2	WASHER	94	CLEANER OUTSIDE COVER
35	SCREW PIN	69-3	START ROPE REEL	95	CLEANER ELEMENT
36	FAN COVER	69-4	ROPE	96	DEFENDER FOR CLEANER ELEMENT
37	BEARING	69-5	RECOIL SPRING	97	SCREW ST4.2X12-F-H
38	RING	69-6	START COVER ASS'Y	98	CHOKE
39	PISTON	69-7	START HANDLE	99	CLEANER INSIDE COVER
40	PISTON PIN	69-8	RING	100	CHOKE HANDLE
41	GASKET	69-9	START RATCHET	101	SCREW M5X55
42	PISTON RING	69-10	EASY START COIL-SPRING	102	TANK PROTECTOR
43	GASKET			103	MUFFLER COVER

UK-EN20170907

