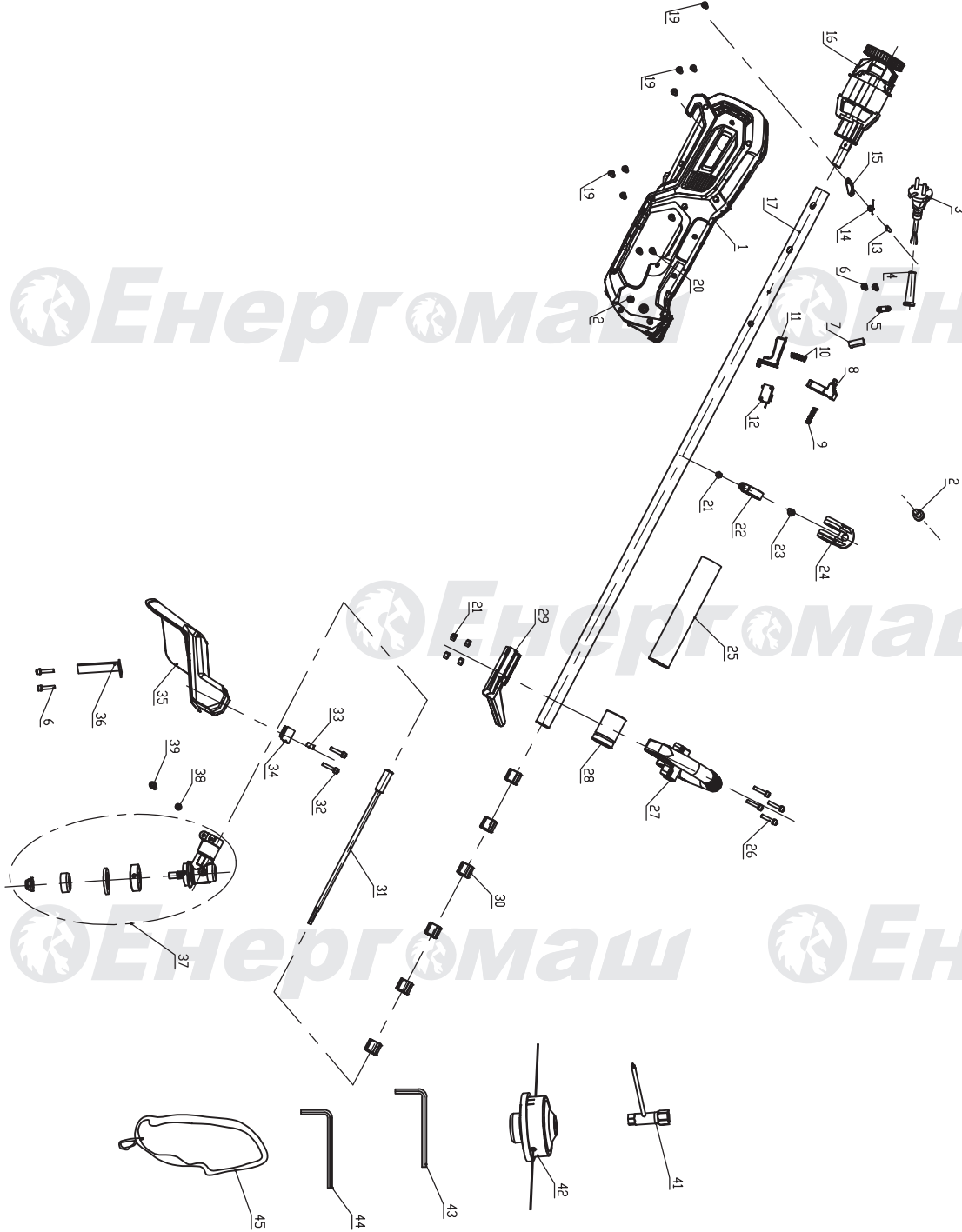


# ГК-351650



| NO. | DESCRIPTION              |
|-----|--------------------------|
| 1   | HOUSING                  |
| 2   | SCREW M5*14              |
| 3   | CABLE                    |
| 4   | CABLE PROTECTOR          |
| 5   | CABLE ANCHORAGE          |
| 6   | SCREW ST4*12             |
| 7   | CAPACITOR                |
| 8   | SAFETY LOCKING BUTTON    |
| 9   | SPRING 1                 |
| 10  | SPRING 2                 |
| 11  | SWITCH TRIGGER           |
| 12  | SWITCH                   |
| 13  | PIN $\varnothing$ 4X40   |
| 14  | TORSIONAL SPRING         |
| 15  | CABLE HOOK               |
| 16  | MOTOR ASSEMBLY           |
| 17  | STEEL TUBE ASSEMBLY      |
| 19  | SCREW ST4*16             |
| 20  | SCREW ST3*12             |
| 21  | NUT M5                   |
| 22  | LIFTING RING FIXING RING |
| 23  | SCREW M5*16              |
| 24  | LIFTING RING             |
| 25  | SPONGE TUBE              |
| 26  | SCREW M5*30              |
| 27  | UP HANDLE                |
| 28  | HANDLE FIXING RING       |
| 29  | DOWN HANDLE              |
| 30  | OIL BEARING              |
| 31  | HARD SHAFT               |
| 32  | SCREW M6*25              |
| 33  | RIVET 4X6                |
| 34  | GUARD PRESS BOARD        |
| 35  | GUARD                    |
| 36  | GUARD BLADE              |
| 37  | GEAR BOX ASSEMBLY        |
| 38  | SCREW M5*12              |
| 39  | SCREW M5*25              |
| 41  | WRENCH                   |
| 42  | SPOOL                    |
| 43  | HEX KEY S=5              |
| 44  | HEX KEY S=4              |
| 45  | STRAP                    |