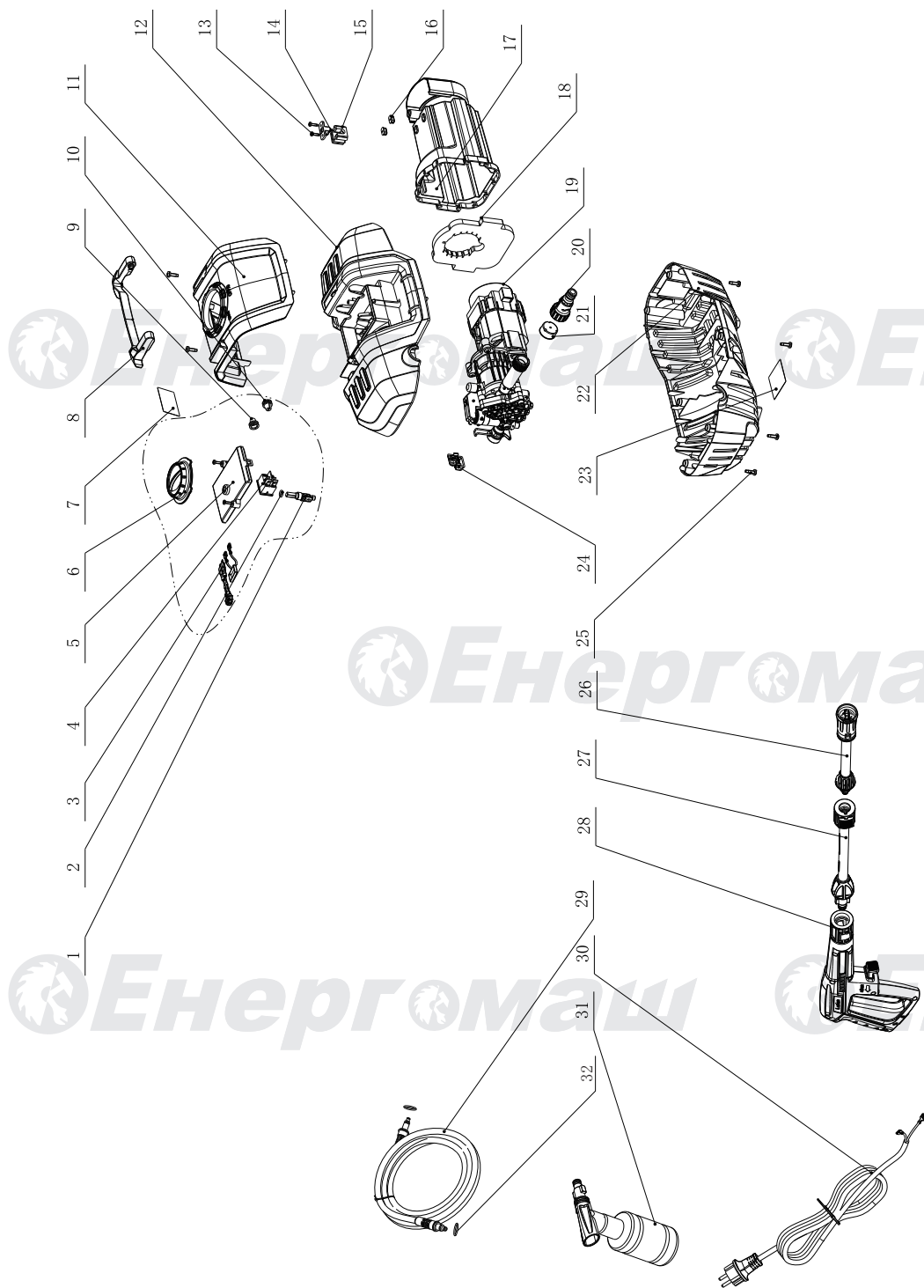


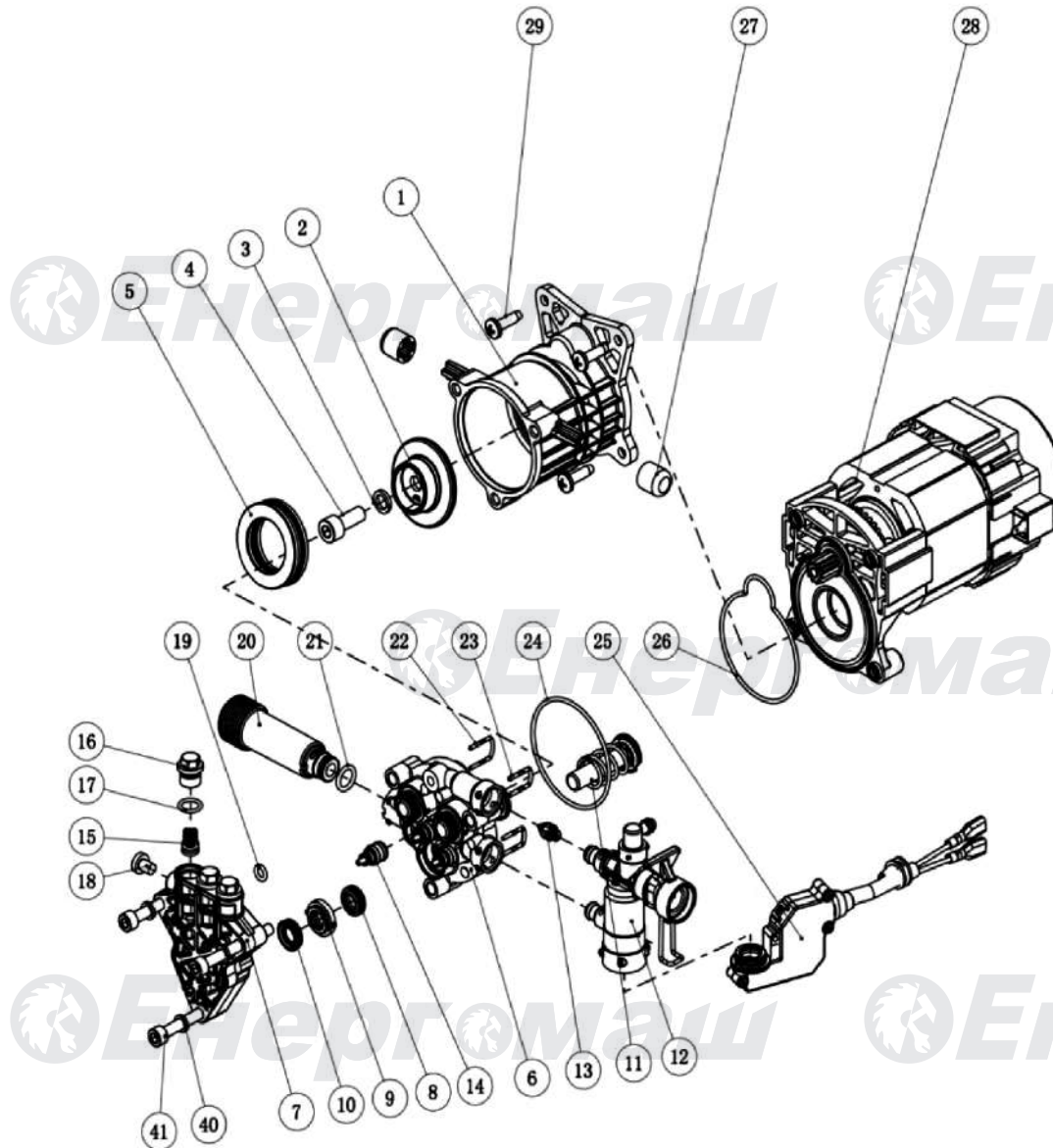
## MB-9234

NO.	DESCRIPTION
1	SWITCH LEVEL
2	O RING 8X2
3	CAPACITOR & INDUCTOR ASSY
4	MAIN SWITCH
5	SWITCH COVER
6	SWITCH KNOB
7	WARNING LABEL
8	HANDLE
9	CABLE SLEEVE
10	CABLE SLEEVE
11	UP HOUSING DECORATIVE PLATE
12	UP HOUSING
13	SCREW
14	POWER CABLE PRESSPLATE
15	POWER CABLE JACKET
16	WATER PROOF RING
17	FAN COVER
18	FRONT FILTER
19	MOTOR&PUMP ASSY
20	WATER INLET CONNECTOR&FILTER
21	WATER INLET PROTECTIVE CAP
22	DOWN HOUSING
23	RATING LABEL
24	BUTTON
25	SCREW
26	ADJUSTABLE NOZZLE
27	MIDDLE POLE
28	GUN
29	HIGH PRESSURE HOSE
30	POWER CABLE & PLUG
31	SOAP BOTTLE
32	RUBBER O-RING

UK-EN20200221



## PUMP FOR MB-9234



NO.	DESCRIPTION
1	Oil cylinder assy
2	Swash plate
3	Gasket 8
4	Bolt M8X20
5	Bearing 51106
6	Pump body
7	Pump cover
8	Plunger oil seal 10x16x4
9	Oil seal bracket
10	Oil seal 10x16x4
11	Plunger assy
12	Outlet hose assy
13	Back pressure valve assy
14	Inlet checking valve assy
15	Outlet checking valve assy
16	Checking valve cap
17	O ring 9.5x1.8
18	Bolt M6X8
19	O ring 5.5x2.2
20	Inlet hose
21	O ring 10x2.2
22	O ring 10x2.2
23	U pin
24	O ring 58x2
25	On-off switch assy
26	Seal ring
27	Damping ring
28	Motor
29	Bolt ST5.5x20
40	Gasket 6
41	Bolt M6X55

UK-EN20200221