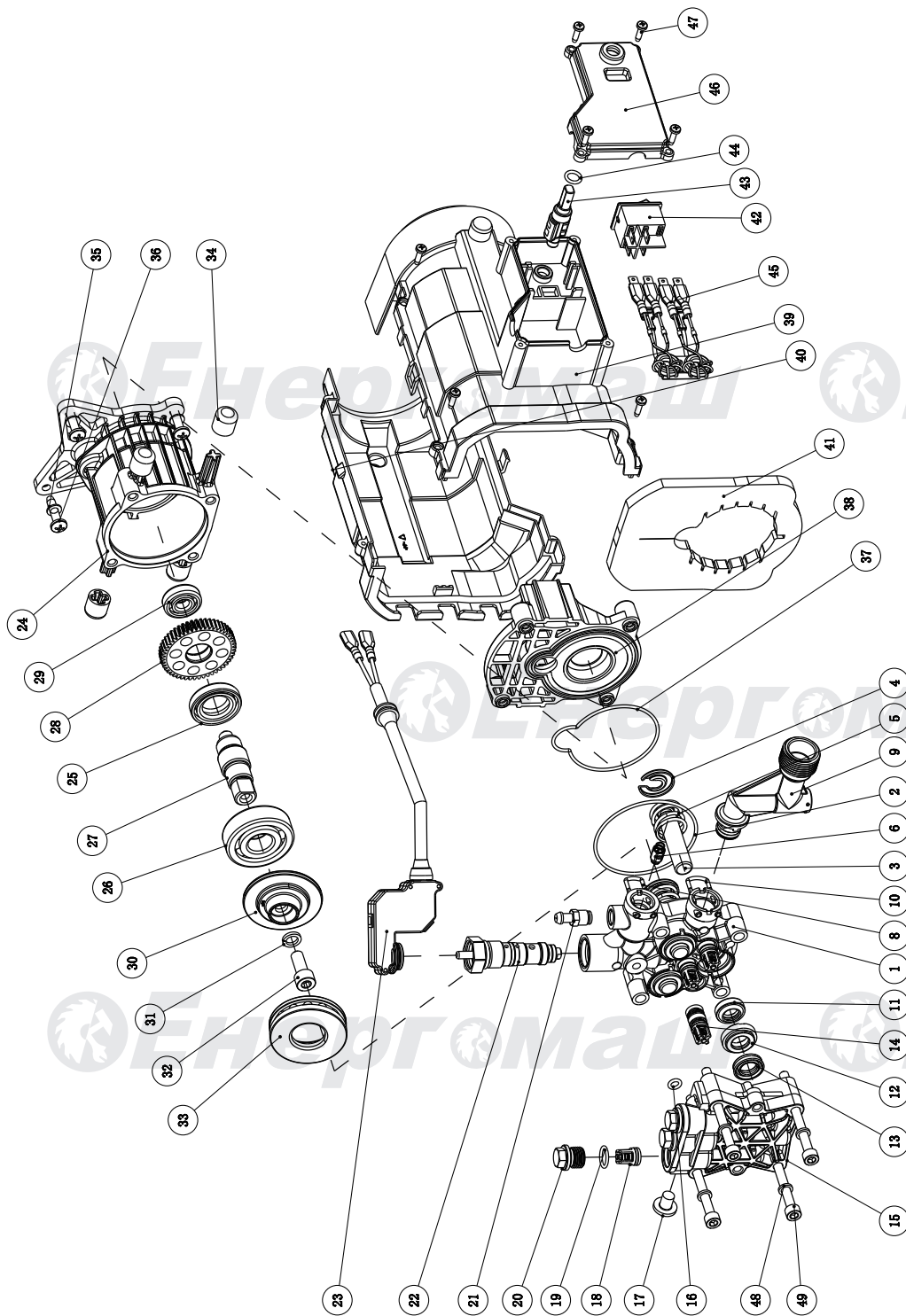


## MB-9235

NO.	DESCRIPTION	NO.	DESCRIPTION
1	GUN	26	HANDLE
2	ACCESSORIES HOLD	27	SCREW
3	CLEANING PIN	28	HANDEL SLEEVE
4	HIGH PRESSURE HOSE	29	POWER CABLE HOOK
5	WATER INLET CAP	30	INNER HIGH PRESSURE HOSE
6	WATER INLET CONNECTOR&FILTER	31	HOSE REEL BRACKET (LEFT)
7	ADJUSTABLE NOZZLE	32	WARINING LABEL
8	WHEEL COVER	33	RATING LABEL
9	WHEEL	34	HOSE REEL (LEFT)
10	DETERGENT TUBE	35	HOSE REEL AXIS PLATE
11	DETERGENT TANK CAP	36	HOSE REEL SIDE PLATE
12	BACK HOUSING	37	SCREW
13	DETERGENT TANK	38	SPLIT WASHER
14	CABLE JACKET	39	PRESSURE HOSE CONNECTOR(OUTER)
15	CABLE PRESS PLATE	40	RUBBER SEAL RING
16	SCREW	41	O RING 8X2
17	POWER CABLE & PLUG	42	PRESSURE HOSE CONNECTOR(INSIDE)
18	MOTOR&PUMP ASSY	43	SCREW
19	SWITCH KNOB	44	CLIP
20	OUTLET DECORATIVE PLATE	45	HOSE REEL (RIGHT)
21	FRONT HOUSING	46	HOSE REEL BRACKET(RIGHT)
22	WATER OUTLET COVER	47	ROCKING HANDLE SLEEVE
23	FRONT DECORATIVE PLATE(RIGHT)	48	ROCKING HANDLE
24	FRONT DECORATIVE PLATE(LEFT)	49	RUBBER O-RING
25	GUN HOLDER		



## PUMP FOR MB-9235

NO.	DESCRIPTION	NO.	DESCRIPTION
1	PUMP BODY	26	BEARING 6303
2	O RING 66X2	27	GEAR SHAFT
3	PLUNGER	28	BIG GEAR
4	PLUNGER CHUCK	29	BEARING 6200
5	PLUNGER SPRING	30	SWASH PLATE
6	BACK PRESSUER VALVE ASSY	31	SPRING WASHER 8
8	U PIN	32	BOLT M8X20
9	INLET HOSE ASSY	33	BEARING 51107
10	U PIN	34	DAMPING RING
11	PLUNGER OIL SEAL 12X20X5	35	WASHER 5
12	OIL SEAL BRACKET	36	SCREW
13	OIL SEAL 10X20X5.2	37	PEACH SHAPE SEAL RING
14	INLET CHECK VALVE ASSY	38	MOTOR ASSY
15	PUMP COVER	39	FAN COVER UP
16	O RING 5.5X2	40	FAN COVER DOWN
17	SCREW	41	FAN COVER FILTER
18	OUTLET CHECK VALVE ASSY	42	MAIN SWITCH
19	O RING 10.6X1.8	43	SWITCH DRIVING LEVEL
20	CHECK VALVE CAP	44	O RING 8X2
21	SIPHON ASSY	45	CAPACITOR & INDUCTOR ASSY
22	RELIEF VALVE ASSY	46	SWITCH COVER
23	MICRO-SWITCH ASSY	47	SCREW
24	OIL CYLINDER	48	SPRING WASHER 6
25	OIL SEAL 35X20X7	49	SCREW

UK-EN20200221