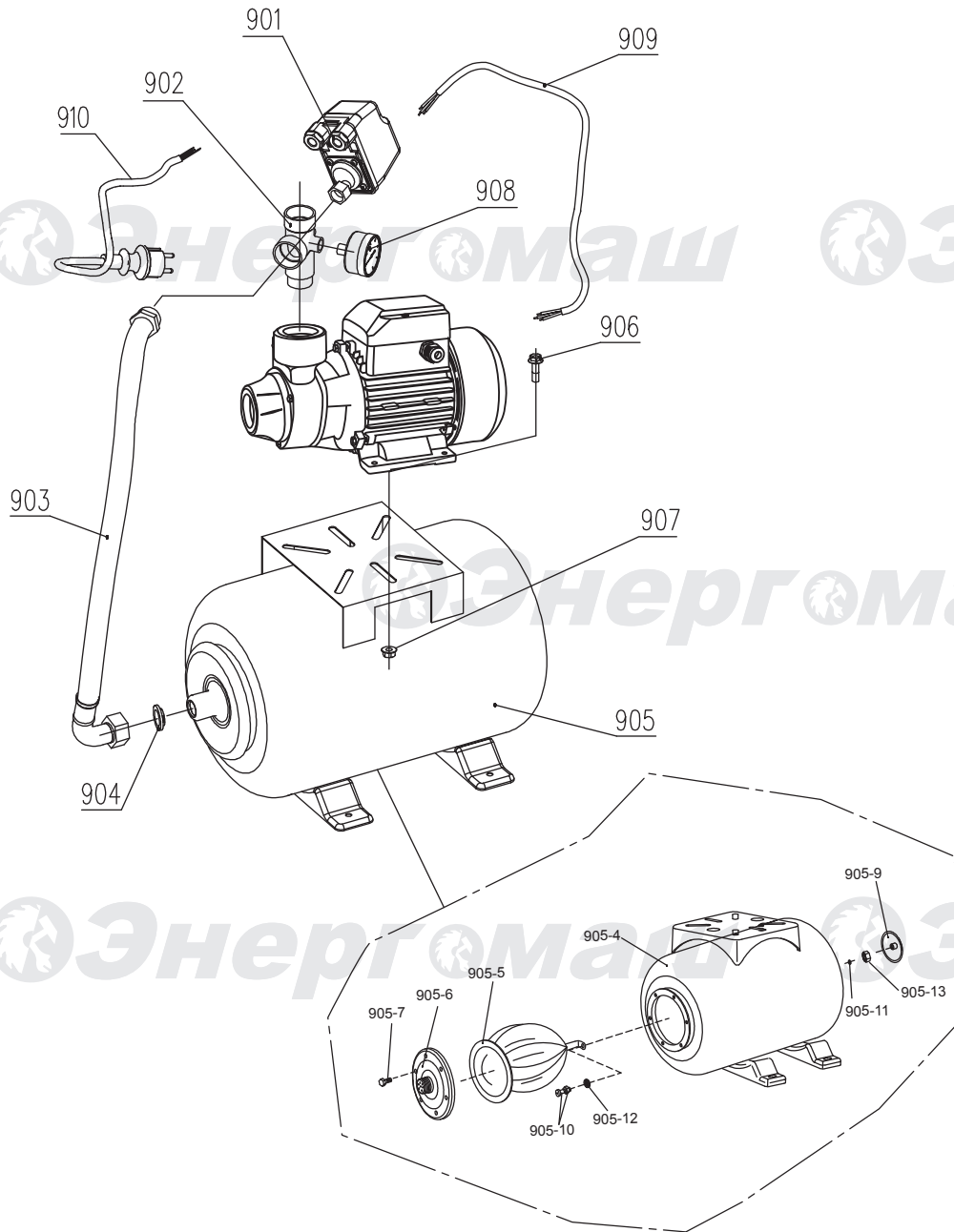


HG-97505

NO.	DESCRIPTION	NO.	DESCRIPTION
1	DUST-PROOF COVER	19	RIVET
2	BOLT	20	LABEL
3	PUMP BODY	21	CAPACITOR COVER
4	CHARGE PLUG	22	TERMINAL BOARD
5	"O" RING	23	BOLT
6	IMPELLER	24	MOTOR ASSEMBLY
7	CIRCLIP	25	BOLT
8	MECHANICAL SEAL ASSEMBLY	26	CAPACITOR
9	"O" RING	27	CABLE CLAMP
10	BOLT	28	GROUND TERMINAL
11	WASHER	29	CABLE SLEEVE
12	DROPS GUARD	30	CABLE
13	PUMP SUPPORT	31	WAVE RING
14	PIN	32	REAR COVER
15	BEARING 6201	33	FAN
16	ROTOR	34	FAN COVER
18	BOLT		

EN20131118



НГ-97505

NO.	DESCRIPTION
901	MECHANISM PRESSURE SWITCH
902	FIVE DIRECTION CONNECTOR
903	SOFT TUBE
904	SEALING WASHER
905	PRESSURE POT
905-4	PRESSURE POT BODY
905-5	WATER VESICLE
905-6	FLANGE
905-7	BOLT
905-9	VALVE COVER
905-10	VALVE
905-11	WASHER
905-12	PRESS PLATE
905-13	NUT
906	BOLT
907	NUT
908	PRESSURE METER
909	CORD
910	CORD&PLUG