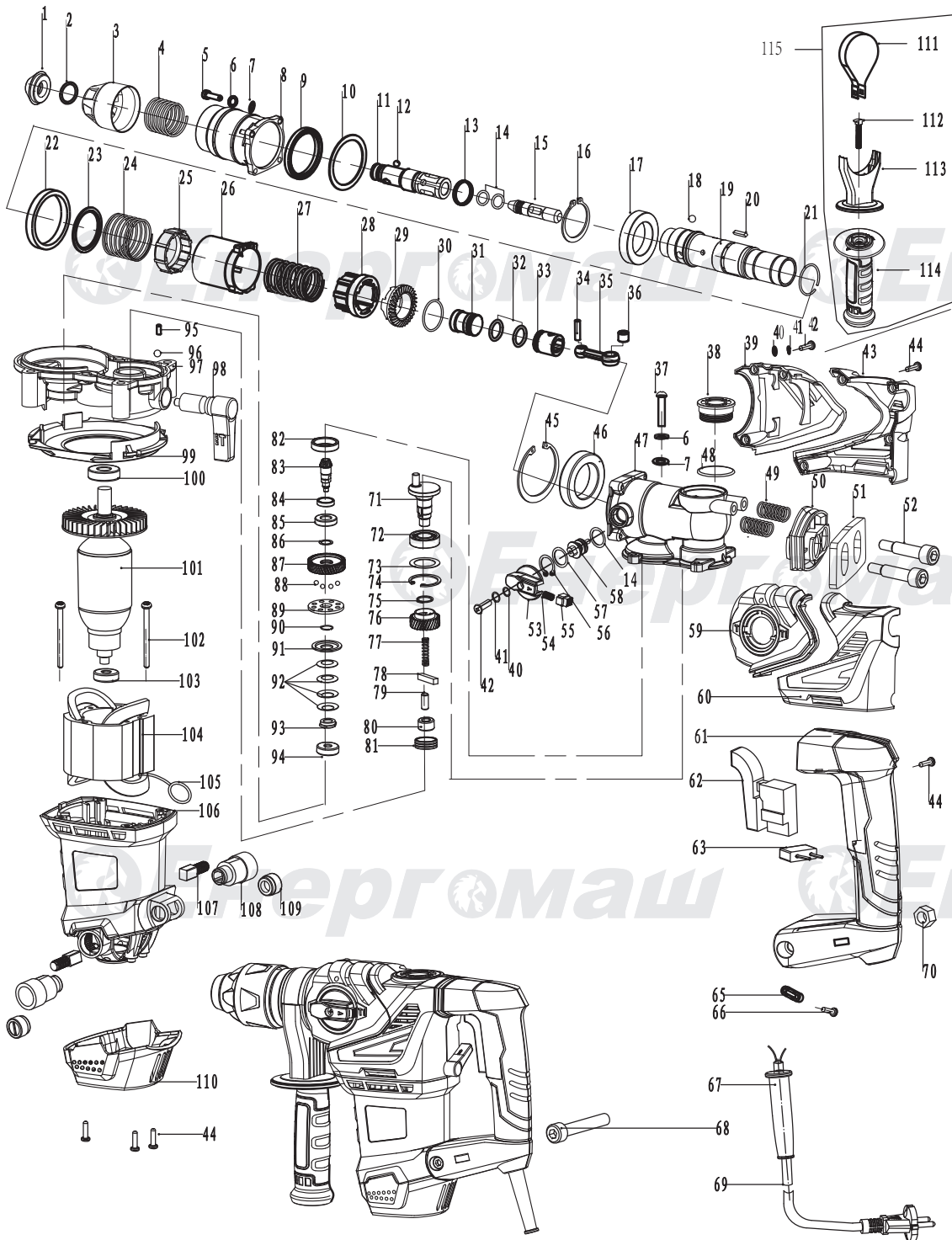


# PE-2542B



NO.	DESCRIPTION	NO.	DESCRIPTION
1	RUBBER HEAD	58	DIAL TWIST
2	STEEL RING 17.5*2	59	LEFT ALUMINIUM COVER
3	STEEL FRAME	60	LEFT PLASTIC COVER
4	SPRING 30.2*1.8*76	61	HANDLE
5	SCREW	62	SWITCH
6	WASHER	63	ELECTRIC CAPACITY
7	WASHER	65	CABLE BOARD
8	CYLINDER HOUSE	66	SCREW
9	OIL SEAL 35*51*6	67	CABLE SHEATH
10	WASHER 45*54.5*1	68	SCREW
11	TELEFLEX	69	CABLE
12	BALL Ø7.14	70	NUT M8
13	X-RING 20.9*2.2*4	71	ECCENTRIC SHAFT
14	O-RING 11*2	72	BEARING6003
15	IMPACT HAMMER	73	WASHER 34.5X28.5X1
16	WASHER	74	WASHER 35
17	BEARING 6907-RZ	75	WASHER 17
18	BALL Ø7.94	76	GEAR
19	CYLINDER	77	SPRING
20	FLAT KEY 3X2.5X18	78	FLAT KEY
21	RING 28X1.6	79	PIN
22	PLASTIC RING 47X55X7	80	BUSH
23	WASHER 38X47X1.5	81	STEEL SLEEVE 26X22X9
24	SPRING 42x2x28	82	OIL SEAL 35*51*6
25	PLASTIC SLEEVE	83	GEAR
26	CHISEL LOCK DISTANCE SLEEVE	84	WASHER
27	SPRING34*2.5*50	85	BEARING6002
28	CLUTCH	86	WASHER 14.1X19X0.5
29	GAMP GEAR	87	GEAR 39 TEETH
30	O-RING 28*1.8	88	BALL 5
31	RAMMER 25*30	89	FIXED PLATE
32	O-RING 19*3.1	90	STEEL RING
33	PISTON	91	ACTIVE PLATE
34	PISTON PIN 6*23.5	92	DISC SPRING
35	CONNECTING ROD	93	NUT M10*0.75
36	STEEL SLEEVE12*10*8	94	BEARING627
37	SCREW	95	RUBBER COLUMN
38	OIL COVER	96	BALL 4
39	RIGHT ALUMINIUM COVER	97	MIDDLE COVER
40	WASHER 4	98	TWISTING FOR HAMMER
41	FLAT WASHER 4	99	FAN GUIDE
42	SCREW M4*14	100	BEARING 6001Z
43	RIGHT ALUMINIUM COVER	101	ROTOR
44	SCREW ST3.9*16	102	SCREW
45	WASHER 18	103	BEARING 608Z
46	BUSH 30X47X9	104	STATOR
47	GEAR BOX	105	SPRING
48	O-RING 31.5X2	106	MOTOR HOUSING
49	ANTI-VIBRATION SPRING	107	BRUSH
50	ANTI-VIBRATION HOLDER	108	BRUSH HOLDER
51	ANTI-VIBRATION BOARD	109	BRUSH COVER
52	ANTI-VIBRATION SCREW M8*15	110	BACK COVER
53	TWO FUNCTION SWITCH	111	HOOP
54	SPRING 0.6*4.5*17.5	112	T-SHAPE SCREW M8*50
55	BUTTON PIN	113	BRACKET
56	WASHER 18	114	AUXILIARY HANDLE
57	WASHER	115	AUXILIARY HANDLE ASS