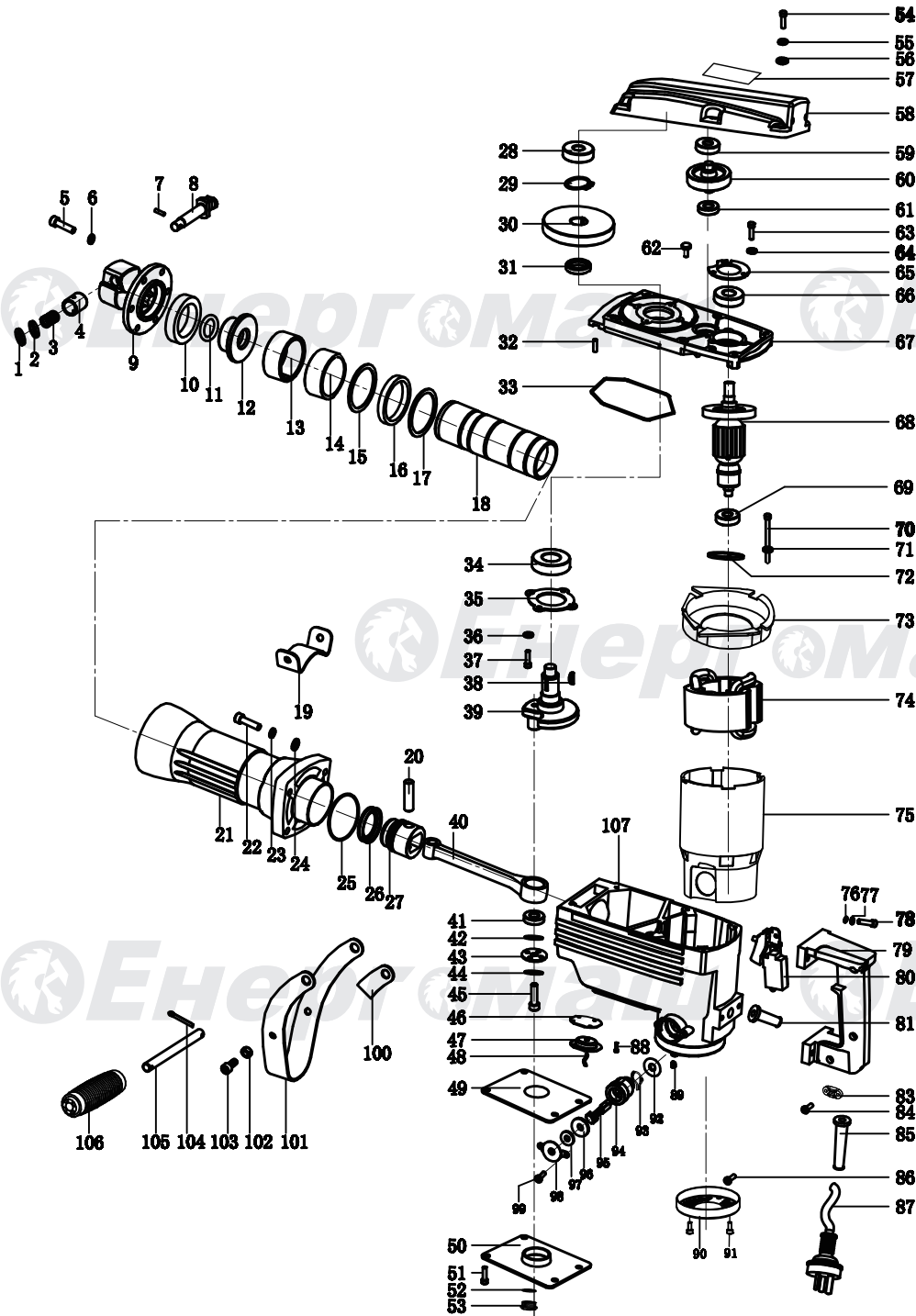


PE-2520



NO.	DESCRIPTION	NO.	DESCRIPTION
1	Washer	55	Flat wahser
2	Washer	56	Flat wahser
3	Spring	57	Sticker
4	Lock sleeve	58	Gear cover
5	M10X40 screw	59	6201 bearing
6	Ø 10 flat washer	60	Gear
7	4X18pin	61	6001 bearing
8	Lock rod	62	Screw M5X12
9	Iron head	63	Screw M5X12
10	Dampling ring	64	Ø 5 flat washer
11	23.5X5.1seal ring	65	6203bearing cover
12	positioning sleeve	66	6203 bearing
13	Mouse	67	Inner cover
14	Mouse cover	68	Rotor
15	Mouse washer	69	6201 bearing
16	Damper	70	≈ 5 flat washer
17	Mouse washer	71	5X60screw
18	Cylinder	72	Spring wahser
19	Hoop	73	Fan shroud
20	12X44piston pin	74	Stator
21	Cylinder case	75	Motor protector
22	8X34 screw	76	Ø 6 flat washer
23	Ø 8spring washer	77	Ø 6 spring wahser
24	Ø 8flat washer	78	6X25 screw
25	62X2.5seal ring	79	handle
26	Piston ring	80	Switch
27	Piston	81	Guard
28	6302 bearing	83	Plate
29	Ø 22shaft clip	84	4X14screw
30	Gear	85	Cable guard
31	Distance ring	86	4X16 screw
32	5X12pin	87	Cable plug
33	7seal ring	88	M5X8screw
34	6205 bearing	89	Screw M4X12
35	6205 bearing cover	90	Rear cover
36	Ø 5 flat washer	91	M5X12screw
37	M5X14screw	92	Carbon brush washer
38	4X16key	93	Brush terminal
39	Eccentric shaft	94	Brush cap
40	Connecting rod	95	Carbon brush
41	Needle bearing	96	Brush holder
42	Flat washer	97	Carbon brush washer
43	5hole gland	98	Brush cover
44	Flat washer	99	Screw M4X12
45	M8X25screw	100	Rubber sleeve
46	Bowl washer	101	Handle holder
47	Bowl	102	M8 nut
48	Oil wick	103	8X16 screw
49	Fuel cap pad	104	Opening bolt
50	Fual cap	105	Handle spindle
51	M5X12screw	106	Handle
52	Oil hole seal ring	107	Motor housing
53	Oil hole		
54	6X45screw		