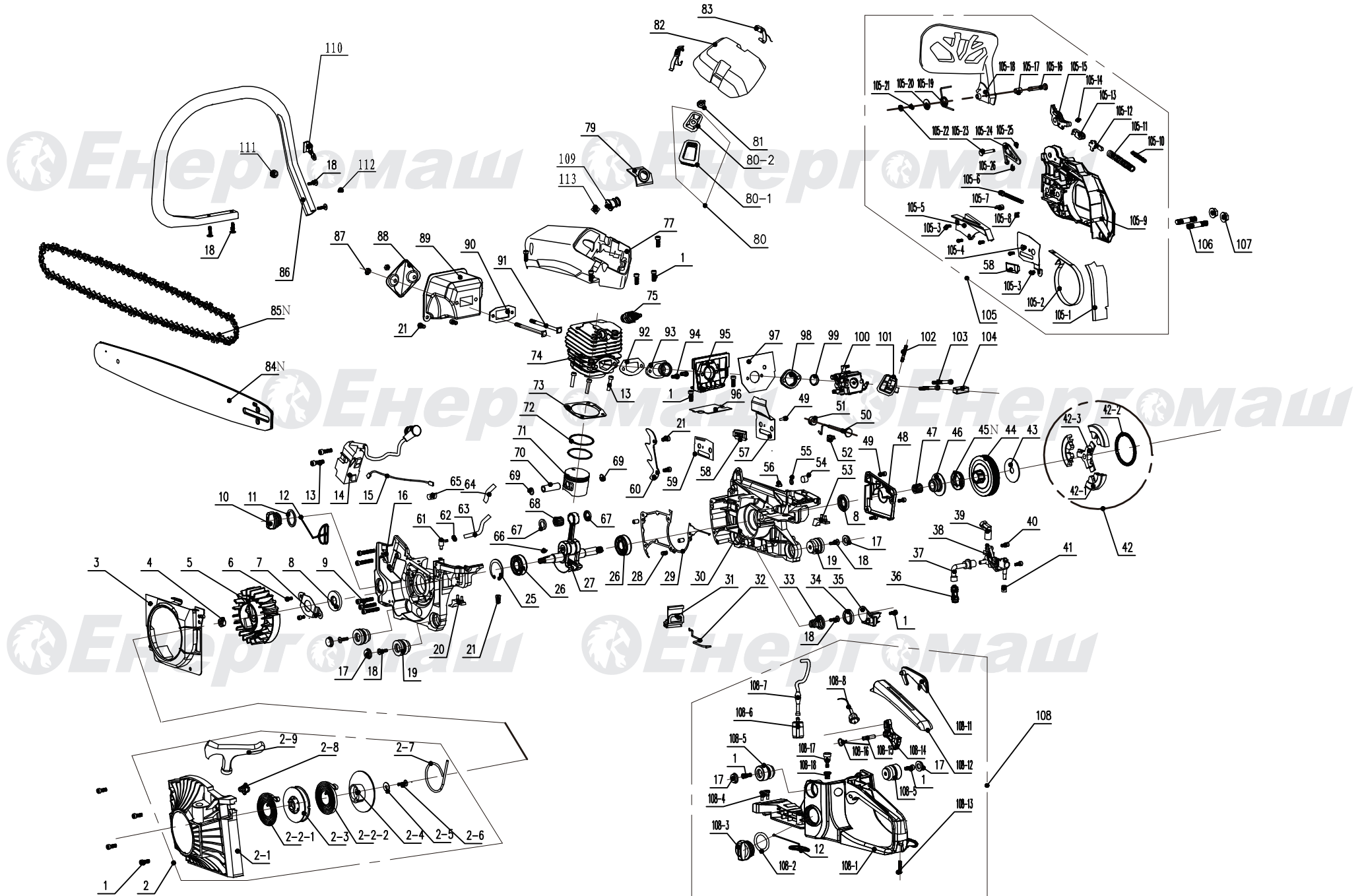


# ПТ-9945М2 ПТ-9952М2



## ПТ-9945М2 ПТ-9952М2

NO.	DESCRIPTION	NO.	DESCRIPTION	NO.	DESCRIPTION
1	SCREW M5X14	47	NEEDLE BEARING	103	SCREW M5X50
2	START ASSEMBLY	48	COVER PLATE	104	SHOCK BLOCK
2-1	START COVER	49	SCREWM4X10	105	BRAKE ASSEMBLY
2-2-1	SAMLL COIL SPRING	50	CHOKE ROD	105-1	DUST SHIELD
2-2-2	BIG COIL SPRING	51	CHOKE ROD FIXATION ROOT	105-2	BRAKE STRAP
2-3	BIG ROPE WHEEL	52	CHOKE ROD SHOCK BLOCK	105-3	SCREW ST4X8
2-4	SMALL ROPE WHEEL	53	CASE SHOCK BLOCK	105-4	TENSIONER COVER PLATE
2-5	PLAIN WASHER	54	SPONGE COVER	105-5	BRAKE SPRING COVER PLATE
2-6	SCREW ST5X14	55	VENT CIRCLIP	105-6	TENSION SCREW
2-7	START ROPE	56	VENT	105-7	TESNTION BOLT
2-8	WASHER	57	DAMPER	105-8	TENSION BLOCK
2-9	START HANDLE	58	CHAIN GUIDE BLOCK	105-9	RIGHT SIDE COVER
3	GUIDE FLOW COVER	59	TENSIONER COVER PLATE	105-10	BRAKE SPRING
4	NUT M8X1	60	PINION RACK	105-11	BIG BRAKE SPRING
5	FLY WHEEL	61	SUCTION JET	105-12	BRAKE SPRING SUPPORT
6	SCREW M4X8	62	SUCTION TUBE CIRCLIP	105-13	BRAKE ROD
7	OIL SEAL COVER	63	SUCTION TUBE	105-14	BRAKE ROD PIN
8	OIL SEAL	64	PROTECTION COVER	105-15	BIG BRAKE ROD
9	SCREW M5X30	66	KEY 3XΦ10	105-16	FRONT DAMPER PIN
10	OIL COVER	67	NEEDLE BEARING RING	105-17	FRONT DAMPER PIN COVER
11	OIL COVER SEAL	68	NEEDLE BEARING	105-18	FRONT DAMPE
12	ANTI-DROP PLATE	69	PISTON PIN CIRCLIP	105-19	BRAKE TORSIONAL SPRING
13	SCREW M5X20	70	PISTON PIN	105-20	WASHER
14	IGNITER	71	PISTON	105-21	E CIRCLIP
15	EXTINCTION CONDUCTOR	72	PISTON RING	105-22	BRAKE BUSH
16	LEFT CRANK CASE	73	CYLINDER SEALING PLATE	105-23	POSITION BUSH
17	SHOCK SEATCOVER	74	CYLINDER	105-24	POSITION BOARD
18	TAPPING SCREW ST5X14	75	SPARK PLUG	105-25	E CIRCLIP
19	SHOCK SEAT	77	BIG AIR FILTER COVER	105-26	E CIRCLIP
20	LEFT CASE CUSHING BLOCK	79	IGNITER COVER	106	BOLT M8X42
21	SCREW M5X10	80	AIR FILTER ASSEMBLY	107	NUT M8
25	CIRCLIP	80-1	AIR FILTER	108	BASE ASSEMBLY
26	BEARING 6202	80-2	AIR FILLTER COVER	108-1	BASE
27	CRANK	81	AIR FILTER LOCKING NUT	108-2	FUEL COVER SEAL RING
28	PIN 6X10	82	SMALL COVER	108-3	FUEL COVER
29	CASE BODY SEALING PLATE	83	SMALL COVER LOCKING BUTTON	108-4	SHOCK RUBBER
30	RIGHT CASE	84N	GUIDE BAR	108-5	SHOCK RUBBER GLAND
31	ANTI-DUST BLOCK	85N	SAW CHAIN	108-6	FUEL FILTER
32	THROTTLE ROD	86	HANDLE	108-7	FUEL TUBE
33	CONICAL SPRING	87	NUT	108-8	FLAMEOUT SWITCH
34	CONICAL SPRING BASE	88	MUFFLER COVER	108-11	TRIGGER CONTROL RACK
35	CHAIN SHIELD	89	MUFFLER	108-12	HANDLE COVER
36	OIL FILTER	90	MUFFLER WASHER	108-13	SCREW ST4X14
37	OIL TUBE	91	BOLT M5X84	108-14	TRIGGER
38	OIL PUMP	92	AIR INTAKE TUBE WASHER	108-15	TRIGGER PIN
39	NOZZLE	93	AIR INTAKE TUBE	108-16	TRIGGER TORSIONAL SPRING
40	SCREW M4X14	94	SCREW M5X12	108-17	BALANCER
41	SPONGE TRANSITION COIL	95	CARBURETOR SUPPORT	108-18	BALANCER ROOT
42	CLUTCH	96	SUPPORT WASHER	109	ANTI-VIBRATIN BLOCK
42-1	CLUTCH BLOCK	97	SEALING PLATE	110	CONNECTION PIECE
42-2	CLUTCH SPRING	98	AIR INTAKE TUBE FLANGE	111	NUT M5
42-3	CLUTCH RETAINER	99	BUSH	112	SCREW M5X10
44	CLUTCH SHELL	100	CARBURETOR	113	NUT M5
45N	SPROCKET	101	AIR INTAKE BEND TUBE		
46	WORM	102	BOLT M5X39		