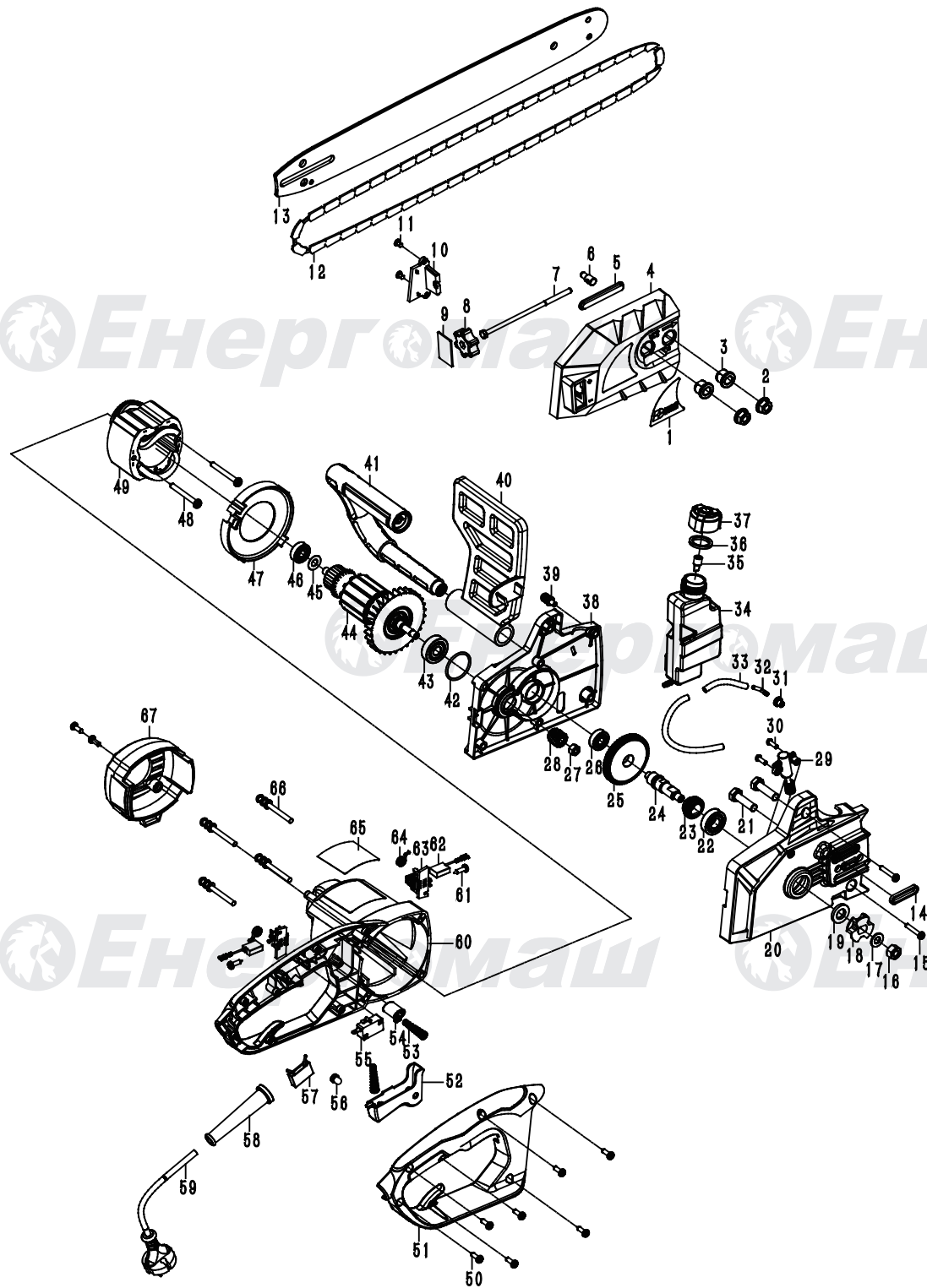


## ПЦ-9918



NO.	DESCRIPTION	NO.	DESCRIPTION
1	LEBAL	38	Middle cover
2	NUT M8	39	Screw m5x18
3	PRESSING SLEEVE	40	Baffle
4	SPROCKET COVER PLATE	41	Front handle
5	OIL PROOF PAD	42	O-ring 32X2
6	GUIDE PLATE ADJUSTING PIN	43	Bearing 6200-2RS
7	BOLT M5X135	44	Rotor
8	ADJUSTING KNOB	45	Gasket $\phi$ 8x $\phi$ 17x0.5
9	SQUARE GASKET	46	Bearing 608-2rs
10	ADJUSTING KNOB PRESSING PLATE	47	Windshield
11	SCREW ST4.2X14	48	Screw st4x55
12	CHAIN	49	Stator
13	GUIDE PLATE	50	Screw st4x14
14	RING WASHER	51	Handle cover
15	SCREW ST5 x 40	52	Switch trigger
16	HEXAGON NUT M8 - LEFT	53	Switch trigger spring
17	FLAT WASHER $\phi$ 8.5X $\phi$ 16X1.5	54	Switch self-locking button
18	SPROCKET	55	Microswitch
19	FLAT GASKET $\phi$ 22X $\phi$ 12X3.5	56	Wiring cap
20	GEARBOX	57	Capacitance 0.22
21	HEXAGON BOLT M8X30	58	Sheath
22	BEARING 6001-2RS	59	Cable
23	WORM	60	Housing
24	OUTPUT SHAFT	61	Screw st4x12
25	BIG GEAR WHEEL	62	Carbon brush
26	BEARING 608-ZZ	63	Brush holder
27	HEXAGON NUT M7	64	Coil spring
28	PINION	65	Nameplate
29	OIL PUMP ASSEMBLY	66	Screw m5x50
30	SCREW M4X12	67	Rear cover
31	OIL PROOF SLEEVE	888	
32	OUTLET NOZZLE	889	
33	TUBING		
34	OIL POT		
35	SEALING RING OF OIL POT		
36	RESPIRATOR		
37	OIL POT LID		