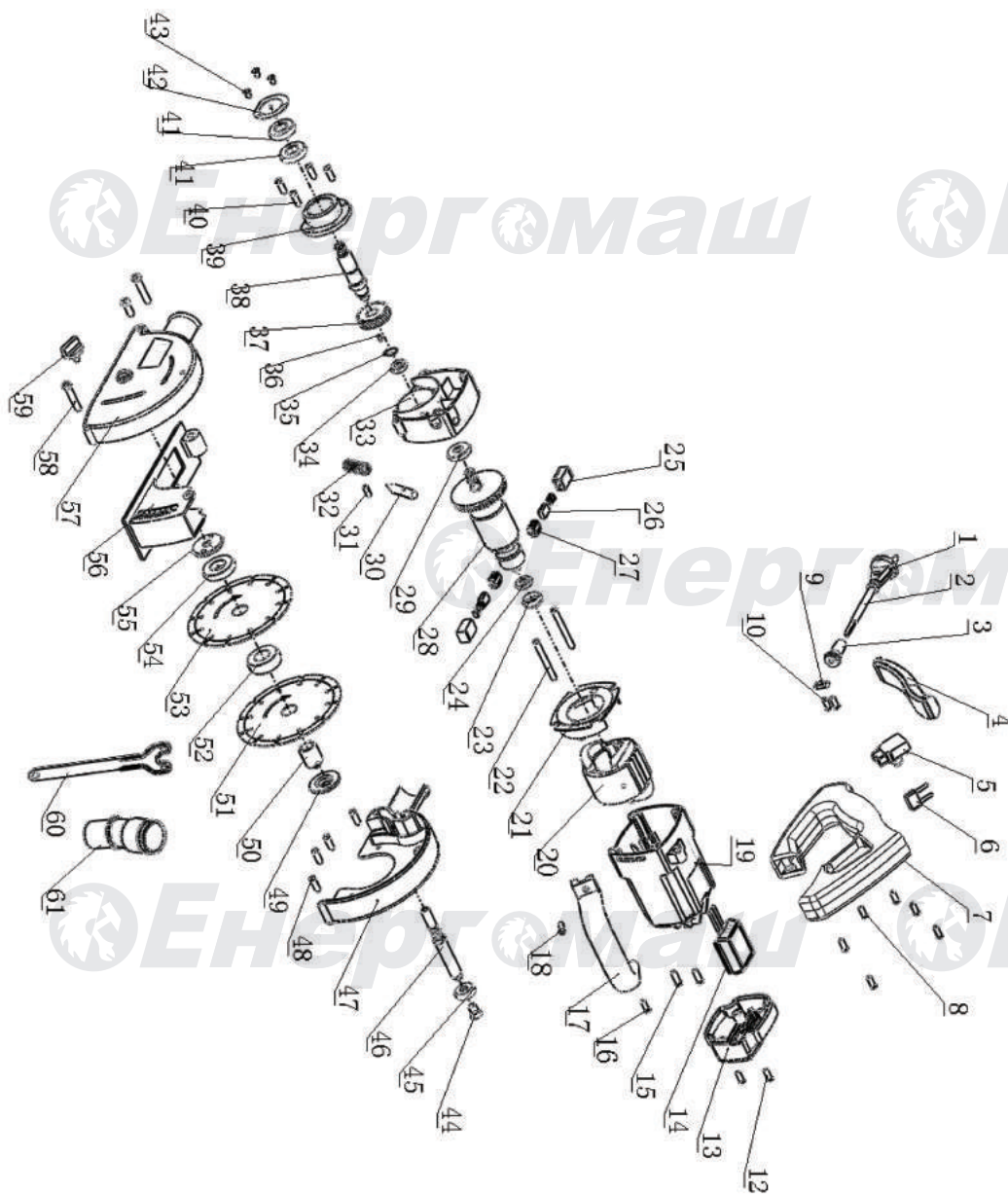


## УШМ-8150Ш



NO.	DESCRIPTION	NO.	DESCRIPTION
1	PLUG	32	SPRING
2	CABLE	33	GEARBOX
3	CABLE COAT	34	BEARING 608Z
4	SOFT HANDLE	35	SHAFT RETAINER
5	SWITCH	36	KEY
6	CAPACITANCE	37	GAER
7	HANDLE	38	OUTPUT SHAFT
8	SCREW	39	GEAR COVER
9	IMPACTED PLANK	40	SCREW
10	SCREW	41	BEARING 6003Z
12	SCREW	42	BEARING PLATE
13	COVER	43	SCREW
14	SOFT START	44	SCREW
15	SCREW	45	ROLLER
16	SCREW	46	SUPPORT SHAFT
17	DEPUTY HANDLE	47	FIXED HOOD
18	SCREW	48	SCREW
19	CHASSIS	49	LOWER PLATEN
20	STATOR	50	LOCATING RING
21	WIND RING	51	SAW
22	SCREW	52	LONG DISTANCE RING
23	BEARING SLEEVE	53	SAW
24	BEARING 608Z	54	SHORT DISTANCE RING
25	BRUSH HOLDER	55	UPPER PLATEN
26	COPPER SETS	56	BACKPLANE
27	BRUSH	57	FIXED HOOD
28	ROTOR	58	SCREW
29	BEARING 6001Z	59	LOCKING KNOB
30	THE STOPPER SHAFT	60	WRENCH
31	LOCATING PINS	61	VACUUM TUBE

UK-EN20161227