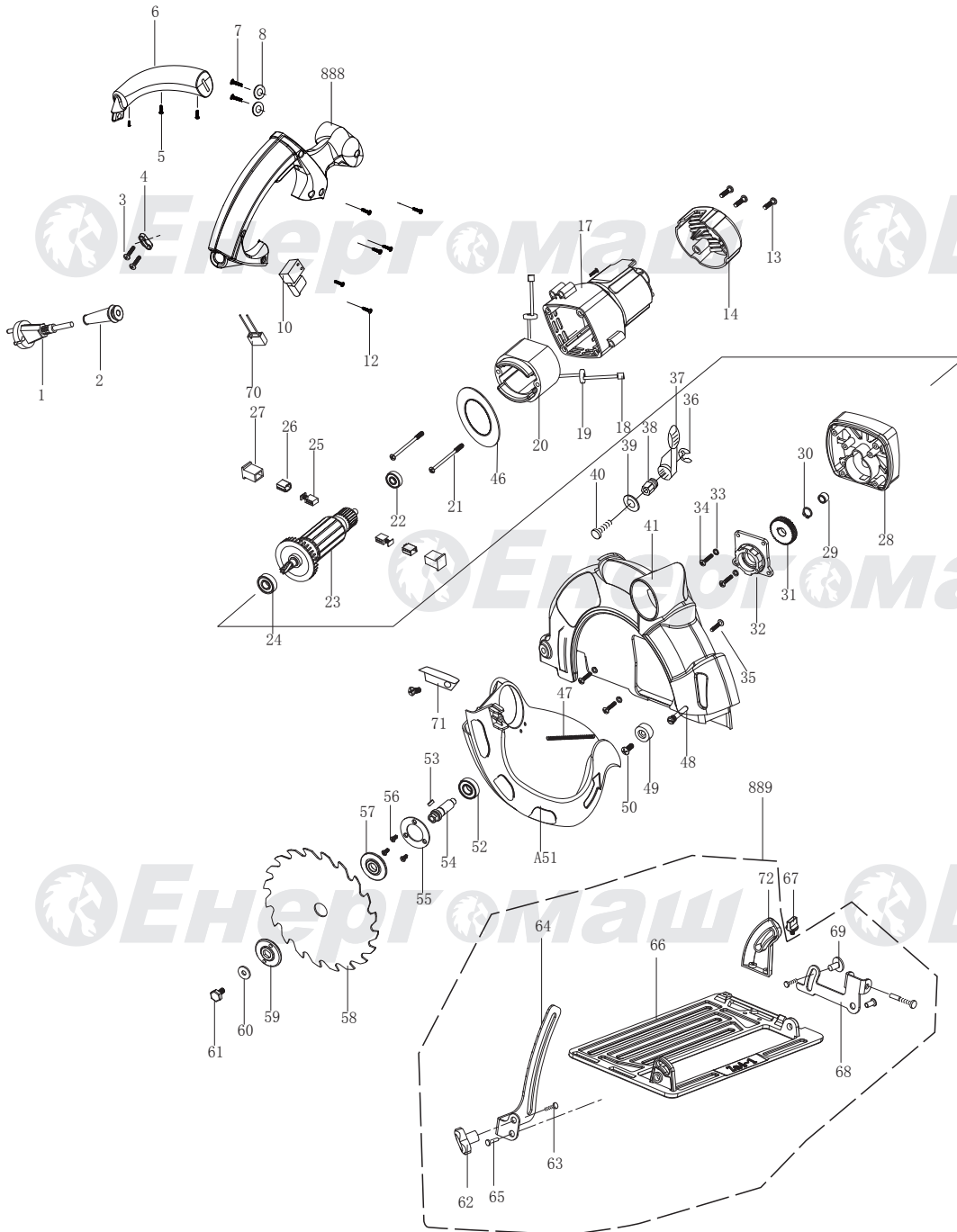


ЦП-50185А



NO.	DESCRIPTION	NO.	DESCRIPTION
1	CORD & PLUG	38	LOCK NUT
2	CORD SLEEVE	39	WASHER
3	SCREW	40	LOCK SCREW
4	CORD CLAMP	41	FIXED GUARD
5	SCREW	46	WIND GUIDE
6	AUXILIARY HANDLE	47	SPRING
7	SCREW	48	SCREW
8	WASHER	49	RUBBER BLOCK
10	SWITCH	50	SCREW
12	SCREW	51	MOVING GUARD
13	SCREW	52	BEARING 6001Z
14	REAR COVER	53	KEY
16	PLATE WASHER	54	SPINDLE
17	HOUSING	55	BEARING PRESS PLATE
18	INSERT PIECE	56	SCREW
19	INDUCTOR	57	INNER FLANGE
20	STATOR	58	BLADE
21	SCREW	59	OUTER FLANGE
22	BEARING 608Z	60	WASHER
23	ROTOR	61	HEX SCREW
24	BEARING 6000Z	62	ANGLE LOCKING KNOB 1
25	CARBON BRUSHER	63	SCREW
26	CARBON BRUSHER NEST	64	DEPTH STAND
27	CARBON BRUSHER HOLDER	65	RIVET
28	GEAR BOX	66	BASE PALTE
29	NEEDLE BEARING HK0808	67	PARALLEL GUIDE KNOB
30	CRICLIP	68	ANGLE STAND 1
31	GEAR	69	ANGLE LOCKING KNOB 2
32	GEAR BOX COVER	70	CAPACITOR
33	WASHER	71	MOVING GUARD KNOB
34	SCREW	72	ANGLE STAND 2
35	SCREW	888	HANDLE ASSEMBLY
36	CRICLIP	889	BASE ASSEMBLY
37	DEPTH LOCK BUTTON		

UK-EN20170712