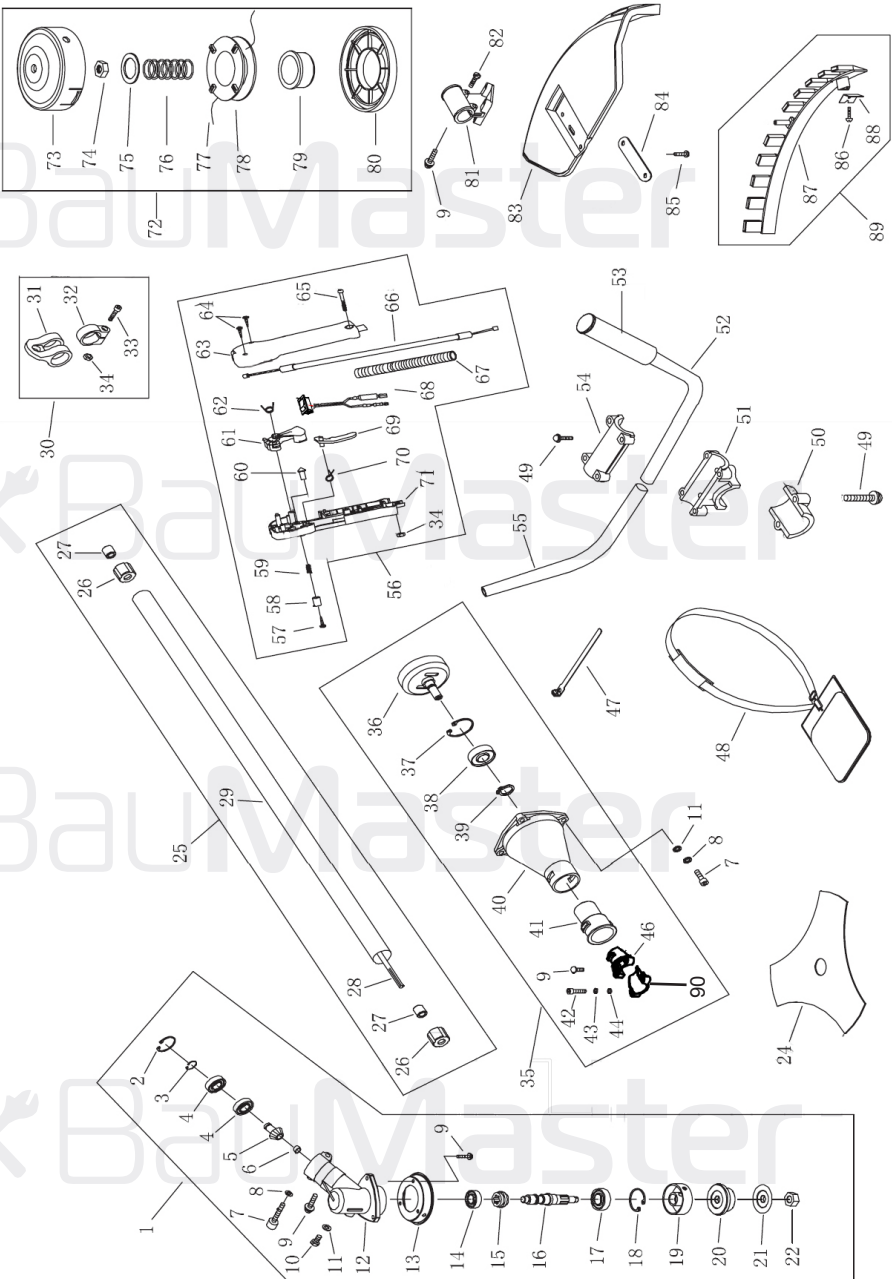
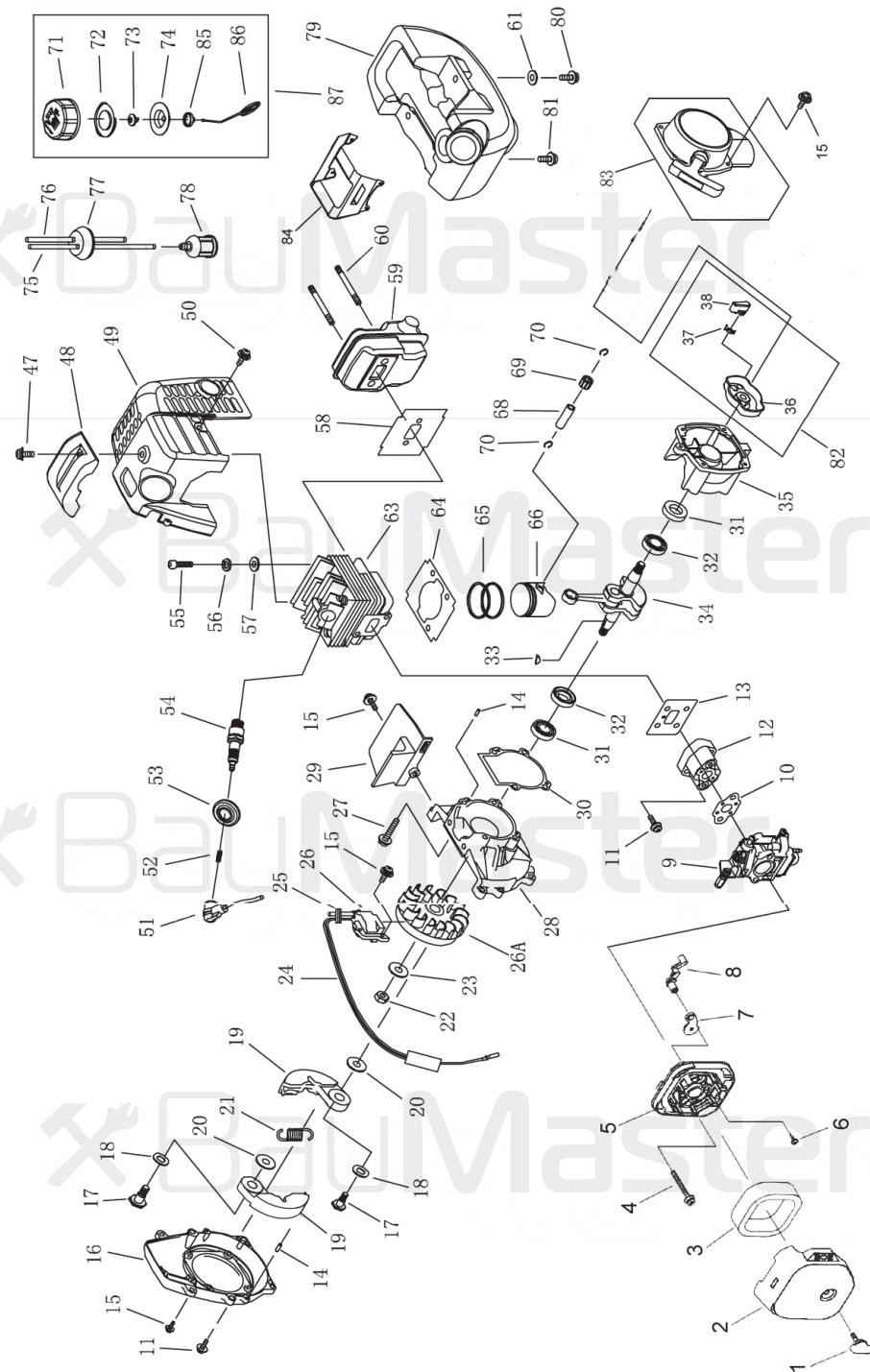


# BT-89261X



NO.	DESCRIPTION	NO.	DESCRIPTION	NO.	DESCRIPTION
1	GEAR CASE ASSY	31	HARNES CLAMP	61	HAND GRIP
2	STOP RING	32	CLAMP	62	SPRING
3	STOP RING	33	SCREW M5X20	63	BOX RIGHT
4	BEARING 6000Z	34	NUT M5	64	SCREW ST2.9X18
5	PINION	35	CLUTCH COMP	65	SCREW M5X30
6	STEEL PLATE	36	CLUTCH DRUM COMP	66	CABLE COMP
7	CAPSCREW M5X20	37	STOP RING	67	TUBE
8	WASHER	38	BEARING 6202	68	STOP BUTTON COMP
9	SCREW M5X20	39	STOP RING	69	HAND GRIP
10	BOLT M6X12	40	UNKER	70	SPRING
11	WASHER	41	RUBBER COVER	71	BOX LEFT
12	GEAR CASE	42	SCREW M5X25	72	NYLON CUTTER HAND
13	BLADE COVER	43	WASHER	73	CASE
14	BEARING 6000Z	44	WASHER	74	LEFT NUT
15	GEAR	46	CLAMP	75	WASHER
16	SHAFT	47	WIRE CLAMP BAND	76	SPRING
17	BEARING6002	48	HARNES ASSY	77	NYLON CORD
18	STOP RING	49	BOLT M5X25	78	CORD HOLDER
19	HOLDER	50	CAPLOWER	79	PLATEN
20	HOLDER	51	BRACKET	80	COVER
21	HOLDER	52	HANDLE	81	BRACKET
22	LEFT NUT	53	GRIP LEFT	82	SCREW M5X30
24	BLADE	54	CAP OPPER	83	SAFETY GUARD
25	PIPE COMP	55	HANDLE	84	WASHER
26	RUBBER COVER	56	LEVER ASSY	85	SCREW M5X16
27	OIL BEARING	57	SCREW ST2.9X13	87	GUARD
28	DRIVE SHAFT	58	BUTTON	88	BLADE
29	PIPE	59	SPRING	89	GUARD ASSY
30	HOLDER ASSY	60	CLOCK PIN	90	DOWN CLAMP

EN20131120



## ЭЛЕКТРОДВИГАТЕЛЬ ДЛЯ ВТ-89261Х

NO.	DESCRIPTION	NO.	DESCRIPTION	NO.	DESCRIPTION
1	SCREW	29	GUIDE PLATE	69	NEEDLE BEARING
2	CLEANER OUTSIDE COVER	30	CRANK CASE GASKET	70	PISTON PIN CIRCLET
3	CLEANER ELEMENT	31	OIL SEAL	71	FUEL TANK LID
4	SCREWM5X55	32	BALL BEARING 6001	72	GASKET
5	CLEANER INSIDE COVER	33	KEY	73	AIRINLET MOUTH
6	SCREW ST4.2X12	34	CRANK SHAFT COMP	74	INSIDE COVER
7	CHOKE	35	REAR HALF CRANK CASE	75	OUTLET FUEL PIPE
8	CHOKE HANDER	36	STARTER PULEY ASSY	76	INLET FUEL PIPE
9	CARBURETOR	37	STARTER PAWL SPRING	77	PRIMARY CORD GROMMET
10	GASKET	38	STARTER PAWL	78	CLEANER
11	SCREW M5X20	47	SCREWM5X14	79	FUEL TANK
12	INLET MANIFOLD	48	COVER	80	SCREW M5X16
13	CYLINDER WASHER	49	COVER	81	SCREW M5X16
14	PIN	50	SCREWM4X12	82	STARTER PULLEY ASSY
15	SCREW M4X16	51	PLUG CAP	83	STARTER
16	FAN COVER	52	CUCK SPRING	84	BACKET
17	CLUTCH STEP SCREW	53	PLUG COVER	85	LID
18	WASHER	54	SPARK PLUG	86	CHAIN
19	CLUTCH SHOE COMP	55	SCREWM5X20	87	FUEL TANK LID COMP
20	WASHER	56	WASHER		
21	CLUTCH SPRING	57	WASHER		
22	NUT M8	58	GASKET		
23	WASHER	59	MUFFER COMP		
24	STOP CORD GROMMET	60	BOLT		
25	PRIMARY CORD GROMMET	63	CYLINDER		
26	MAGNETO STATOR	64	CYLINDER WASHER		
26A	MAGNETO ROTOR	65	PISTON RING		
27	SCREW M5X25	66	PISTON		
28	FRONT HALF CRANK CASE	68	PISTON PIN		

EN20131120