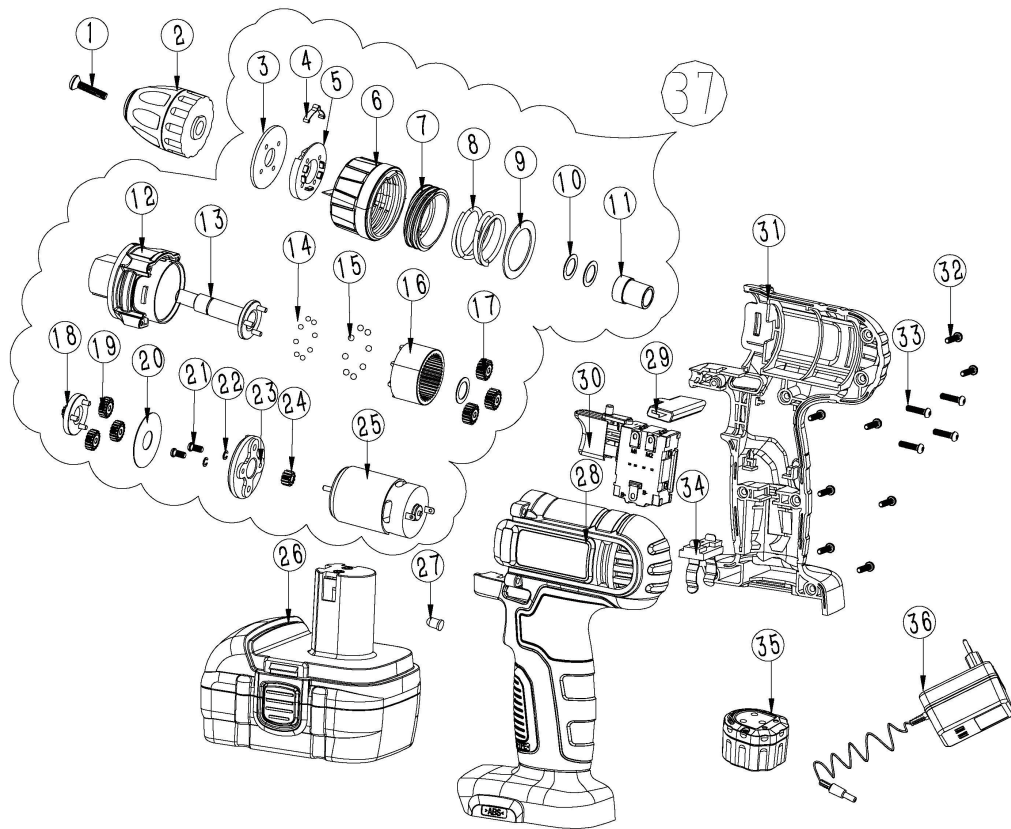


ДШС-31121/ДШС-31181



| NO. | DESCRIPTION | NO. | DESCRIPTION |
|-----|--------------------------|------|----------------------------|
| 1 | SCREW | 21 | M-SCREW |
| 2 | CHUCK | 22 | SPRING WAHSER |
| 3 | FOUR HOLE PLATE | 23 | MOTOR PLATE |
| 4 | STAMPING SPRING HOLDER | 24 | PIOION |
| 5 | PLASTIC SPRING HOLDER | 25 | MOTOR 18V |
| 6 | CLUCTH CAP | 25-B | MOTOR 12V |
| 7 | TORQUE SLEEVE INNER RING | 26 | BATTERY PACK 18V |
| 8 | SPRING | 26-B | BATTERY PACK 12V |
| 9 | WAHSER | 27 | LED |
| 10 | WAHSER | 28 | SUPPORT HOUSE |
| 11 | BUSH | 29 | F/R LEVER |
| 12 | GEAR BOX | 30 | SWITCH |
| 13 | SPINDLE | 31 | COVER HOUSE |
| 14 | 3MM STEEL BALL | 32 | SCREW |
| 15 | 4MM STEEL BALL | 33 | SCREW |
| 16 | RING GEAR | 34 | BODY CONTACT PIECE BRACKET |
| 17 | 2ND PLANE GEAR | 35 | Charge stand |
| 18 | SUN GEAR | 36 | adaptor |
| 19 | 1ST PLANE GEAR | 37 | GEAR BOX ASSEMBLED |
| 20 | WAHSER | | |