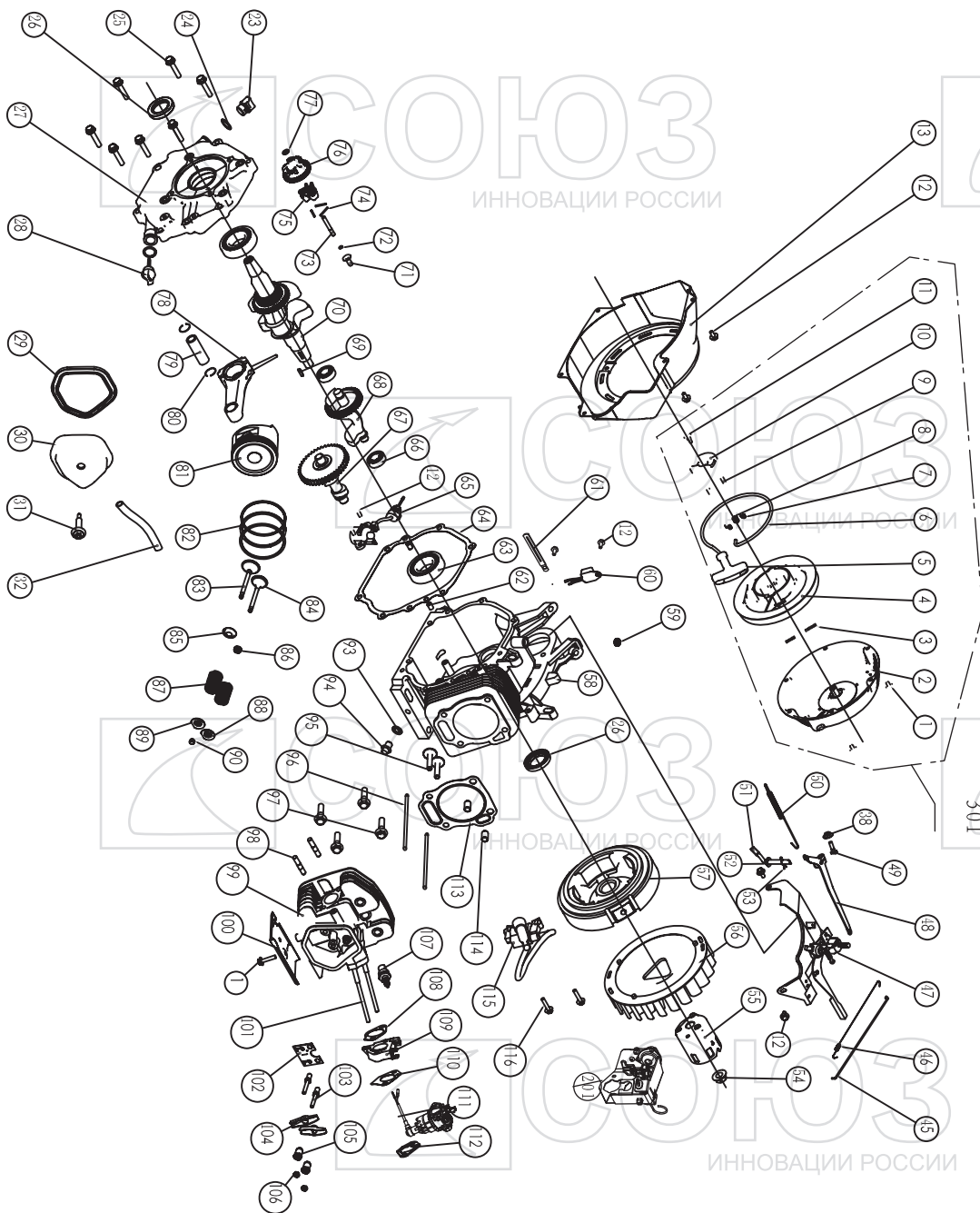


ЭГС-8750

NO.	DESCRIPTION	NO.	DESCRIPTION
1	BOLT M6X12	37	FUEL TANK CAP
2	SWITCH	38	SCREW M5X6
3	CONTROL PANEL	39	FUEL METER ASSY
4	DIODE ASSY	40	BOLT M6X25
6	AC CIRCUIT BREAKER	41	WASHER 6
7	RECEPTACLE(AC)	42	RUBBER
8	CASE	56	NUT M6
9	BOLT M5X10	57	AIR CLEANER STAY
10	GENERATOR END COVER	58	AIR CLEANER CASE COMP
11	BOLT M6X10	59	AIR CLEANER SEAL
12	TERMINAL	60	NUT M5
13	DIODE ASSY	61	SEPARATOR
14	AVR	62	ELEMENT
15	BRUSH ASSY	63	AIR CLEANER COVER COMP
16	END COVER	64	CONTROL ASSY
17	FLANGE BOLT M6X179	65	BOLT
18	STATOR COVER	66	MUFFLER GASKET
19	FLANGE BOLT M10X1.25X265	67	EX PIPE
20	STATOR ASSY	68	BOLT M8X25
21	ROTOR COMP	69	MUFFLER
22	COVER	70	MUFFLER INNER PROTCTOR
23	CRANKCASE COVER	71	MUFFLER LIFE PROTECTOR
24	O-RING	72	MUFFLER OUTER PROTECTOR
25	OIL FILLER CAP	73	BOLT M8X20
26	ENGINE	74	MUFFLER STAY
27	FRAME RUBBET	101	VOLTMETER
28	NUT M8	104	D.C 10A BREAKER
29	BOTTOM RUBBER 1	105	EARTH BOLT
30	FRAME	202	RECEPTACLE(DC)
31	BOTTOM RUBBER 2	203	PLASTIC SLEE E
32	CLIP	204	RIPPLE PIPE
33	FUEL TUBE	205	PLASTIC SLEEVE
34	FUEL COCK	206	PLASTIC SLEEVE
35	FUEL TANK	301	AIR CLEANER ASSEMBLY(58+...63)
36	FUEL FILTER		

SO20130207



БЕНЗОДВИГАТЕЛЬ ДЛЯ ЭГС-8750

No.	DESCRIPTION	No.	DESCRIPTION	No.	DESCRIPTION
1	FLANGE BOLTM6X8	62	DOWEL PIN8X14	102	PUSH ROD GUIDE PLATE
2	RECOIL STARTER CASE COMP	63	RADIAL BALL BEARING 6207/C3	103	PIVOT BOLT
3	STARTER RETURN SPRING	64	CASE COVER PACKING	104	VALVE ROCKET ARM
4	RECOIL STARTER PULLEY	65	OIL LEVEL SWITCH ASSY	105	ROCKER ARM PIVOT
5	RECOIL STARTER KNOB	66	RADIAL BALL BEARING6202/P6	106	PIVOT ADJUSTING NUT
6	RECOIL STARTER ROPE	67	CAMSHAFT COMP	107	SPARK PLUG
7	RATCHET SPRING	68	BALANCE GEAR	108	CARBURETOR INSULATOR PACKING
8	RATCHET GUIDE SPRING	69	KEY	109	CARBURETOR INSULATOR
9	RATCHET STARTER	70	CRANKSHAFT COMP	110	CARBURETOR PACKING
10	RATCHET GUIDE	71	GOVERNOR SLIDER	111	CARBURETOR ASSY
11	RATCHET GUIDE BOLT	72	GOVERNOR SHAFT CLIP	112	AIR CLEANER PACKING
12	FLANGE BOLTM6X12	73	GOVERNOR SHAFT	113	CYLINDER HEAD CASKET
13	FAN CORER COMP	74	GOVERNOR WEIGHT PIN	114	DOWEL PIN
23	OIL FILLER CAP	75	GOVERNOR WEIGHT	115	IGNITION
24	OIL FILLER CAP PACKING	76	GOVERNOR WEIGHT HOLDER	116	BOLT M6X29
25	FLANGE BOLTM8X40	77	WASHER	201	ENRICHMENT SET ASSY
26	OIL SEAL	78	CONNECTING ROD ASSEMBLY	301	STARTER ASSEMBLY(1+2...11)
27	CRANKCASE COVER	79	PISTON PIN		
28	AIR CLEANER PACKING	80	PISTON PIN CLIP		
29	HEAD OVER PACKING	81	PISTON		
30	HEAD COVER COMP	82	OIL SEAL SET COMP		
31	HEAD COVER BOLT COMP		SECOND RING SET		
32	TUBE		FIRST RING SET		
45	GOVERNOR ROD	83	EX. VALVE		
46	THROTTLE RETURN SPRING	84	IN. VALVE		
47	CONTROL ASSY	85	VALVE SPRING WASHER		
48	GOVERNOR ARM	86	VALVE OIL		
49	GOVERNOR ARM BOLT	87	VALVE SPRING		
50	GOVERNOR SPRING	88	IN , VALVE SPRING RETAINER		
51	COVER ARM SHAFT	89	EX , VALVE SPRING RETAINER		
52	WASHER8.2X17X0.8	90	VALVE ROTATOR		
53	PIN CLIP	93	DRAIN PLUG WASHER		
54	SPECIAL NUT	94	DRAIN PLUG BOLT		
55	STARTER PULLEY COMP	95	VALVE LIFTER		
56	COOLING FAN	96	PUSH ROD		
57	FLYWHEEL COMP	97	BOLT		
58	CRANKCASE ASSY	98	BOLT		
59	OIL SEAL	99	HEAD COMP		
60	DIODE COMP	100	SHROUD		
61	WIRE CLIP	101	BOLT		

SO20130207