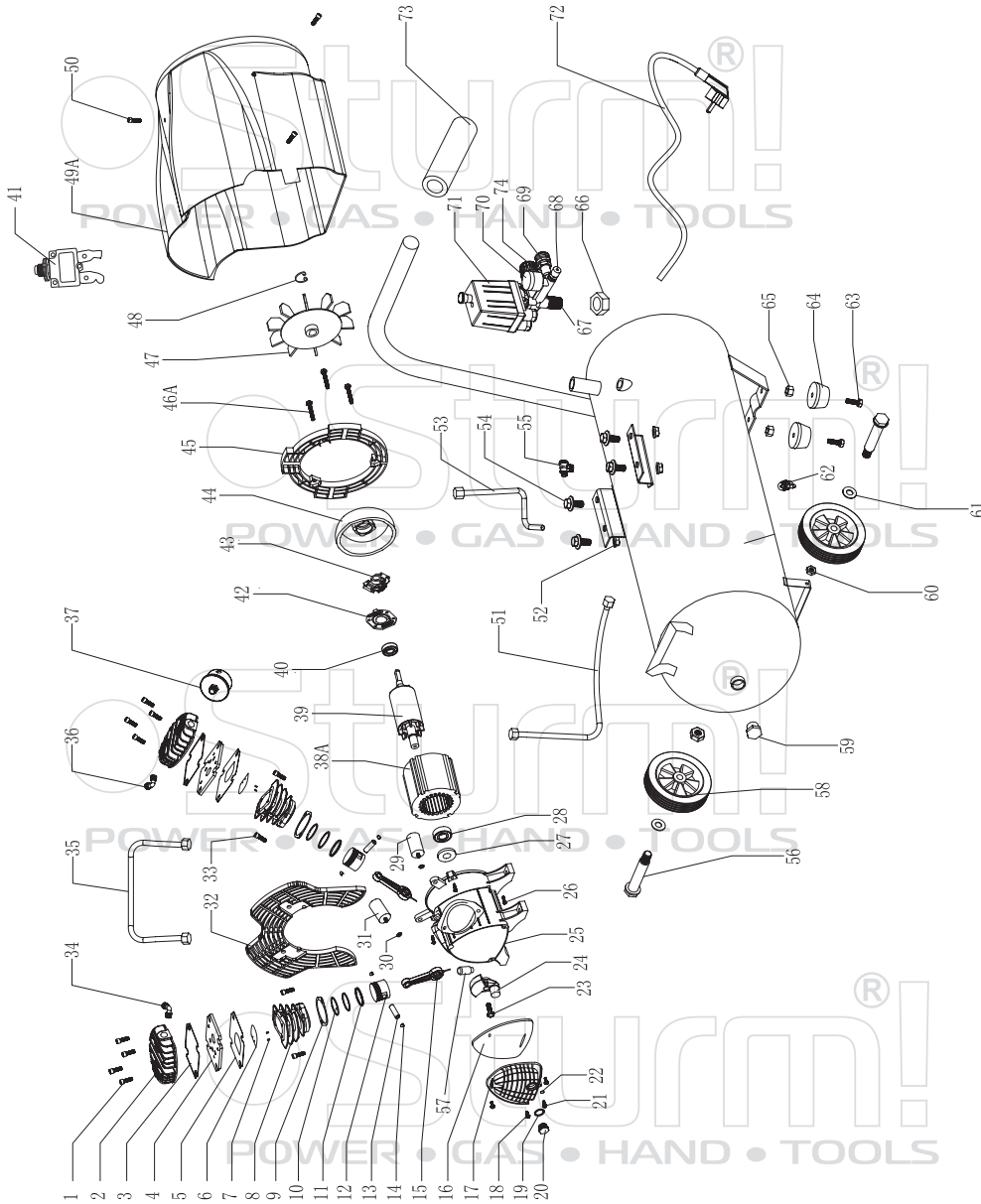


AC93104



NO.	DESCRIPTION	NO.	DESCRIPTION
1	BOLT M6X40	38A	STATOR & HOUSING
2	CYLINDER HEAD	39	ROTOR
3	"O" RING	40	BEARING 6205
4	VALVE PLATE	41	OVER LOAD PROTECTOR
5	VALVE PLATE GASKET	42	SWITCH BASE
6	VALVE CLACK	43	CENTRIFUGAL SWITCH
7	PIN	44	MOTOR COVER
8	CYLINDER	45	PLASTIC BACK SHIELD
9	CYLINDER GASKET	46A	BOLT M6X30
10	PISTON RING	47	FAN
11	OIL WREATH	48	CIRCLIP
12	PISTON	49A	FAN COVER ASSEMBLE
13	PISTON PIN	50	BOLT ST4.8X16
14	CIRCLIP	51	HIGH PRESSURE TUBE
15	CONNECTING ROD	52	NUT M8
16	RUBBER GASKET	53	RELEASE PIPE
17	CRANK CASE COVER	54	BOLT M8X25
18	BOLT	55	ONE-WAY VALVE
19	OIL LEVEL GASKET	56	AXLE
20	OIL LEVEL	57	BREATH PIPE
21	BOLT	58	WHEEL
22	"O" CIRCLIP	59	JAM HEAD
23	HEX BOLT M8X22(LEFT)	60	NUT M10
24	CRANK	61	WASHER
25	CRANK CASE	62	DRAIN COCK
26	BOLT M6X40	63	BOLT M8X25
27	SEALING RING	64	RUBBER FEET
28	BEARING 6205	65	NUT M8
29	START CAPACITOR	66	NUT
30	NUT M8	67	SWITCH SUPPORT
31	OPERATION CAPACITOR	68	SAFE VALVE
32	PLASTIC SHIELD	69	QUICK COUPLERS
33	BOLT M8X25	70	PRESSURE GAUGE
34	RIGHT ANGLE CONNECTOR	71	PRESSURE SWITCH
35	CONNECT PIPE	72	CABLE & PLUG
36	THREE HEAD CONNECTOR	73	RUBBER HANDLE
37	AIR FILTER	74	REGULATE VALVE

ST20101117-1