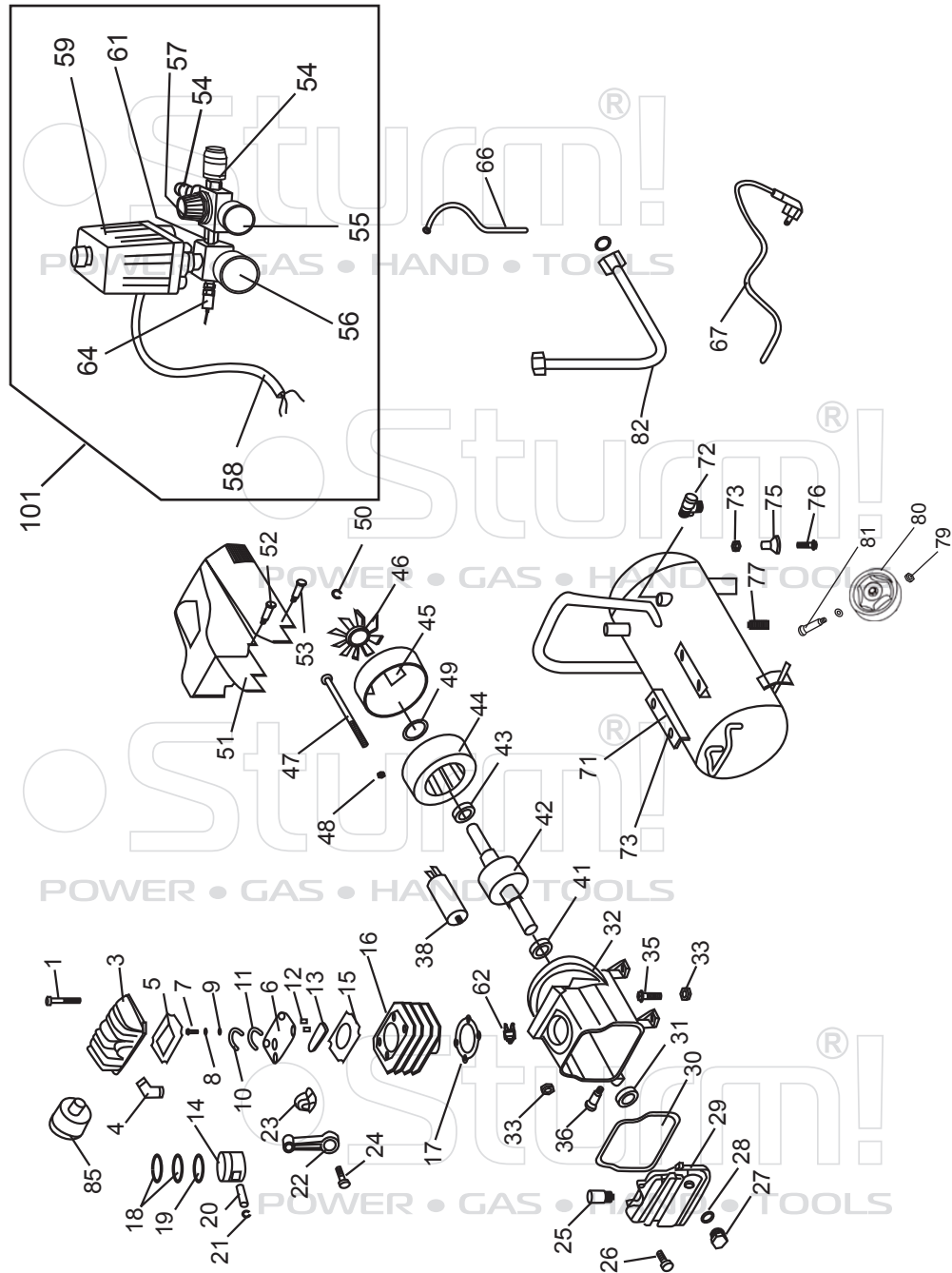


AC93155



NO.	DESCRIPTION	NO.	DESCRIPTION
1	HEX BOLT WITH WASHER	42	ROTOR
3	CYLINDER HEAD	43	BEARING 6202
4	EXHAUST ELBOW	44	STATOR WITH THERMAL PROTECTOR
5	CYLINDER GASKET	45	REAR MOTOR COVER
6	VALVE PLATE	46	FAN
7	SCREW	47	HEX BOLT
8	LOCKWASHER	48	LOCK WASHER
9	FLAT WASHER	49	SPACER
10	VALVE LIMITER	50	EXT RETAINING RING
11	VALVE REED	51	FAN COVER
12	POSITION PIN	52	HEX BOLT
13	INLET VALVE	53	SCREW
14	PISTON	54	QUICK COUPLER
15	CYLINDER GASKET UPPER	55	PRESSURE GAUGE(LITTLE)
16	CYLINDER	56	PRESSURE GAUGE(BIG)
17	CYLINDER GASKET LOWER	57	REGULATOR VALVE
18	COMPRESSION RING	58	INTERNAL WIRE
19	OIL RING	59	PRESSURE SWITCH
20	PISTON PIN	61	CONNECTOR
21	EXT RETAINING RING	62	OVERLOAD PROTECTOR
22	CONNECTING ROD	64	SAFETY VALVE
23	ECCENTRICITY	66	RELIEF TUBE ASSEMBLY
24	SCREW	67	POWER CORD & PLUG
25	BREATH PIPE	71	TANK
26	SCREW	72	CHECK VALVE
27	OIL INDICATOR SIGHT	73	HEX NUT
28	OIL INDICATOR SEAL	75	FOOT
29	CRANKCASE COVER	76	HEX BOLT
30	COVER SEAL	77	DRAIN VALVE
31	OIL SEAL	79	NUT
32	CRANKCASE	80	WHEEL
33	HEX NUT	81	PIN
35	HEX BOLT	82	DISCHARGE PIPE ASSEMBLY
36	OIL PLUG	85	AIR FILTER
38	CAPACITOR	101	PRESSURE SWITCH AND AIR CONNECTOR ASSEMBLY
41	BEARING 6204		

UK-ST20190911