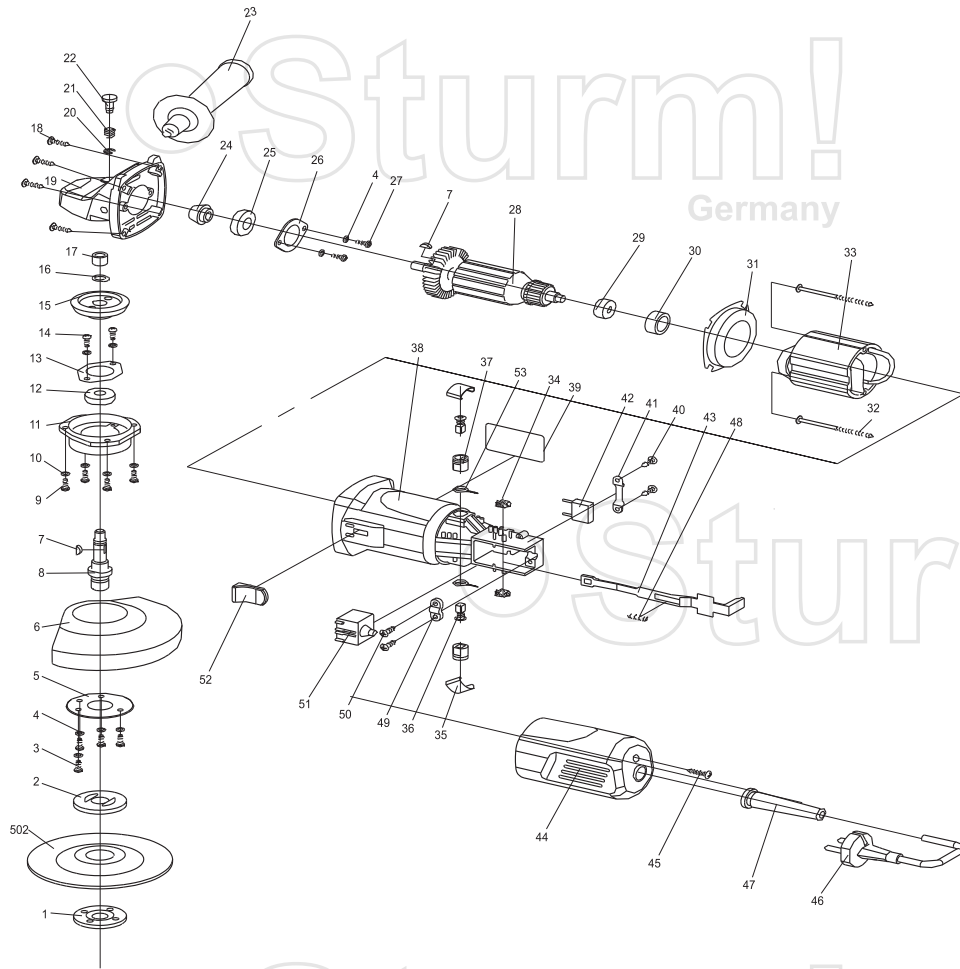


AG9011



NO.	DESCRIPTION	NO.	DESCRIPTION
1	OUTER FLANGE	30	BEARING BUSH
2	INNER FLANGE	31	WIND-DRIVING GUARD
3	SCREW M4X12	32	SCREW M4X50
4	SPRING WASHER	33	STATOR
5	PRESSED PLATE OF GUARD	34	INDUCTOR
6	WHEEL GUARD	35	BRUSH CAP
7	WOODRUFF KEY	36	CARBON BRUSH
8	SPINDLE	37	BRUSH HOLDER
9	SCREW M4X14	38	HOUSING
10	SPRING WASHER	39	TRADE MARK
11	FRONT COVER	40	TAPPING SCREW ST2.9X10
12	BEARING 6000	41	CAPACITOR CLAMP
13	BEARING COVER	42	CAPACITOR
14	SCREW M4X10	43	SWITCH POLE
15	BIG GEAR	44	REAR COVER
16	CIRCLIP	45	TAPPING SCREW ST4.2X16
17	OGALLAY BEARING	46	CORD & PLUG
18	TAPPING SCREW ST4.2X18	47	CORD SLEEVE
19	GEAR BOX	48	SPRING OF SWITCH POLE
20	CIRCLIP	49	CORD ANCHORAGE
21	LOCK SPRING	50	TAPPING SCREW ST4.2X12
22	LOCK PIN	51	SWITCH
23	SIDE HANDLE	52	SWITCH BUTTON
24	PINION GEAR	53	COPPER SPRING
25	BEARING 629	501	SPANNER
26	BEARING COVER	502	GRINDER DISC
27	SCREW M4X10		
28	ROTOR		
29	BEARING 607		

RU60608-1

