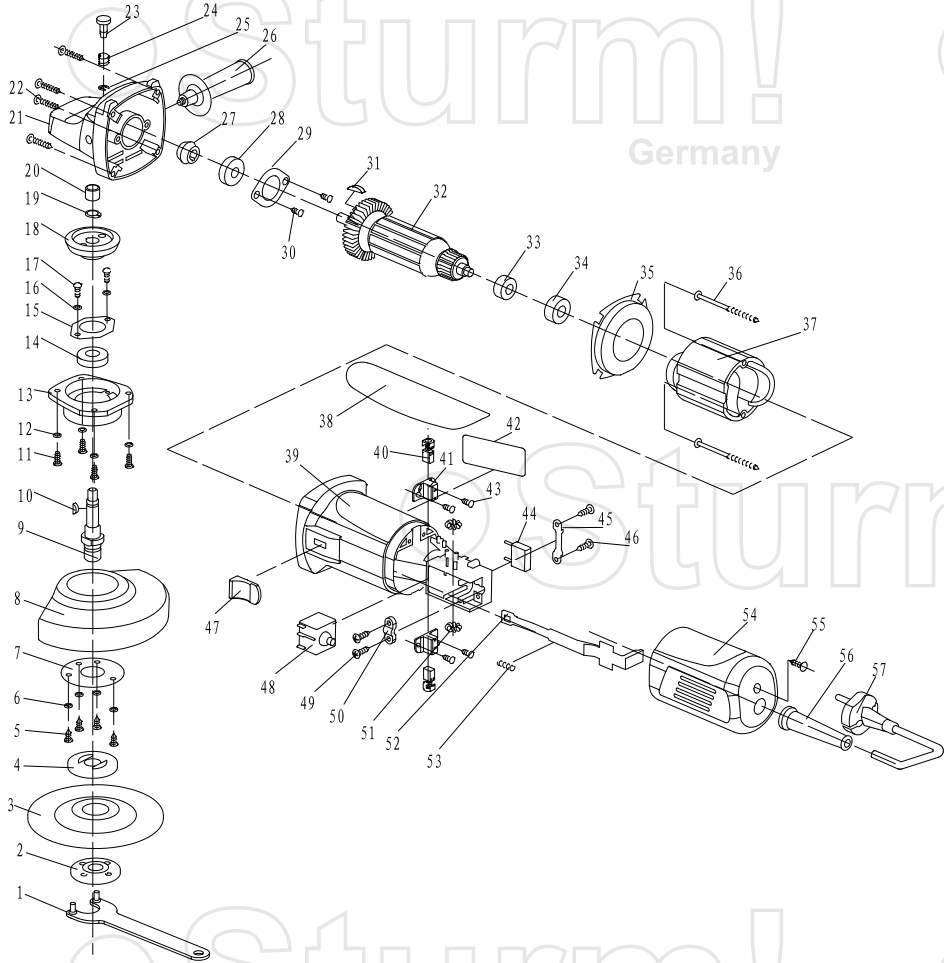


# AG9012H



NO.	DESCRIPTION	NO.	DESCRIPTION
1	SPANNER	30	SCREW M4X10
2	OUTER FLANGE	31	KEY
3	WHEEL	32	ARMATURE
4	INNER FLANGE	33	BEARING 608
5	SCREW M4X12	34	BEARING RUBBER BUSH
6	SPRING WASHER 4	35	WIND GUARD
7	PRESS BOARD FOR GUARD	36	TAPPING SCREW ST4.2X65
8	PROTECT GUARD	37	STATOR ASSEMBLY
9	OUTPUT SPINDLE	38	REAR COVER DECORATE RUBBER
10	KEY	39	ENCLOSURE
11	SCREW M4X14	40	CARBON BRUSH ASSEMBLY
12	SPRING WASHER 4	41	BRUSH RACK
13	FRONT COVER	42	NAMEPLATE
14	BEARING 6000-Z	43	TAPPING SCREW ST2.9X8
15	BEARING COVER	44	CAPACITOR
16	SPRING WASHER 4	45	PRESS BOARD FOR CAPACITOR
17	SCREW M4X10	46	TAPPING SCREW ST2.9X8
18	BIG GEAR	47	PUSH KNOB OF SWITCH
19	CIRCLIP FOR AXIS 10	48	SWITCH
20	BUSH	49	TAPPING SCREW ST4.2X14
21	GEAR BOX	50	ANCHORAGE
22	TAPPING SCREW ST4.2X25	51	INDUCTOR
23	LOCK PIN	52	PULL POLE OF SWITCH
24	LOCK SPRING	53	SPRING OF POLE
25	CIRCLIP	54	REAR COVER
26	SIDE HANDLE	55	TAPPING SCREW ST4.2X14
27	PINION	56	CORD SLEEVE
28	BEARING 629-2Z	57	PLUG
29	BEARING COVER		

RU5120202