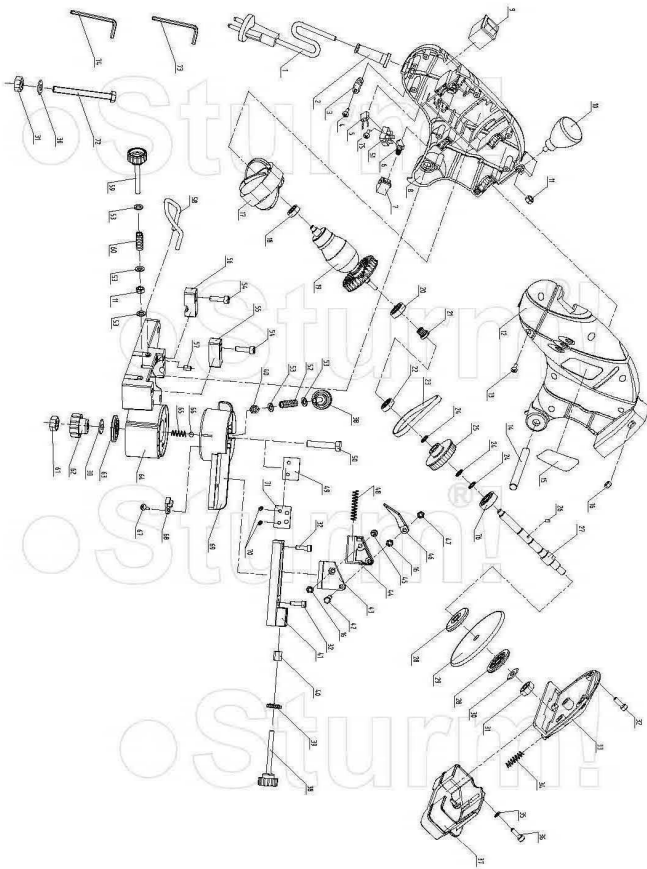


BG60016



NO.	DESCRIPTION	NO.	DESCRIPTION
1	POWER CORD	39	NUT
2	CORD GUARD	40	NUT
3	CORD ANCHORAGE	41	BRACKET
4	SCREW ST4X14	42	BOLT
5	CAPACITOR 0,22UF	43	LEFT SLIP BLOCK
6	CARBON BRUSH	44	RIGHT SLIP BLOCK
7	BRUSH HOLDER	45	BOLT
8	LEFT ENCLOSURE	46	BLOCK
9	SWITCH	47	LOCK NUT
10	HANDLE	48	SPRING
11	HEX NUT	49	PRESS BOARD
12	RIGHT ENCLOSURE	50	BOLT
13	SCREW ST4X16	51	TERMINAL
14	SHAFT	52	SPRING
15	LABEL	53	FLAT WASHER
16	HEX NUT	54	HEX BOLT
17	STATOR ASSEMBLY	55	RIGHT PRESS BOARD
18	BEARING 60ZZ	56	LEFT PRESS BOARD
19	ROTOR ASSEMBLY	57	LOCK BOLT
20	BEARING 60RZ	58	BRACKET
21	SMALL FEED WHEEL	59	ADJUSTMENT BOLT
22	BEARING 60ZZ	60	SPRING
23	DRIVING BELT	61	LOCK NUT
24	CIRCLIP FOR SHAFT	62	LOCK HANDLE
25	BIG FEED WHEEL	63	FIXING BOARD
26	PIN	64	BASE BOARD
27	SHAFT	65	LIMITER SPRING
28	PRESS BOARD	66	STEEL BALL
29	GRINDING DISC	67	BOLT
30	FLAT WASHER	68	BRACKET
31	HEX NUT	69	ROTATABLE CHAIN FIXING DEVICE
32	SCREW	70	PRESS SPRING
33	GUARD COVER	71	LEFT PRESS BOARD ASSEMBLY
34	BACKWARD SPRING	72	BOLT
35	FLAT WASHER	73	HEX SPANNER 4X22X65
36	BOLT	74	HEX SPANNER 5X22X66
37	PROTECTIVE GUARD	75	SCREW
38	ADJUSTMENT BOLT	76	6000 Z

FU090730-1