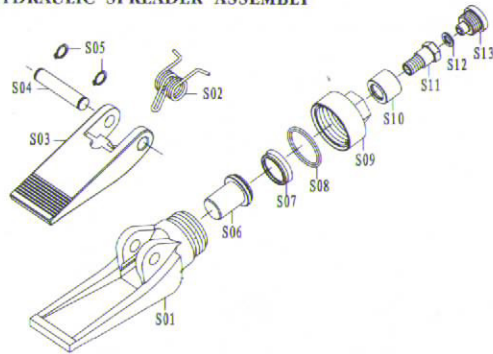


# PARTS LISTING AND DRAWING

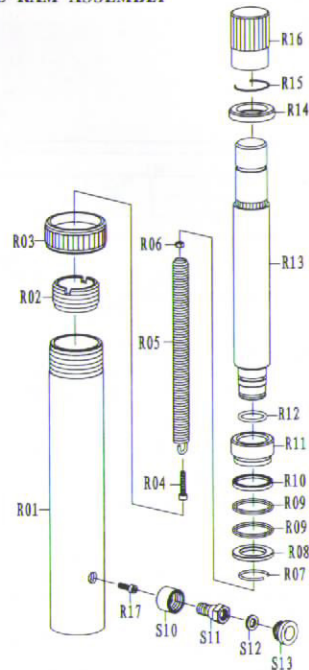
10 TON

HYDRAULIC RAM ASSEMBLY

HYDRAULIC SPREADER ASSEMBLY



| Part No. | Nomenclature    |
|----------|-----------------|
| S01      | Lower duck bill |
| S02      | Spring          |
| S03      | Upper duck bill |
| S04      | Pivot pin       |
| S05      | Cir clip        |
| S06      | Piston          |
| S07      | Cup seal        |
| S08      | O-ring          |
| S09      | End cap         |
| S10      | Coupling ring   |
| S11      | Coupling bolt   |
| S12      | O-ring          |
| S13      | Dust cap        |

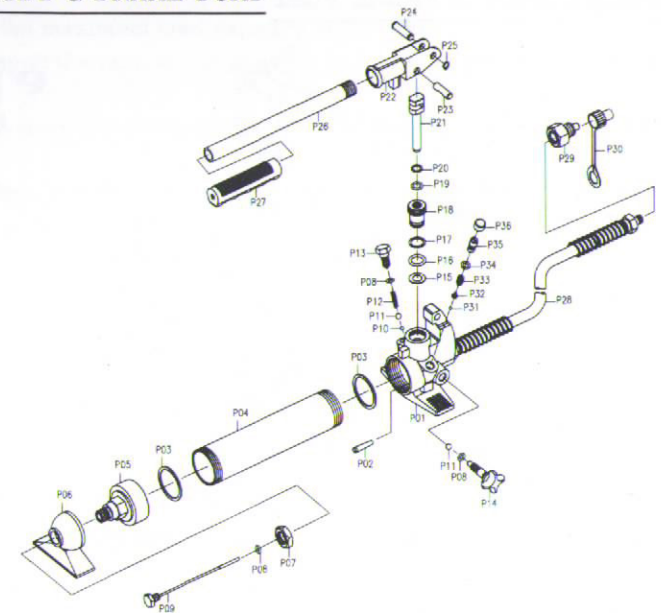


| Part No. | Nomenclature   |
|----------|----------------|
| R01      | Cylinder       |
| R02      | Retainer nut   |
| R03      | Protecting cap |
| R04      | Screw          |
| R05      | Spring         |
| R06      | Hex nut        |
| R07      | Cir clip       |
| R08      | Washer         |
| R09      | O-ring         |
| R10      | Cup            |
| R11      | Piston ring    |
| R12      | O-ring         |
| R13      | Ram            |
| R14      | Spacing ring   |
| R15      | Cir clip       |
| R16      | protecting cap |
| R17      | Screw          |

# SPARE PARTS LISTING

10 TON

HYDRAULIC BODY & FRAME PUMP



| Part No. | Nomenclature      |
|----------|-------------------|
| P01      | Pump housing      |
| P02      | Filler            |
| P03      | Seal              |
| P04      | Reservoir end cap |
| P05      | Reservoir end cap |
| P06      | Pump foot         |
| P07      | Hex net           |
| P08      | O-ring            |
| P09      | Dip stick         |
| P10      | Ball valve        |
| P11      | Spring            |
| P12      | Overload screw    |
| P13      | Ram               |
| P14      | Relise valve stem |
| P15      | Seal              |
| P16      | O-ring            |
| P17      | Back up ring      |
| P18      | Clamping nut      |

| Part No. | Nomenclature        |
|----------|---------------------|
| P19      | O-ring              |
| P20      | Back up ring        |
| P21      | Piston              |
| P22      | Handle bracket      |
| P23      | Piston pin          |
| P24      | Bracket pin         |
| P25      | Cir clip            |
| P26      | Pump handle         |
| P27      | Handle grip         |
| P28      | Hose                |
| P29      | Coupling            |
| P30      | Dust cap            |
| P31      | Ball valve          |
| P32      | Spring plunger      |
| P33      | Spring              |
| P34      | O-ring              |
| P35      | Screw(Safety valve) |
| P36      | Plastic cap         |