

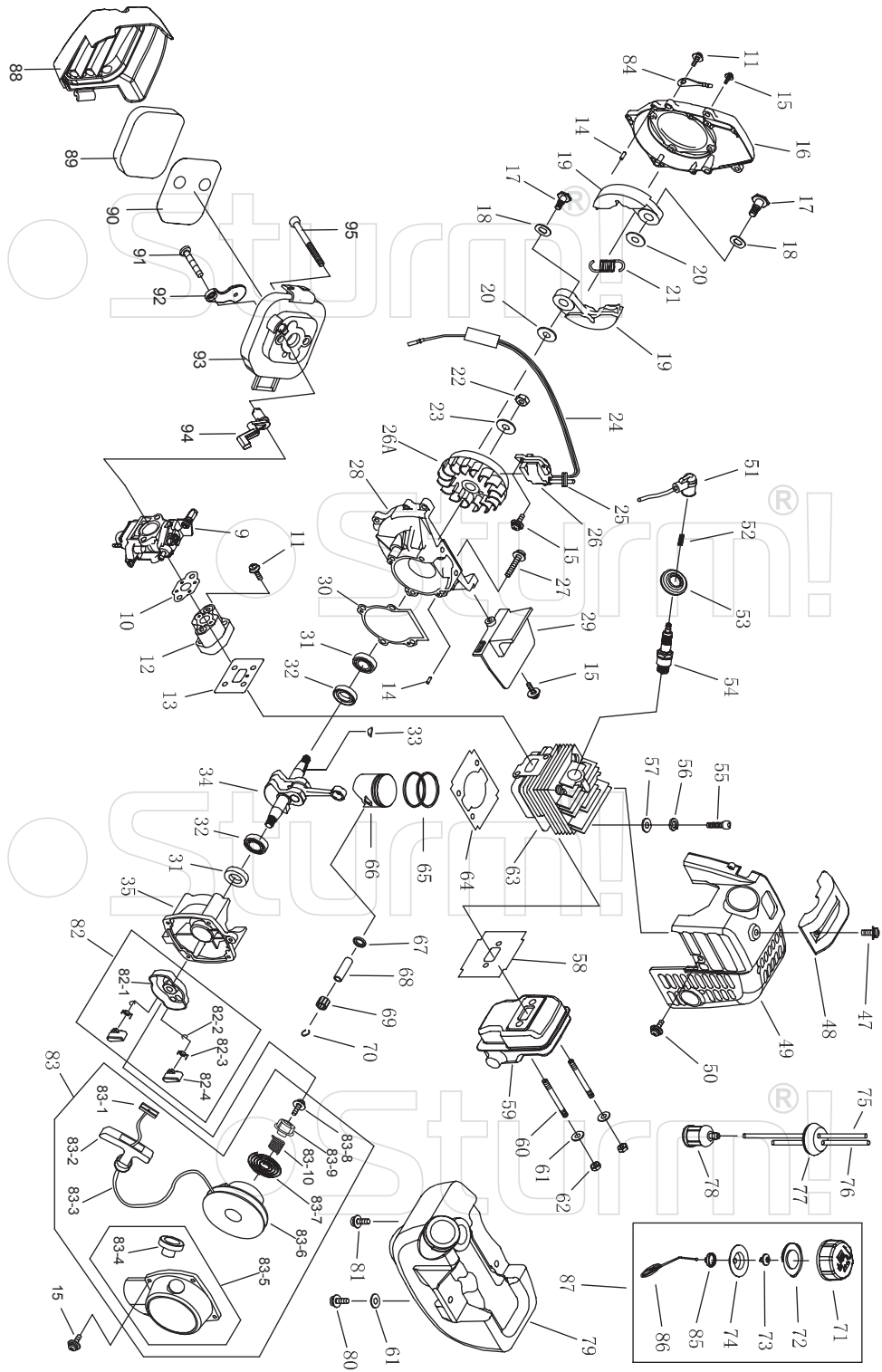
BT8926S

NO.	DESCRIPTION	NO.	DESCRIPTION	NO.	DESCRIPTION
2	STOP RING	35	CLUTCH CASE	68	BLADE COVER
3	STOP RING	36	CIRCLIP 15	69	GUARD ASSEMBLY
4	BEARING 6000-2RS/P5	37	BEARING 6202-2RZ	70	SCREW
5	PINION	38	CIRCLIP 35	71	SCREW
6	STEEL PLATE CAP	39	CLUTCH DRUM COMP.	72	SAFETY GUARD BRACKET
7	SCREW M6X20	40	SCREW	73	SCREW
8	WASHER	41	BUTTON	74	SAFETY GUARD
9	SCREW M5X12	42	SPRING	75	LOW GUARD ASSEMBLY
10	BOLT M6X12	43	LOCKING PIN	76	LOW GUARD
11	WASHER	44	TRIGGER	77	SCREW
12	GEAR CASE	45	SPRING	78	BLADE
13	BLADE COVER	46	NUT	79	ROPE ROOM CAP
14	BEARING 6000/P5	47	LEFT HANDLE	80	BOUNCE OBJECT
15	GEAR	48	SPRING	81	ROPE CAP
16	GEAR SHAFT	49	HAND GRIP	82	ROPE SEAT
17	BEARING 6002-2RS/P5	50	STOP BUTTOM COMP.	83	NYLON CORD
18	STOP RING	51	TUBE	84	SPRING
19	HOLDER	52	CABLE COMP.	85	ROPE ROOM
20	HOLDER	53	RIGHT HANDLE	86	BOLT
21	WASHER	54	SCREW	87	SPRING
22	LEFT NUT	55	SCREW	88	RING FOR LIMIT
23	PIN	56	NUT	89	WASHER
24	3T BLADE	57	HARNESS CLAMP	90	HANDLE GRIP
25	PIPE COMP	58	CLAMP	91	NUT
26	RUBBER COVER	59	SCREW	100	GEAR BOX ASSEMBLY
27	OIL-BEARING	60	LEFT HANDLE	101	PIPE ASSEMBLY
28	DRIVE SHAFT	61	BOLT	102	CLUCH ASSEMBLY
29	PIPE	62	UPPER CAP	103	LEVER ASSEMBLY
30	CIRCLIP	63	LEFT GRIP	104	HOLDER ASSEMBLY
31	HANG RING	64	RIGHT HANDLE	105	GUARD ASSEMBLY
32	HANG HANDLE	65	BRACKET	106	NYLON CUTTER HEAD
33	BOLT	66	LOWER CAP	107	RING FOR LIMIT ASSEMBLY
34	NUT	67	SCREW		

UK-ST20181010

Sturm!

ENGINE FOR BT8926S



NO.	DESCRIPTION	NO.	DESCRIPTION	NO.	DESCRIPTION
9	CARBURETOR	50	SCREW M4X12	81	SCREW M5X16
10	GASKET	51	PLUG CAP	82	STARTER PULLEY ASS'Y
11	SCREW M5X20	52	CLICK SPRING	82-1	STARTER REEL
12	INLET MANIFOLD	53	PLUG COVER	82-2	STOP RING
13	CYLINDER WASHER	54	SPARK PLUG	82-3	STARTER PAWL SPRING
14	PIN	55	SCREW M5X20	82-4	STARTER PAWL
15	SCREW M4X16	56	WASHER	83	STARTER
16	FAN COVER	57	WASHER	83-1	GASKET
17	CLUTCH STEP SCREW	58	GASKET	83-2	STARTER HANDLE
18	WASHER	59	MUFFLER COMP	83-3	ROPE
19	CLUTCH SHOE COMP	60	BOLT	83-4	ROPE GUIDE
20	WASHER	61	WASHER	83-5	RECOIL STARTER BODY
21	CLUTCH SPRING	62	NUT M5	83-6	STARTER ROPE REEL
22	NUT M8X1	63	CYLINDER	83-7	RECOIL SPRING
23	WASHER	64	CYLINDER WASHER	83-8	SCREW
24	STOP CORD COMP	65	PISTON RING	83-9	START RATCHET
25	PRIMARY CORD GROMMET	66	PISTON	83-10	EASY START COIL-SPRING
26	MAGNETO STATOR	67	STOP RING	84	FLASH PAN
26A	MAGNETO ROTOR	68	PISTON PIN	85	LID
27	SCREW M5X25	69	NEEDLE BEARING	86	CHAIN
28	FRONT HALF CRANK CASE	70	PISTON PIN CIRCLET	87	FUEL TANK LID COMP
29	GUIDE PLATE	71	FUEL TANK LID	88	CLEANER OUTSIDE COVER
30	CRANK CASE GASKET	72	GASKET	89	CLEANER ELEMENT
31	OIL SEAL	73	AIRINLET MOUTH	90	DEFENDER FOR CLEANER ELEMENT
32	BALL BEARING 6001/P5	74	INSIDE COVER	91	SCREW ST4.2X12-F-H
33	KEY	75	OUTLET FUEL PIPE	92	CHOKE
34	CRANK SHAFT COMP	76	INLET FUEL PIPE	93	CLEANER INSIDE COVER
35	REAR HALF CRANK CASE	77	PRIMARY CORD GROMMET	94	CHOKE HANDLE
47	SCREW M5X14	78	CLEANER	95	SCREW M5X55
48	COVER	79	FUEL TANK		
49	ENGINE COVER	80	SCREW M5X16		

UK-ST20181010

Sturm!