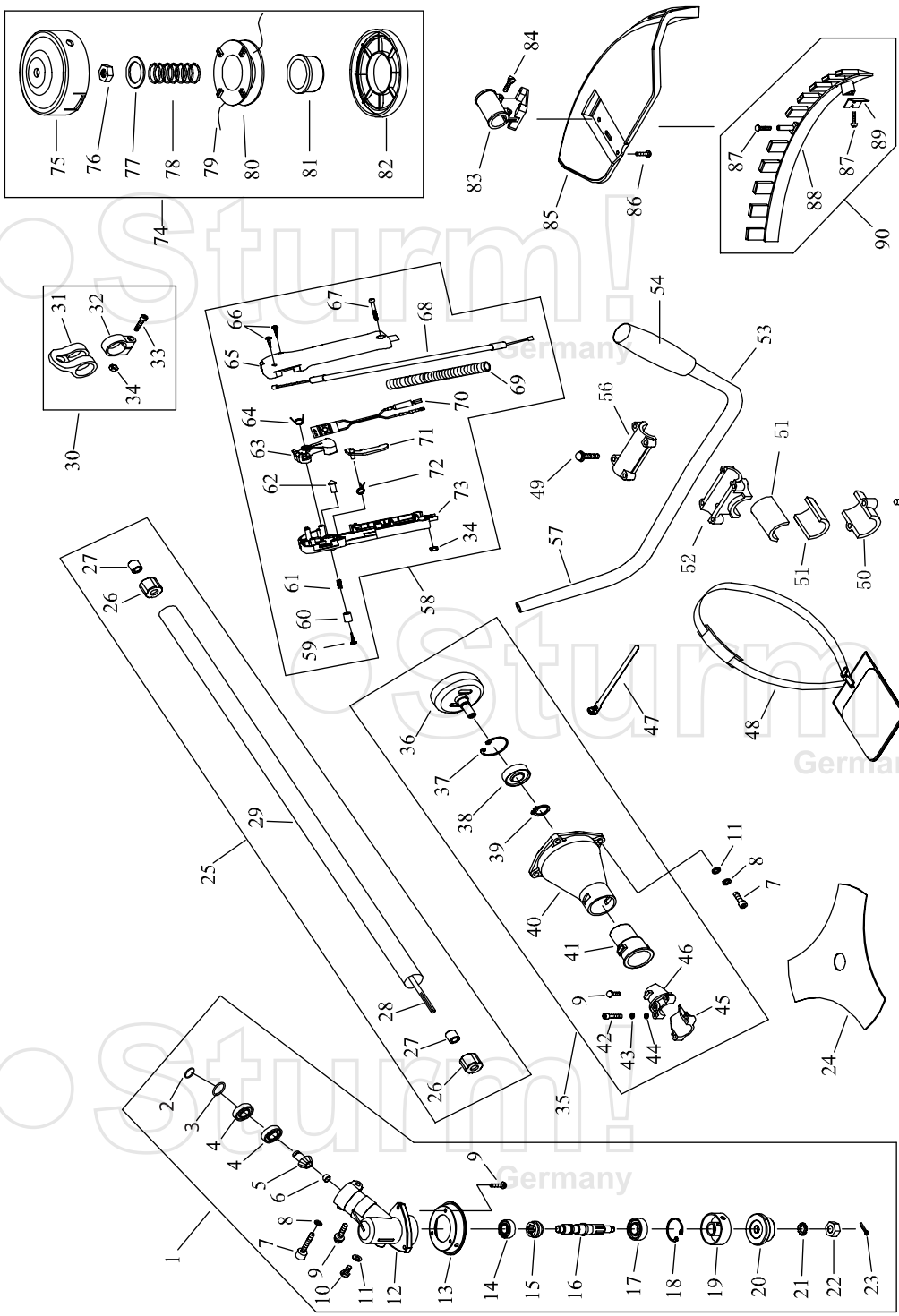


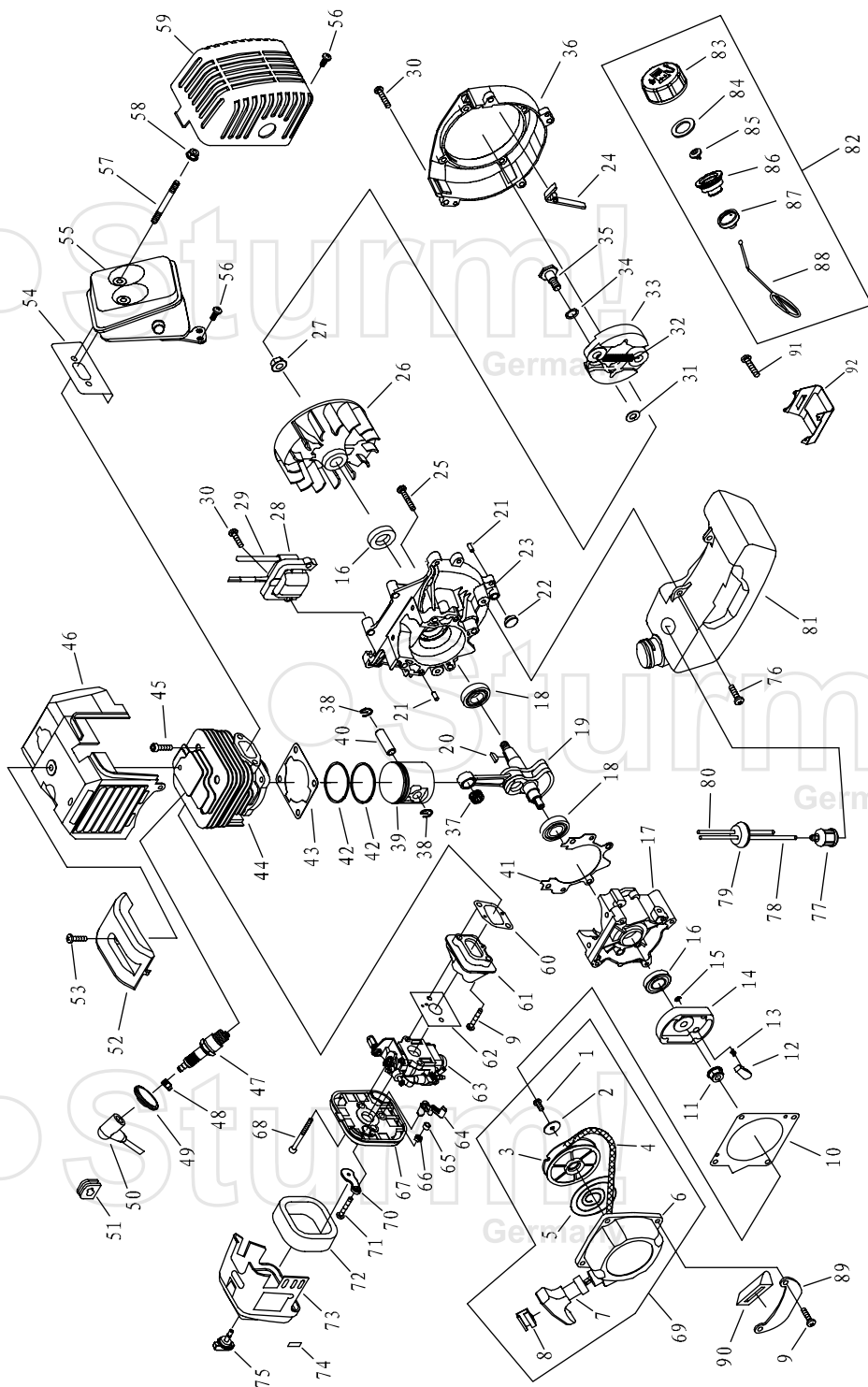
# BT8933D



NO.	DESCRIPTION	NO.	DESCRIPTION	NO.	DESCRIPTION
1	GEAR CASE ASS'Y	31	HARNASS CLAMP	62	CLOCK PIN
2	STOP RING	32	CLAMP	63	HANDGRIP
3	STOP RING	33	SCREW M5X20	64	SPRING
4	BEARING 6000-2RS/P5	34	NUT	65	BOX,RIGHT
5	PINION	35	CLUTCH COMP	66	SCREW ST2.9X18
6	STEEL PLATE CAP	36	CLUTCH DRUM COMP	67	SCREW M5X30
7	SCREW M6X20	37	STOP RING	68	CABLE COMP
8	WASHER	38	BEARING 6202-2RS/P5	69	TUBE
9	SCREW M5X12	39	STOP RING	70	STOP BUTTON COMP
10	BOLT M6X12	40	LINKER	71	HANDGRIP
11	WASHER	41	RUBBER COVER	72	SPRING
12	GEAR CASE	42	SCREW	73	BOX,LEFT
13	BLADE COVER	43	WASHER	74	NYLON CUTTER HEAD
14	BEARING 6000/P5	44	WASHER	75	CASE
15	GEAR	45	CLAMP B	76	LEFT NUT
16	GEAR SHAFT	46	CLAMP A	77	WASHER
17	BEARING 6002-2RS/P5	47	WIRE CLAMP BAND	78	SPRING
18	STOP RING	48	HARNASS ASS'Y	79	NYLON CORD
19	HOLDER	49	SCREW M5X2	80	CORD HOLDER
20	HOLDER	50	CAP,LOWER	81	PLATEN
21	WASHER	51	RUBBER WASHER	82	COVER
22	LEFT NUT	52	BRACKET	83	BRACKET
23	PIN	53	HANDLE	84	SCREW M5X30
24	BLADE	54	GRIP LEFT	85	SAFETY GUARD
25	PIPE COMP	56	CAP,UPPER	86	SCREW M5X16
26	RUBBER COVER	57	HANDLE	87	SCREW ST4.2X16
27	OIL-BEARING	58	LEVER ASS'Y	88	GUARD
28	DRIVE SHAFT	59	SCREW ST2.9X13	89	BLADE
29	PIPE	60	BUTTON	90	GUARD ASS'Y
30	HOLDER ASSY	61	SPRING		

RU61231-2

Sturm!  
Germany



## ENGINE FOR BT8933D

NO.	DESCRIPTION	NO.	DESCRIPTION	NO.	DESCRIPTION
1	SCREW	32	SPRING	63	CARBURETOR
2	WASHER	33	EXPANDER	64	CHOKER HANDLE
3	START ROPE REEL	34	WASHER	65	STOP RING
4	ROPE	35	SCREW PIN	66	NUT
5	RECOIL SPRING	36	FAN COVER	67	CLEAR INSIDE COVER
6	START COVER ASS'Y	37	BEARING	68	SCREW M5X50
7	START HANDLE	38	RING	69	STARTER
8	RING	39	PISTON	70	CHOKER
9	SCREW MSX20	40	PISTON PIN	71	SCREW ST4.2X12
10	GASKET	41	GASKET	72	FILTER
11	NUT	42	PISTON RING	73	CLEANER OUTSIDE COVER
12	START CLAW	43	GASKET	74	LABEL
13	START SPRING	44	CYLINDER	75	SCREW
14	START REEL	45	SCREW	76	SCREW M5X16
15	STOP RING	46	GUIDE COVER ASS'Y	77	CLEANER COVER
16	OIL-SEAL	47	SPARK PLUG	78	OUTLET FUEL PIPE
17	CRANK CASE	48	SPRING	79	PLUG
18	BEARING 6201/P5	49	PLUG COVER	80	INLET FUEL PIPE
19	CRANK SHAFT	50	PLUG CAP	81	FUEL TANK
20	KEY	51	PLUG	82	LID ASS'Y
21	PIN	52	UPPER COVER	83	FUEL TANK LID
22	RUBBER WASHER	53	SCREW	84	GASKET
23	CRANK CASE	54	GASKET	85	INLET
24	FLASH PAN	55	MUFFLER	86	INSIDE LID
25	SCREW M5X30	56	SCREW	87	INSIDE LID
26	MAGNETO ROTO COMP.	57	BOLT	88	CHAIN
27	NUT	58	NUT	89	STAND
28	IGNITION COLL COMP.	59	MUFFLER COVER	90	RUBBER COVER
29	CORD COMP.	60	GASKET	91	SCREW M5X20
30	BOLT M5X20	61	ADMITTING PIPE	92	BRACKET
31	WASHER B	62	GASKET		

RU61227-1