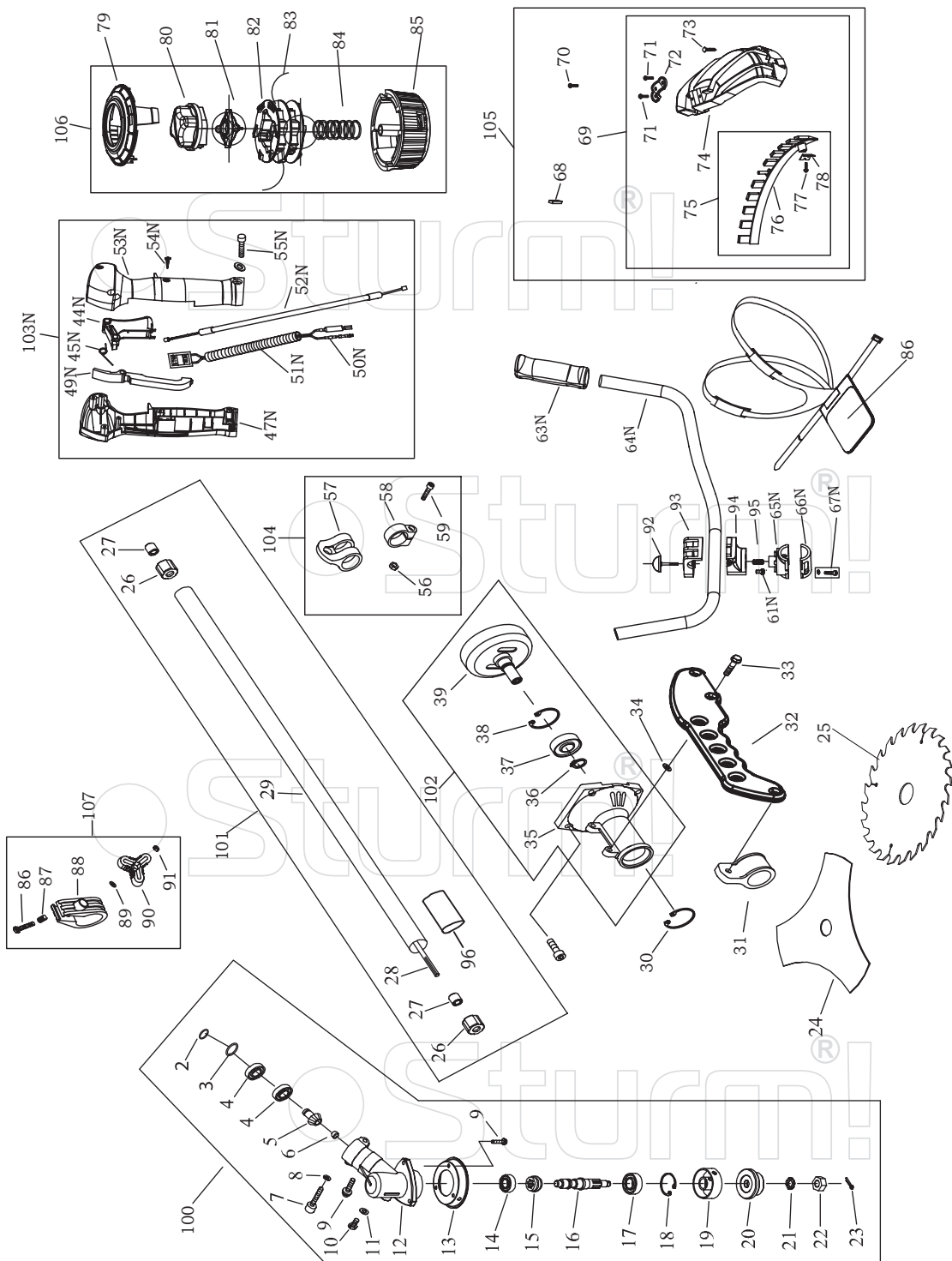


ENGINE FOR BT8933S

| NO. | DESCRIPTION | NO. | DESCRIPTION | NO. | DESCRIPTION |
|-----|--------------------|-------|------------------------|------|------------------------------|
| 9 | SCREW M5X20 | 44 | CYLINDER | 76 | SCREW M5X16 |
| 10 | GASKET | 45 | SCREW | 77 | CLEANER COVER |
| 11 | NUT | 46 | GUIDE COVER ASS'Y | 78 | OUTLET FUEL PIPE |
| 16 | OIL-SEAL | 47 | SPARK PLUG | 79 | PLUG |
| 17 | CRANK CASE | 48 | SPRING | 80 | INLET FUEL PIPE |
| 18 | BEARING 6201/P5 | 49 | PLUG COVER | 81 | FUEL TANK |
| 19 | CRANK SHAFT | 50 | PLUG CAP | 82 | LID ASS'Y |
| 20 | KEY | 51 | PLUG | 82-1 | FUEL TANK LID |
| 21 | PIN | 52 | UPPER COVER | 82-2 | GASKET |
| 22 | RUBBER WASHER | 53 | SCREW | 82-3 | INLET |
| 23 | CRANK CASE | 54 | GASKET | 82-4 | INSIDE COVER |
| 24 | FLASH PAN | 55 | MUFFLER | 82-5 | LID |
| 25 | SCREW M5X30 | 56 | SCREW | 82-6 | CHAIN |
| 26 | MAGNETO ROTO COMP | 57 | BOLT | 89 | STAND |
| 27 | NUT | 58 | NUT | 90 | RUBBER COVER |
| 28 | IGNITION COLL COMP | 59 | MUFFLER COVER | 91 | SCREW M5X20 |
| 29 | CORD COMP | 60 | GASKET | 92 | BRACKET |
| 30 | BOLT M5X20 | 61 | ADMITTING PIPE | 93 | STARTER PULLEY ASS'Y |
| 31 | WASHER B | 62 | GASKET | 93-1 | STARTER REEL |
| 32 | SPRING | 63 | CARBURETOR | 93-2 | STOP RING |
| 33 | EXPANDER | 69 | STARTER | 93-3 | STARTER PAWL SPRING |
| 34 | WASHER | 69-1 | SCREW | 93-4 | STARTER PAWL |
| 35 | SCREW PIN | 69-2 | WASHER | 94 | CLEANER OUTSIDE COVER |
| 36 | FAN COVER | 69-3 | START ROPE REEL | 95 | CLEANER ELEMENT |
| 37 | BEARING | 69-4 | ROPE | 96 | DEFENDER FOR CLEANER ELEMENT |
| 38 | RING | 69-5 | RECOIL SPRING | 97 | SCREW ST4.2X12-F-H |
| 39 | PISTON | 69-6 | START COVER ASS'Y | 98 | CHOKE |
| 40 | PISTON PIN | 69-7 | START HANDLE | 99 | CLEANER INSIDE COVER |
| 41 | GASKET | 69-8 | RING | 100 | CHOKE HANDLE |
| 42 | PISTON RING | 69-9 | START RATCHET | 101 | SCREW M5X55 |
| 43 | GASKET | 69-10 | EASY START COIL-SPRING | | |

UK-ST20161215

Sturm!



BT8933S

| NO. | DESCRIPTION | NO. | DESCRIPTION | NO. | DESCRIPTION |
|-----|---------------------|-----|----------------------|------|-------------------------|
| 2 | STOP RING | 35 | CLUTCH CASE | 76 | LOW GUARD |
| 3 | STOP RING | 36 | CIRCLIP 15 | 77 | SCREW |
| 4 | BEARING 6000-2RS/P5 | 37 | BEARING 6202-2RZ | 78 | BLADE |
| 5 | PINION | 38 | CIRCLIP 35 | 79 | ROPE ROOM CAP |
| 6 | STEEL PLATE CAP | 39 | CLUTCH DRUM COMP. | 80 | BOUNCE OBJECT |
| 7 | SCREW M6X20 | 44N | TRIGGER | 81 | ROPE CAP |
| 8 | WASHER | 45N | SPRING | 82 | ROPE SEAT |
| 9 | SCREW M5X12 | 47N | LEFT HANDLE | 83 | NYLON CORD |
| 10 | BOLT M6X12 | 49N | HAND GRIP | 84 | SPRING |
| 11 | WASHER | 50N | STOP BUTTOM COMP. | 85 | ROPE ROOM |
| 12 | GEAR CASE | 51N | TUBE | 86 | BOLT |
| 13 | BLADE COVER | 52N | CABLE COMP. | 87 | SPRING |
| 14 | BEARING 6000/P5 | 53N | RIGHT HANDLE | 88 | RING FOR LIMIT |
| 15 | GEAR | 54N | SCREW | 89 | WASHER |
| 16 | GEAR SHAFT | 55N | SCREW | 90 | HANDLE GRIP |
| 17 | BEARING 6002-2RS/P5 | 56 | NUT | 91 | NUT |
| 18 | STOP RING | 57 | HARNES CLAMP | 92 | LOCK BOLT |
| 19 | HOLDER | 58 | CLAMP | 93 | UPPER CAP |
| 20 | HOLDER | 59 | SCREW | 94 | BRACKET |
| 21 | WASHER | 61N | BOLT | 95 | SPRING |
| 22 | LEFT NUT | 63N | LEFT GRIP | 96 | PLASTIC SLEEVE |
| 23 | PIN | 64N | HANDLE | 100 | GEAR BOX ASSEMBLY |
| 24 | 3T BLADE | 65N | BRACKET | 101 | PIPE ASSEMBLY |
| 25 | 40T BLADE | 66N | LOWER CAP | 102 | CLUCH ASSEMBLY |
| 26 | RUBBER COVER | 67N | SCREW | 103N | LEVER ASSEMBLY |
| 27 | OIL-BEARING | 68 | BLADE COVER | 104 | HOLDER ASSEMBLY |
| 28 | DRIVE SHAFT | 69 | GUARD ASSEMBLY | 105 | GUARD ASSEMBLY |
| 29 | PIPE | 70 | SCREW | 106 | NYLON CUTTER HEAD |
| 30 | CIRCLIP | 71 | SCREW | 107 | RING FOR LIMIT ASSEMBLY |
| 31 | HANG RING | 72 | SAFETY GUARD BRACKET | | |
| 32 | HANG HANDLE | 73 | SCREW | | |
| 33 | BOLT | 74 | SAFETY GUARD | | |
| 34 | NUT | 75 | LOW GUARD ASSEMBLY | | |

UK-ST20230628

Sturm!