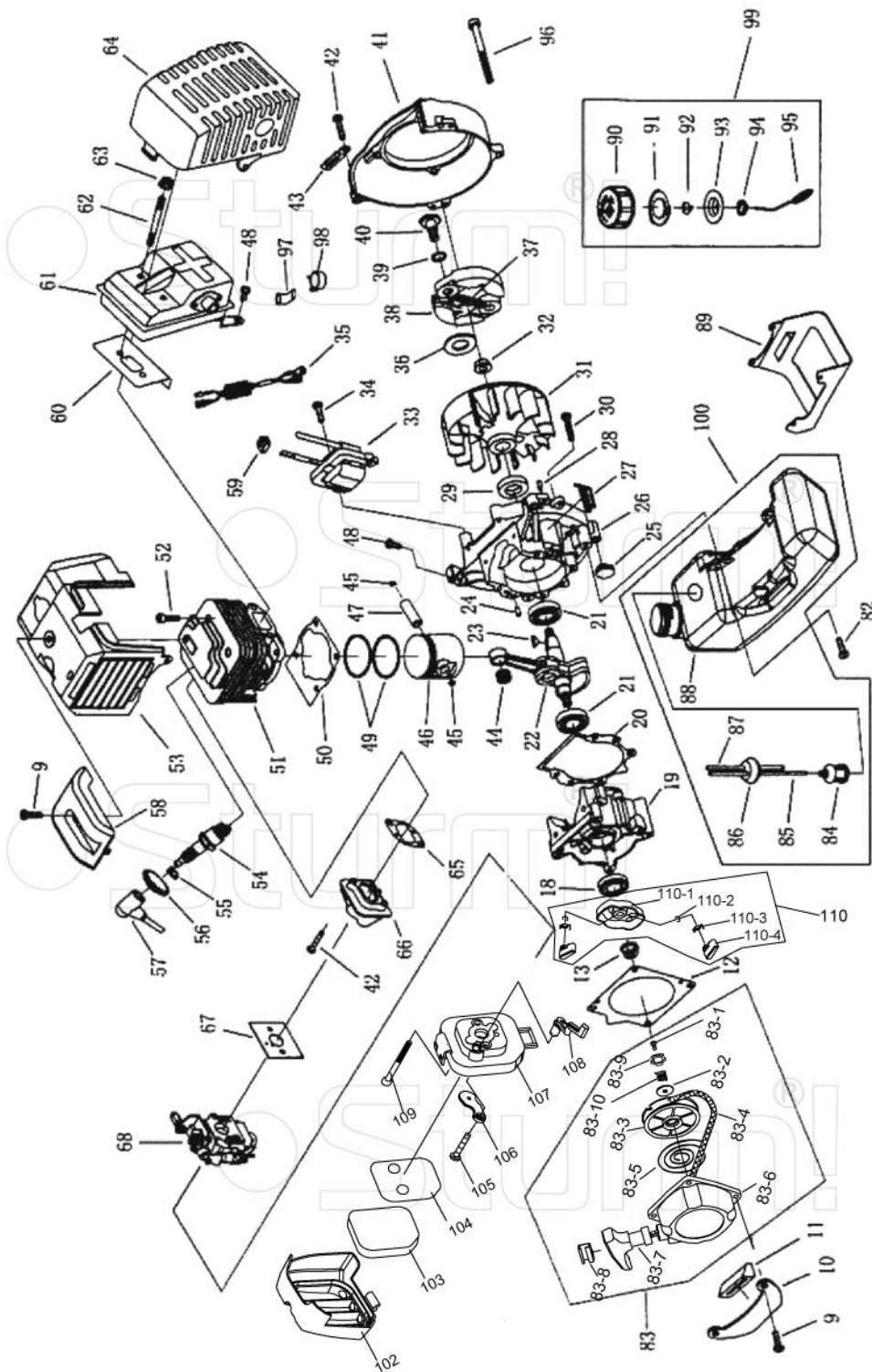


BT8942D

NO.	DESCRIPTION	NO.	DESCRIPTION	NO.	DESCRIPTION
1	GEAR CASE ASS'Y	31	HARNESS CLAMP	61	SPRING
2	STOP RING	32	CLAMP	62	CLOCK PIN
3	STOP RING	33	SCREW M5X20	63	HANDGRIP
4	BEARING 6000-2RS/P5	34	NUT	64	SPRING
5	PINION	35	CLUTCH COMP.	65	BOX,RIGHT
6	STEEL PLATE CAP	36	CLUTCH DRUM COMP.	66	SCREW ST2.9X18
7	SCREW M6X20	37	STOP RING	67	SCREW M5X30
8	WASHER	38	BEARING 6202-2RS/P5	68	CABLE COMP.
9	SCREW M5X12	39	STOP RING	69	TUBE
10	BOLT M6X12	40	LINKER	70	STOP BUTTON COMP.
11	WASHER	41	RUBBER COVER	71	HANDGRIP
12	GEAR CASE	42	SCREW	72	SPRING
13	BLADE COVER	43	WASHER	73	BOX,LEFT
14	BEARING 6000/P5	44	WASHER	74	NYLON CUTTER HEAD
15	GEAR	45	CLAMP B	75	CASE
16	GEAR SHAFT	46	CLAMP A	76	LEFT NUT
17	BEARING 6002-2RS/P5	47	WIRE CLAMP BAND	77	WASHER
18	STOP RING	48	HARNESS ASS'Y	78	SPRING
19	HOLDER	49	SCREW M5X2	79	NYLON CORD
20	HOLDER	50	CAP,LOWER	80	CORD HOLDER
21	WASHER	51	RUBBER WASHER	81	PLATEN
22	LEFT NUT	52	BRACKET	82	COVER
23	PIN	53	HANDLE	83	BRACKET
24	BLADE	54	GRIP LEFT	84	SCREW M5X30
25	PIPE COMP.	55	CAP,UPPER	85	SAFETY GUARD
26	RUBBER COVER	56	BOLT	86	SCREW M5X16
27	OIL-BEARING	57	HANDLE	87	SCREW ST4.2X16
28	DRIVE SHAFT	58	LEVER ASS'Y	88	GUARD
29	PIPE	59	SCREW ST2.9X13	89	BLADE
30	HOLDER ASS'Y	60	BUTTON	90	GUARD ASS'Y

ST20121030-02

Sturm!



ENGINE FOR BT8942D

NO.	DESCRIPTION	NO.	DESCRIPTION	NO.	DESCRIPTION
9	SCREW	46	PISTON	83-10	EASY START COIL-SPRING
10	STAND	47	PISTON PIN	84	CLEANER COVER
11	RUBBER COVER	48	BOLT	85	FUEL PIPE
12	GASKET	49	PISTON RING	86	PLUG
13	NUT	50	GASKET	87	FUEL PIPE
18	SEAL	51	CYLINDER	88	FUEL TANK
19	CRANK CASE	52	SCREW	89	STAND
20	GASKET	53	GUIDE COVER ASS'Y	90	FUEL TANK LID
21	BEARING 6202/P5	54	SPARK PLUG	91	GASKET
22	CRANK SHAFT	55	SPRING	92	INLET
23	KEY	56	PLUG CAP	93	INSIDE COVER
24	PIN	57	CAP	94	INSIDE COVER
25	RUBBER WASHER	58	COVER	95	CHAIN
26	CRANK CASE	59	PLUG	96	SCREW
27	GUIDE COVER	60	GASKET	97	OUTLET
28	PIN	61	MUFFLER	98	STOP RING
29	SEAL	62	BOLT	99	FUEL TANK LID COMP
30	SCREW	63	NUT	100	FUEL TANK COMP
31	FLY WHEEL	64	MUFFLER COVER	102	CLEANER OUTSIDE COVER
32	NUT	65	GASKET	103	CLEANER ELEMENT
33	COIL	66	ADMITTING PIPE	104	DEFENDER FOR CLEANER ELEMENT
34	BOLT	67	GASKET	105	SCREW ST4.2X12-F-H
35	CORD COMP	68	CARBURETOR	106	CHOKE
36	WASHER B	83	STARTER	107	CLEANER INSIDE COVER
37	SPRING	83-1	SCREW	108	CHOKE HANDLE
38	EXPANDER	83-2	WASHER	109	SCREW MSX55
39	WASHER	83-3	START ROPE REEL	110	STARTER PULLEY ASS'Y
40	SCREW PIN	83-4	ROPE	110-1	STARTER REEL
41	FAN COVER	83-5	RECOIL SPRING	110-2	STOP RING
42	BOLT	83-6	START COVER ASS'Y	110-3	STARTER PAWL SPRING
43	CLIP	83-7	START HANDLE	110-4	STARTER PAWL
44	BEARING	83-8	RING		
45	RING	83-9	START RATCHET		

ST20121030-02

Sturm!